

## IP models web interface settings manual



ML-20IP



SL-07IP

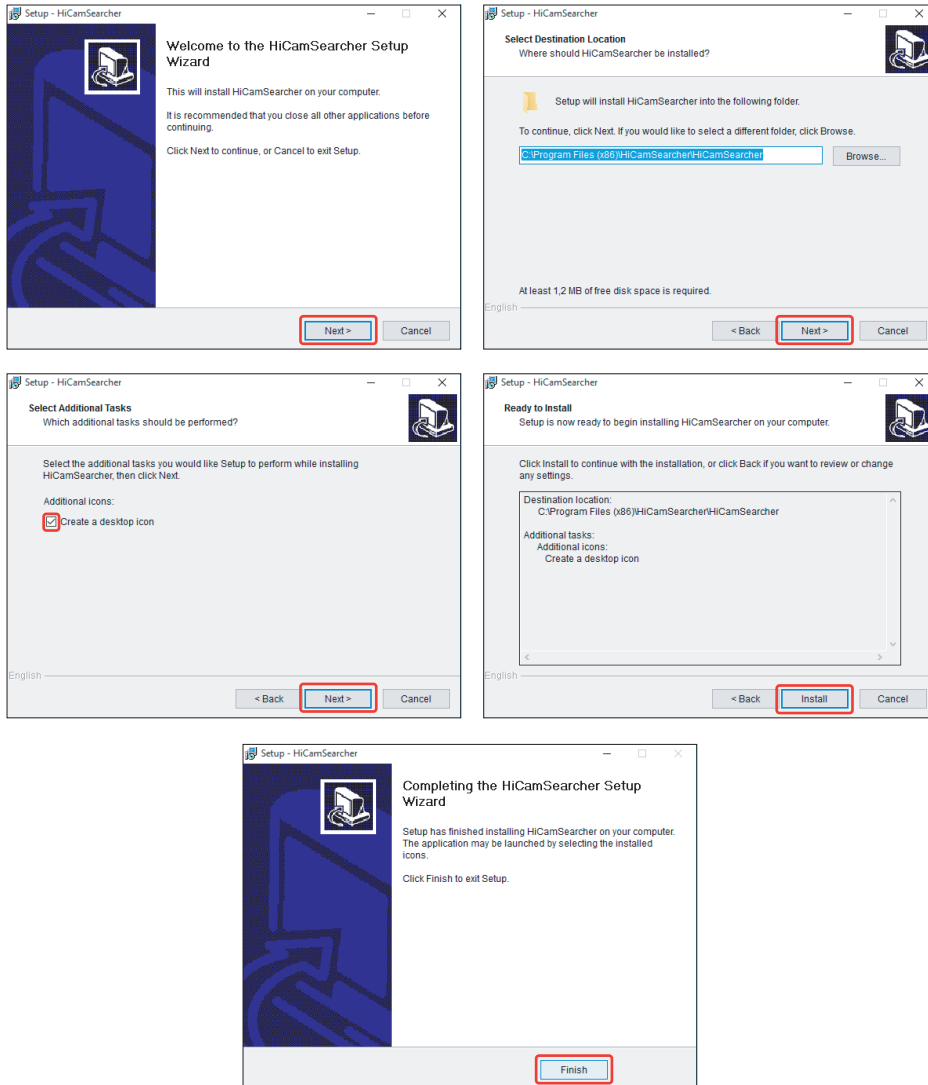


XR-30IP

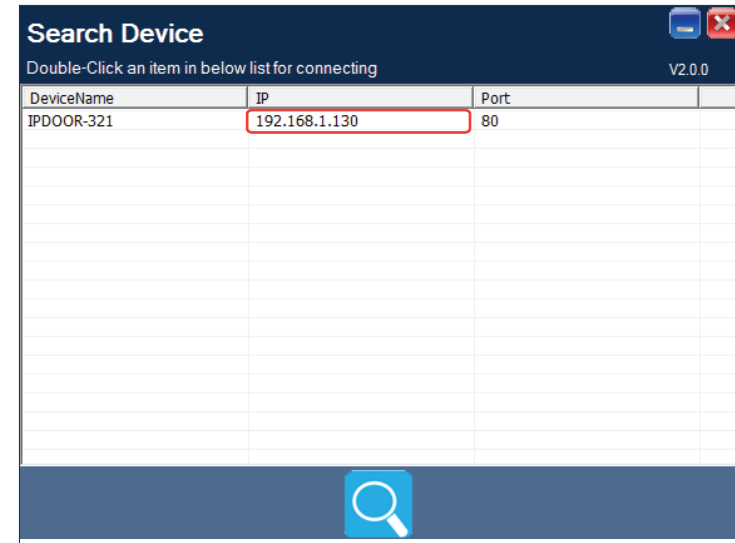
Thank you for the  
choice of our equipment

### 1. PC settings

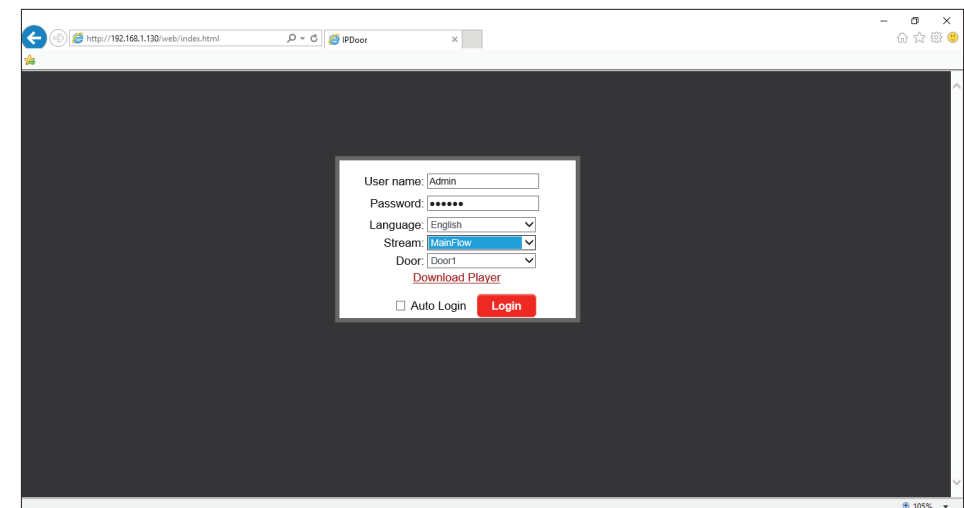
- 1) Connect monitor (door panel) to the local network by wired or wireless (Wi-Fi) connection.
- 2) Open the file «HiCamSearcherSetupV2.0.0.exe» and install the program:



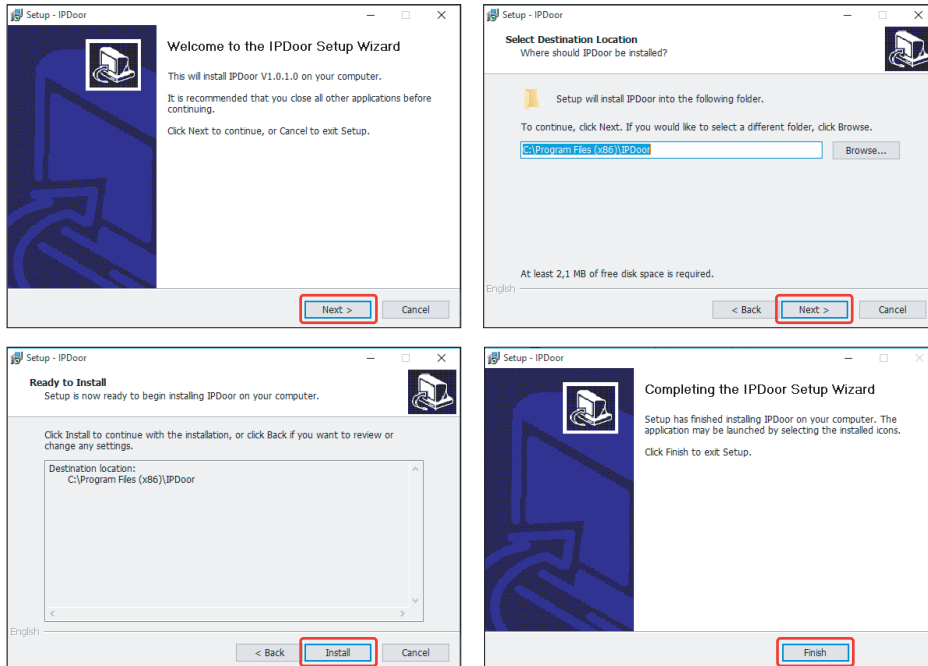
- 3) «HiCamSearcher» shortcut appears on the desktop after program installation. Click it twice to run «HiCamSearcher». Memorize the IP address of the device, to run it directly, by entering it's IP into browser address line later.



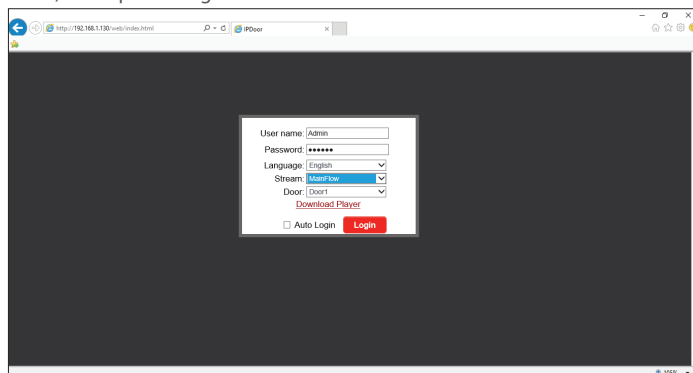
- 4) Click twice on the IP address in «HiCamSearcher» window to go to the web interface access page:



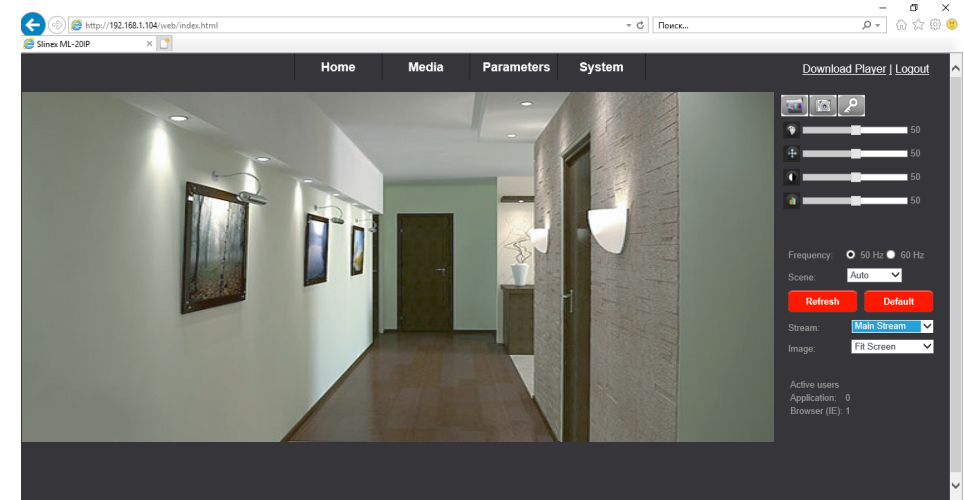
5) If you run web interface for the first time then system will propose you to install the player. Press «OK» button to start installation process then press «Download» button to save the archive and open «IPDoor.exe» file. Then make next steps according screenshots below:



6) Enter user name and password to enter web interface (default User name: **Admin**, Password: **888888**). Choose interface language and stream type (**Main Stream** or **Sub stream**) and also door panel number (**Door 1** or **Door 2**). Then press «Login» button.



7) You will enter main menu if user name and password was correct:





## 2. Device tuning through the web interface

Monitor (door panel) web interface consists of four pages: «Home», «Media», «Parameters», and «System». Press any of it to enter corresponding page.


### 2.1 «Home» page

Press «Home» button to enter real time video and image settings page.

**Image viewing window** – click left mouse button twice on the image to enter full screen mode. Click left mouse button twice again to come back to the Home page.

**Video recording** – press  icon to start video recording. Press  icon again to stop video recording.

**Snapshots recording** – press  icon to make a snapshot.

**Unlock** – press  icon to unlock the door connected to the current door panel. Unlocking window will appear on the screen. Enter unlock password and press «OK» button to unlock the door (default unlock password: 888888).

**Hue** – hue parameter set, from 0 up to 100, default value is 50.



**Brightness** – brightness parameter set, from 0 up to 100, default value is 50.



**Contrast** – contrast parameter set, from 0 up to 100, default value is 50.



**Saturation** – saturation parameter set, from 0 up to 100, default value is 50.



**Powerfreq** – power oscillation frequency, 50 Hz or 60 Hz. Choose the right value for your region.

**Stream** – «Main flow» or «Sub flow» monitoring.

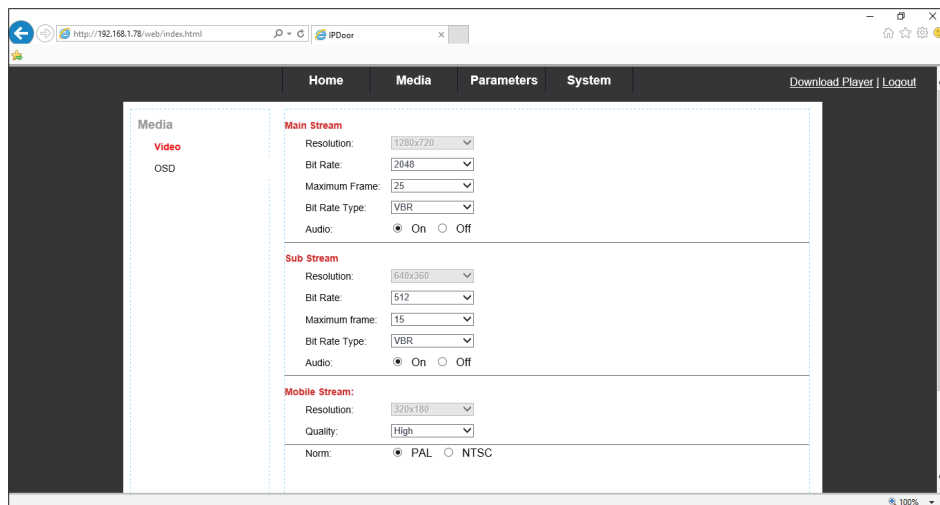
**Door** – «Door 1» or «Door2» monitoring, switch the image source between two doors (available only for the SL-07IP door phone).

**Image** – image size on the monitor screen. «Fit size» (fit the image to the screen size) or «Src size» (original image size received from the device).

## 2.2 «Media» page

Media → Video

Image quality settings for the main and sub stream.



**Resolution** – stream resolution.

**Bit Rate** – compression bit rate.

**Maximum Frame** – maximum frame rate per second.

**Bit Rate Type:** «CBR» – constant bit rate compression or «VBR» – variable bit rate compression.

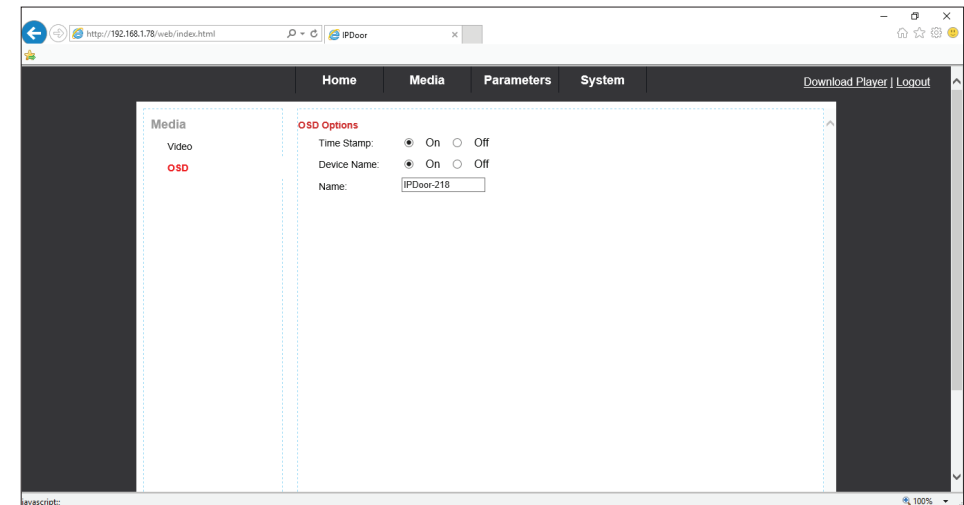
**Audio** – sound transmission «On» or «Off».

**Quality** – image quality for the mobile stream.

**Norm** – image coding system, «PAL» or «NTSC».

Media → OSD

Onscreen labels settings



**Time Stamp** – clock label visibility «On» or «Off».

**Device Name** – device name label visibility «On» or «Off».

**Name** – device name label. Only english letters or numbers are allowed.

## 2.3 «Parameters» page

Parameters → Basic Settings

Local network parameters, HTTP and mobile port number settings.

**IP type** – device IP address receiving type, «Fixed IP Address» or «Dynamic IP Address» setting can be applied. Choose «Fixed IP Address» to enter IP address manually. Choose «Dynamic IP Address» to receive IP address automatically from network device (like router).

**IP address** – device IP address.

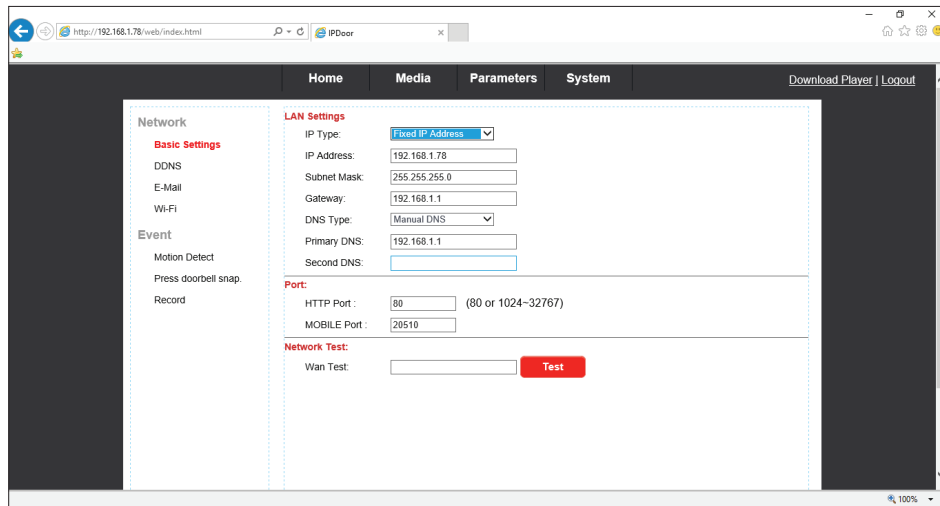
**Subnet mask** – device subnet mask.

**Gateway** – network gateway.

**DNS type** – DNS receiving type, can be «Manual DNS» or «From DHCP server».

**Primary DNS** – primary DNS IP address.

**Second DNS** – secondary DNS IP address.



**HTTP Port** – port number which is used for web interface access. Default HTTP Port number is 80.  
**MOBILE Port** – port number which is used for mobile devices access. Default MOBILE Port number is 20510.  
**WAN test** – enter IP address to check access ability and then press «Test» button. If access granted then «Test Success» message will appear otherwise «Test Failure» occurs.

Parameters → DDNS

Here dynamic DNS settings can be made.

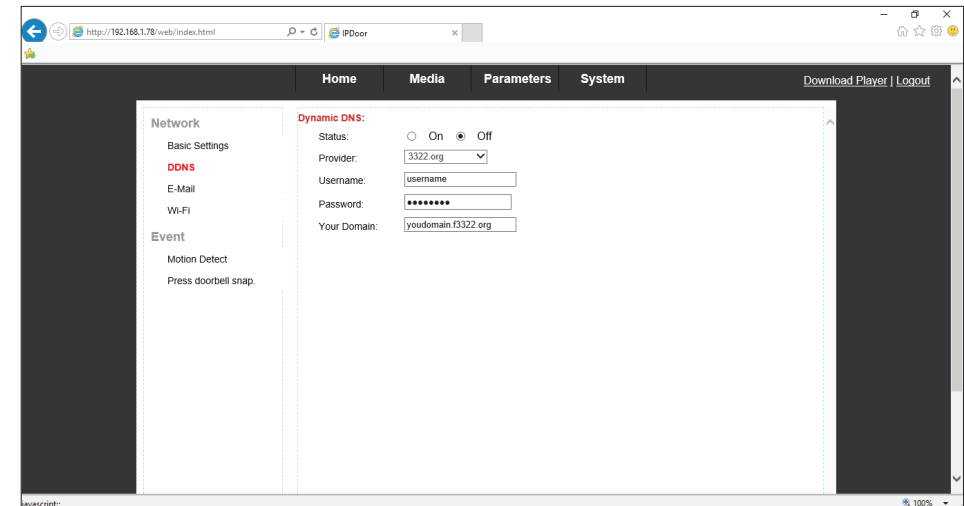
**Status** – «On» or «Off» dynamic DNS function.

**Provider** – two services can be used to receive sub domains: *dyndns.org* or *3322.org*

**User name** – account user name from current provider.

**Password** – account password from current provider.

**Your domain** – domain name approved by provider.

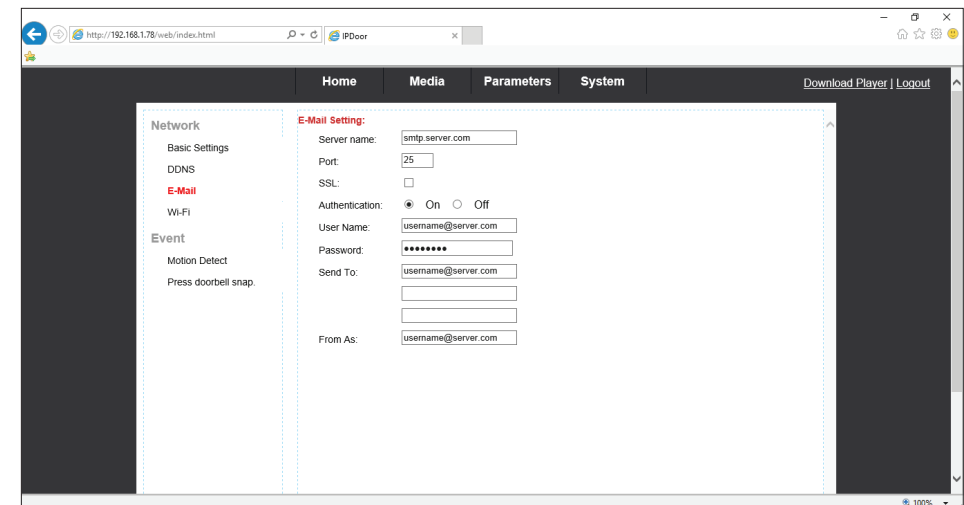


Parameters → E-mail

E-mail settings for alert messages induced by motion detection sensor .

**Server name** – SMTP server name for outgoing messages.

**Port** – current SMTP server port number, 25 by default.



**SSL** – enable or disable SSL encryption.

**Authentication** – enable or disable e-mail server authentication.

**User Name** – account user name on the current server.

**Password** – account password.

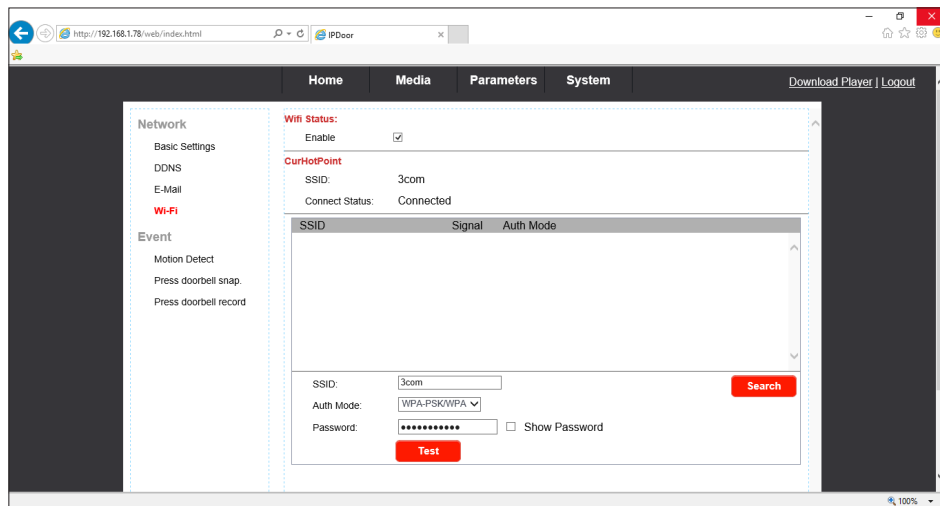
**Send to** – a list of e-mail addresses to send alert messages.

**From as** – sender e-mail address.

#### Parameters → Wi-Fi

Here are wireless Wi-Fi network connection steps:

- 1) Connect your device to the local network by ethernet cable. Then login to the device and go to Parameters → Wi-Fi menu. Choose «Enable» checkbox to activate Wi-Fi module.
- 2) Press «Search» button to start Wi-Fi networks searching,
- 3) Choose the network you want to connect to and click twice on it's name by left mouse button. Network name should consists of numbers or english characters. No special symbols and spaces are allowed.
- 4) Network name will appear in «SSID» box. Choose Wi-Fi network encryption type in «Auth mode» box and enter the password.
- 5) Press «Test» button, to check network connected successfully.
- 6) Press «Apply» button on the bottom side of the screen, logout from the web interface and turn off the device. Disconnect ethernet cable from the device and turn on the device. Now device will be connected to the chosen Wi-Fi network.



#### Parameters → Motion detect

Here are motion detection settings can be made:

**Status** – enable or disable motion detector by the checkbox.

Choose motion detection zones by clicking on squares of the image. Filled squares means that motion detection inside this zone is active. Transparent squares means that no motion detection inside this zone is applied.

**Sensitivity** – choose motion detection sensitivity from «Very High» to «Low»

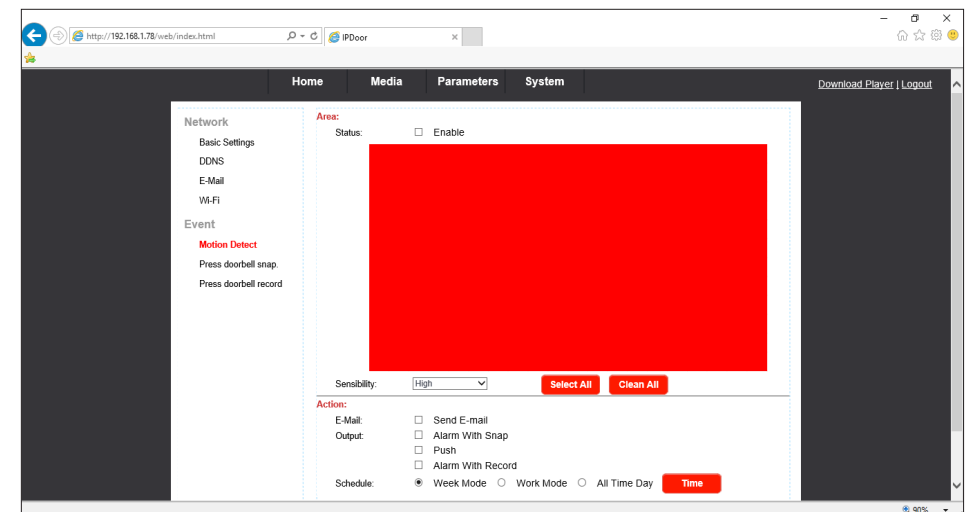
**Send E-mail** – enable or disable e-mail function while motion detection.

**Alarm with snap** – include snapshot to the alarm message.

**Push** – push messages while motion detection.

**Alarm with record** – include video to the alarm message.

**Schedule** – motion detection schedule.



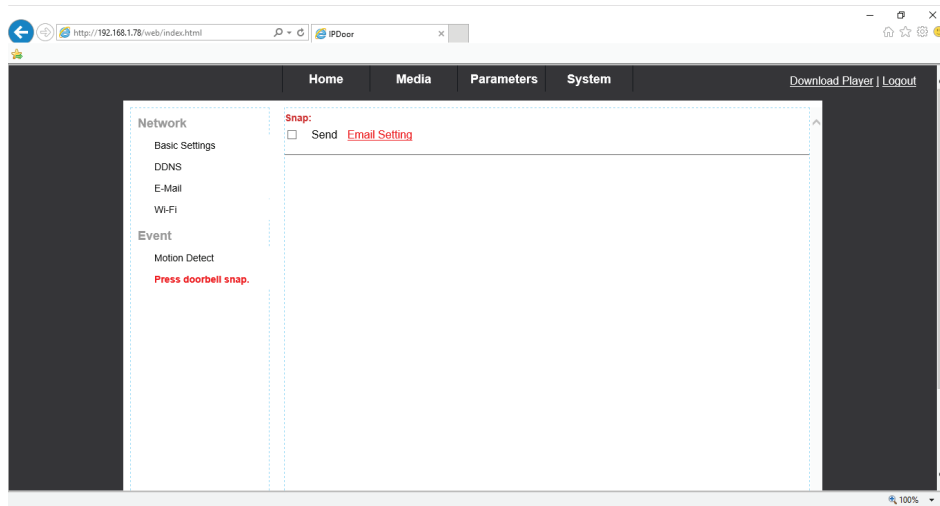
#### Parameters → Press doorbell snap

**Send** – enable or disable e-mail messages while incoming call.

#### Parameters → Record

**Record** – record video while motion detection.

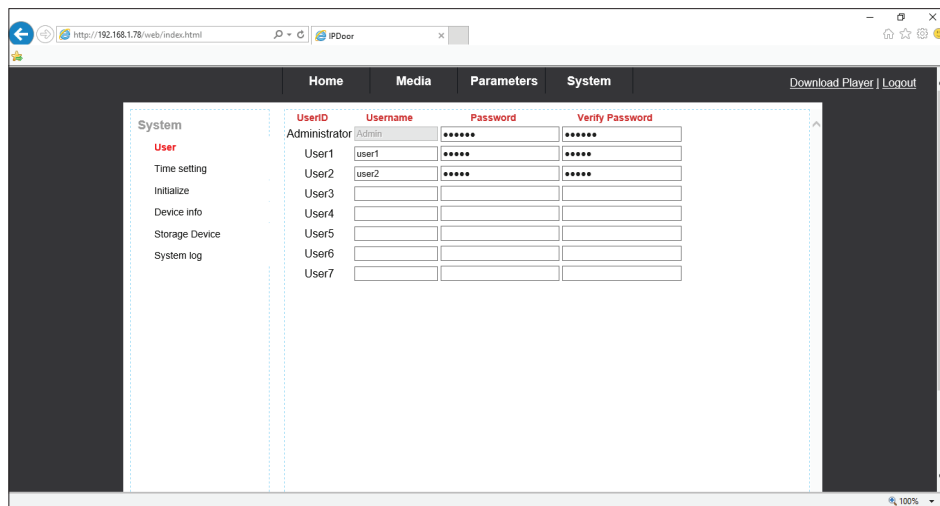
**Snapshot** – take a snapshot while motion detection.



## 2.4 «System» page

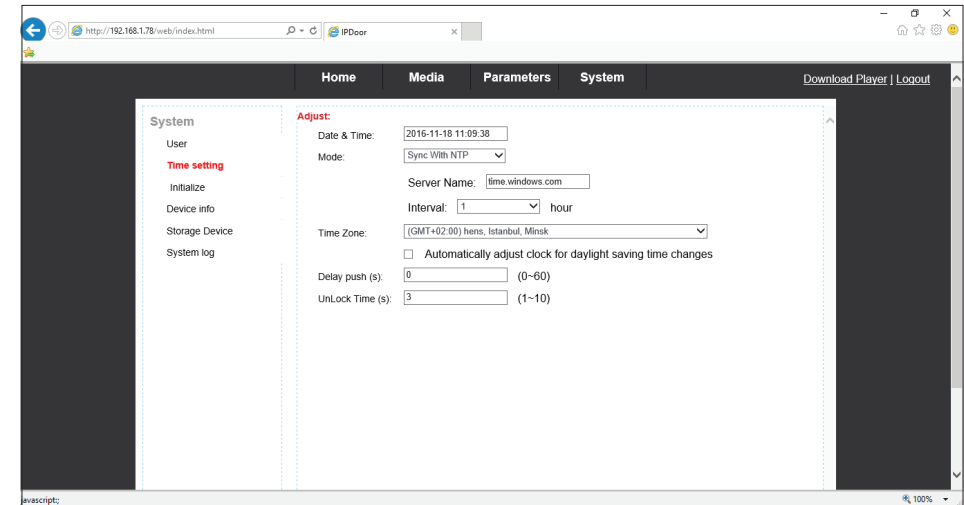
### System → User

Here are account logins and passwords can be added or changed. Default login is «Admin» and password: «888888».



### System → Time setting

System time synchronization settings.



**Date & Time** – current date and time.

**Mode** – date and time synchronization type:

**Keep current** – keep current date and time;

**Manual** – set date and time manually;

**Sync With Computer** – date and time synchronization with PC which is currently connected;

**Sync With NTP** – cdate and time synchronization with NTP server according to the chosen time zone.

**Delay push (s)** – incoming call redirection to mobile device delay in seconds.

**Unlock Time (s)** – relay unlocking time in seconds.

### System → Initialize

Here are device sotware update or restore to the default settings can be made.

**Reboot** – device rebooting.

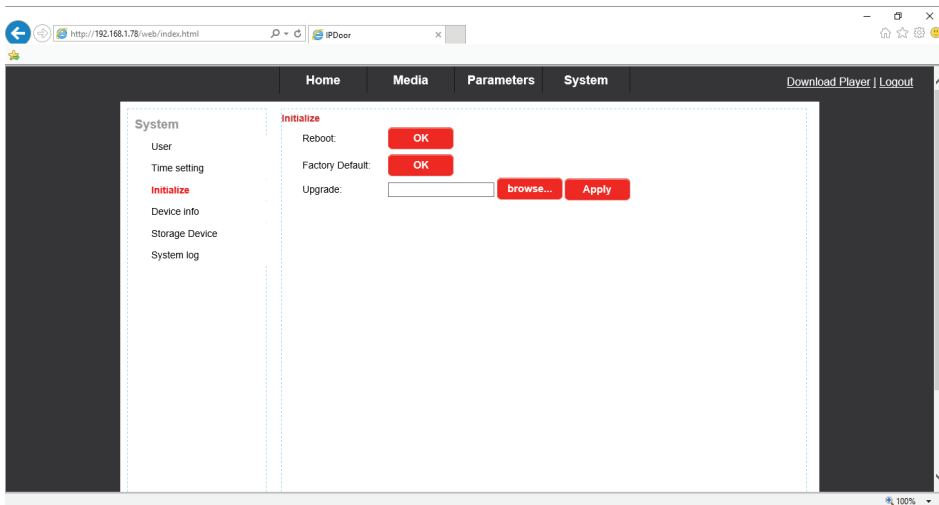
**Factory default** – restore factory default settings.

**Upgrade** – device software update using update file. Press «browse...» to choose update file and press «Apply» button to start software update.



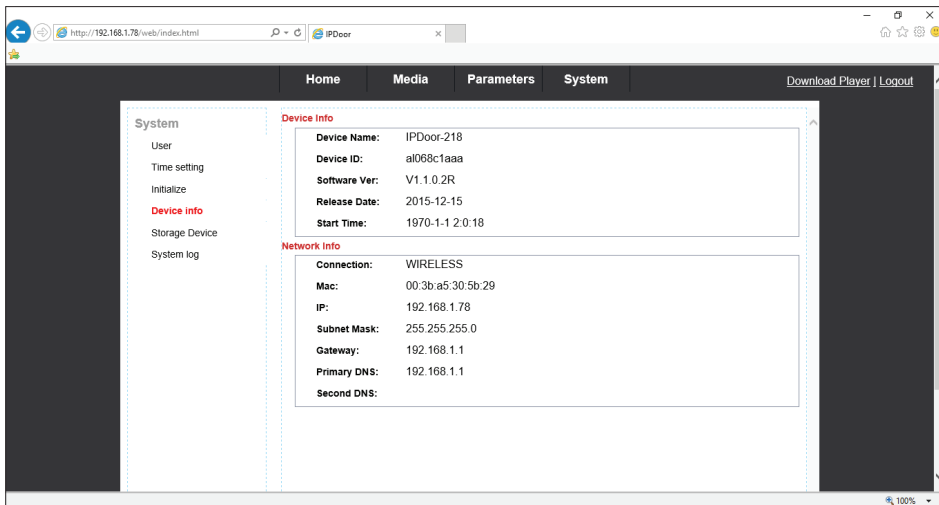
*Don't turn off the device during software update, it can cause damage without possibility to restore functionality in future.*

After software update device will be rebooted. Wait for sound signal which means device is ready.



System → Device info

Here are device name, software release date, device id and IP address parameters can be checked.



System → Storage Device

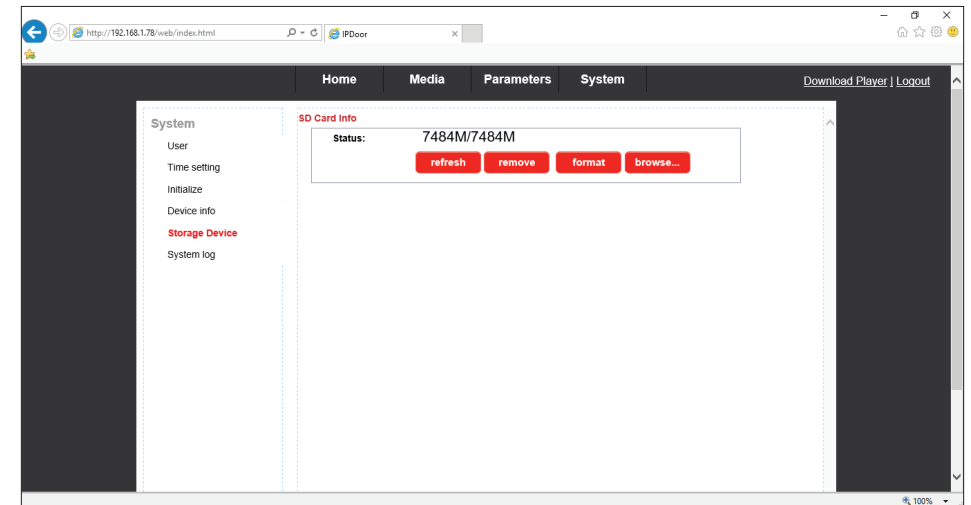
Storage device operations like browsing and formatting storage device can be made here.

**Refresh** – refreshing information about storage device.

**Remove** – safety storage device removing .

**Format** – storage device formatting.

**Browse** – browse files on current device storage. Click any file by left mouse button to view it or click «Parent folder» to come back to previous folder.





System → System log

Events system log can be checked here.

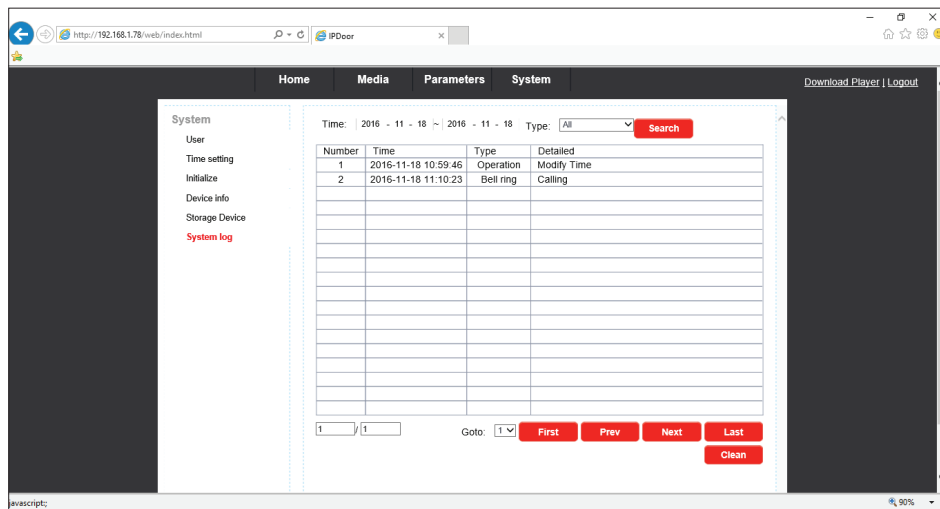
**Time** – system log time filter.

**Type** – evnts type filter:

**All** – displays all events;

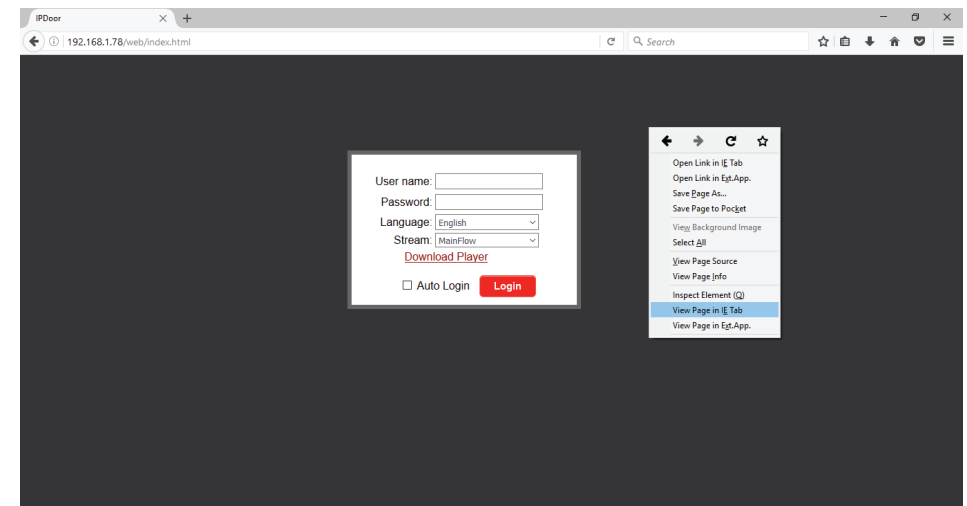
**Operation** – displays only settings events;

**Bell ring** – displays only incoming calls.





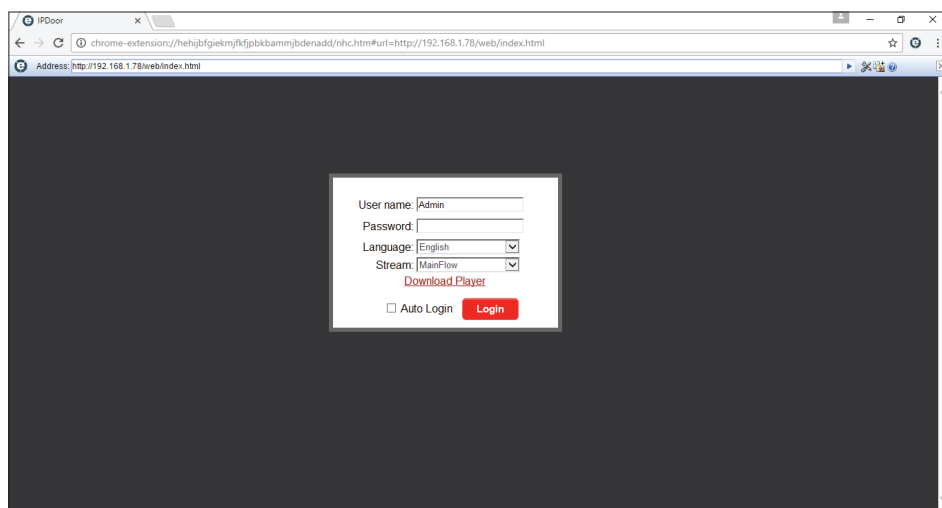
### 3. Device access through the Mozilla Firefox browser

- 1) Install «Mozilla Firefox» browser.
- 2) Start the browser and press Ctrl+Shift+A combination to enter «Add-ons Manager». Then go to «Extensions» bar.
- 3) Enter «ie tab» in the «Search all add-ons» line and install «IE Tab» extension. Then reboot the browser.
- 4) Enter device IP address in the browser address line. Click by the right mouse button on any part of the browser window and choose «View Page in IE Tab» setting after authentication page will be downloaded.
- 5) Authentication page will be downloaded again. Now enter login and password and press «Login» button to enter device web interface.



#### 4. Device access through the Chrome browser

- 1) Install «Google Chrome» browser.
- 2) Start the browser and click  icon in the right upper corner of the screen. Then choose «Settings» → «Extensions» → «Get more extensions».
- 3) Enter «ie tab» text in the search line and press «Add to Chrome» button on «IE Tab» extension.
- 4) Enter device IP address in the browser address line. Click  icon on the right side from the address line.
- 5) Authentication page will be downloaded again. Now enter login and password and press «Login» button to enter device web interface.



#### Table of contents

1. PC settings.....	3
2. Device tuning through the web interface .....	4
2.1 «Home» page.....	4
2.2 «Media» page.....	5
Media → Video.....	5
Media → OSD.....	6
2.3 «Parameters» page.....	6
Parameters → Basic Settings .....	6
Parameters → DDNS.....	7
Parameters → E-mail .....	8
Parameters → Wi-Fi .....	9
Parameters → Motion detect .....	10
Parameters → Press doorbell snap.....	10
Parameters → Record.....	10
2.4 «System» page.....	11
System → User.....	11
System → Time setting .....	12
System → Initialize .....	12
System → Device info .....	13
System → Storage device .....	14
System → System log.....	15
3. Device access through the Mozilla Firefox browser.....	16
4. Device access through the Chrome browser.....	17