

SERIES INNOVATION  
DIRECT

ML-20IP

IP video door station



User manual

Thank you for  
choosing our equipment

**SLINEX** { Design. Uniqueness. Innovations }

### Safety instructions

- Read and keep that manual.
- The device installation process should be carry out by the qualified specialists.
- Use the device from the -40 °C to +50 °C, always keep it within that temperature range.
- Installation surface should be free from vibration and impact influence.
- Keep this device far from open sources of heat, such as radiators, heaters and ovens.
- The device can be installed near other electronic equipment in case if the temperature of the environment does not exceed previously mentioned range.
- The device should be protected from the direct influence of the natural phenomena, such as direct sunlight, rain or snow.
- Don't use aggressive or abradant detergent for the device surface cleaning.
- Use soft wet cloth or tissue to remove strong dirt.
- Don't overpower outlets. It can cause fire or current shock.

### Nature protection



Don't throw away the device with other industrial or nutritive trash if you see that symbol. Some regions have separation and recycling systems for the electronic equipment. Connect with local authorities to receive information about recycling of electronic equipment for your region.

### Rights and limitation of liability

All rights reserved. Any part of that document can not be published in any form, translated to other languages or reproduced in any way including electronic or mechanical.  
Document recording and copying is strictly denied without owner permission.

**Attention!**  
As a result of continuous upgrades and functionality improvements, technical characteristics of the device can be changed without any preliminary declaration.  
This manual can contain some inaccuracy or misprint. The owner reserves the right to make corrections into the information described in the user manual and device package.

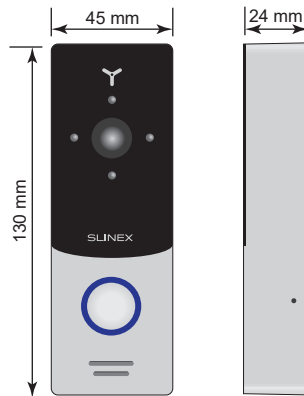
### Table of contents

1. Package .....	3
2. Specification .....	3
3. Description .....	4
4. Installation.....	5
4.1 Cable requirements.....	5
4.2 Schematic diagrams.....	5
4.3 Unit mount .....	7
5. Software.....	8
5.1 Wired network connection steps.....	8
5.2 Wireless Wi-Fi network connection steps.....	10
5.3 Notification messages .....	13
5.4 RTSP support .....	14
6. Limited Warranty.....	16

### 1. Package

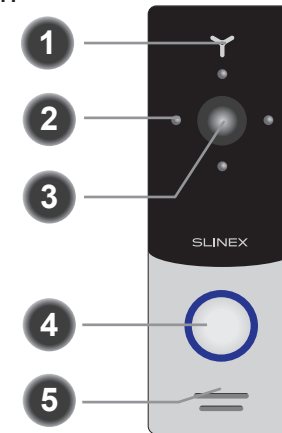
- Video door station ML-20IP – 1 pc.
- Angle bracket – 1 pc.
- Surface mount bracket – 1 pc.
- Rain shield – 1 pc.
- Flush mount bracket – 1 pc.
- Power supply – 1 pc.
- External Wi-Fi antenna – 1pc.
- Mounting screws and nuts – 1 pkg.
- User manual – 1 pc.

### 2. Specification

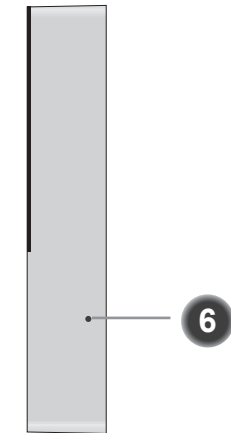


Sensor type	1/4" CMOS with mechanical IR cut filter
Sensor resolution	1,0 Mp
View angle	145°
Backlight type	Infra-red, 1 m. distance
Voltage	+12 V
Lock relay continuous current	1A
Power consumption	Maximum 3 W
Mounting type	Surface or flush mount
Size	45 × 130 × 24 mm
Working temperature	-40 ... +50 °C

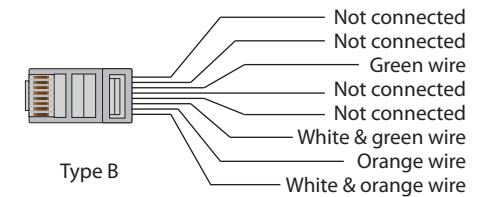
### 3. Description



1	Microphone
2	Infra-red night backlight
3	Video camera
4	Call button
5	Speaker
6	Rain shield mounting hole



Network RJ-45 connector



Connection wires color code for ML-20IP door station

White & green	Network, white & green wire
Green	Network, green wire
White & orange	Network, white & orange wire
Orange	Network, orange wire
Red	Power, +12 V
Black	Ground
Yellow	Video (analog, for the 4-wire monitors)
White	Audio (analog, for the 4-wire monitors)
Brown	2 wires for the lock connection
Grey wire with SMA connector	External Wi-Fi antenna

## 4. Installation

### 4.1 Cable requirements

Disconnect all power cables before device installation.

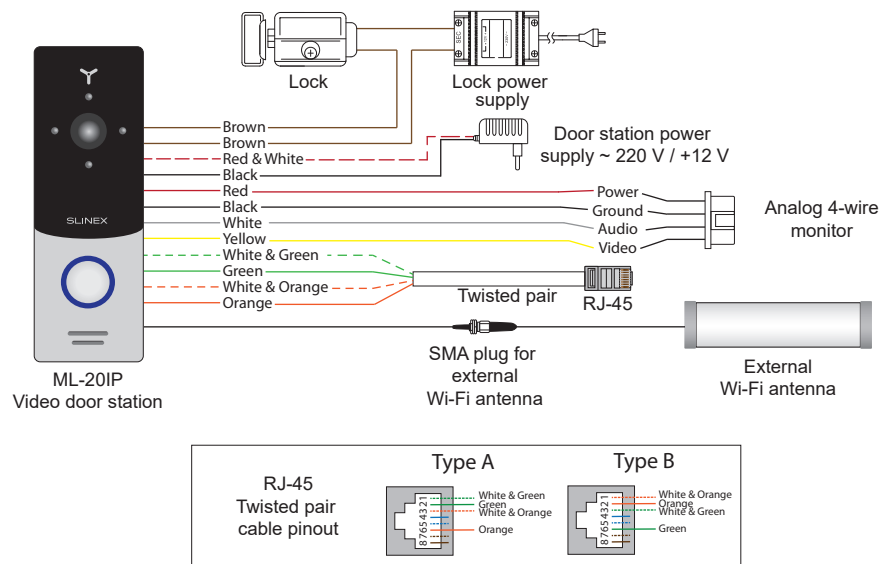
This device can be connected with such cable types:

- Use 2- or 4-wire cable for the video door station power and electronic lock power
  - distance up to 25 meters use a cable with 0,22 mm<sup>2</sup> square of one wire;
  - distance 25 to 50 meters use a cable with 0,41 mm<sup>2</sup> square of one wire;
  - distance 50 to 100 meters use a cable with 0,75 mm<sup>2</sup> square of one wire.
- Local network connection should be made with shielded or non-shielded twisted pair:
  - distance up to 25 meters non-shielded twisted pair can be used;
  - distance 25 to 100 meters shielded twisted pair should be used.

Also wireless Wi-Fi connection can be used for the local network. In that case, there is no need to use twisted pair cable. Instead of twisted pair cable you should use Wi-Fi antenna connected to the SMA plug of the video door station.

### 4.2 Schematic diagrams

Diagram 1. ML-20IP power and lock connection



Note:

Volume setting can be made by the screwdriver inserted into the hole on the back part of the door station. The hole is situated on the bottom part of the back panel and covered by the rubber cap.

Diagram 2. ML-20IP network wired connection by twisted pair cable

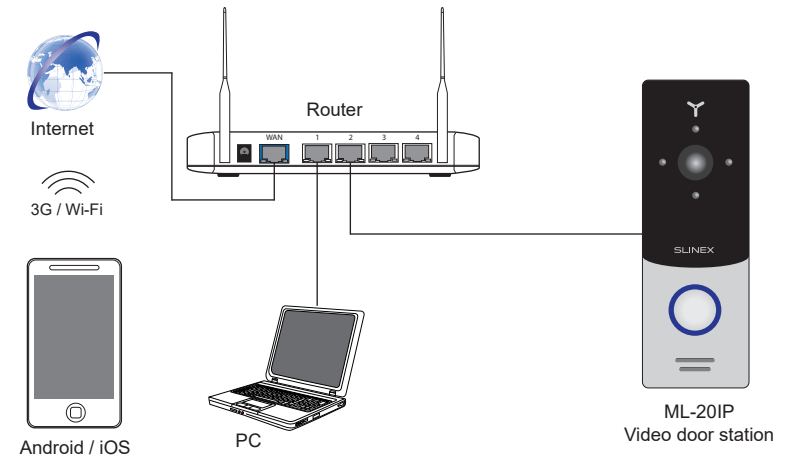
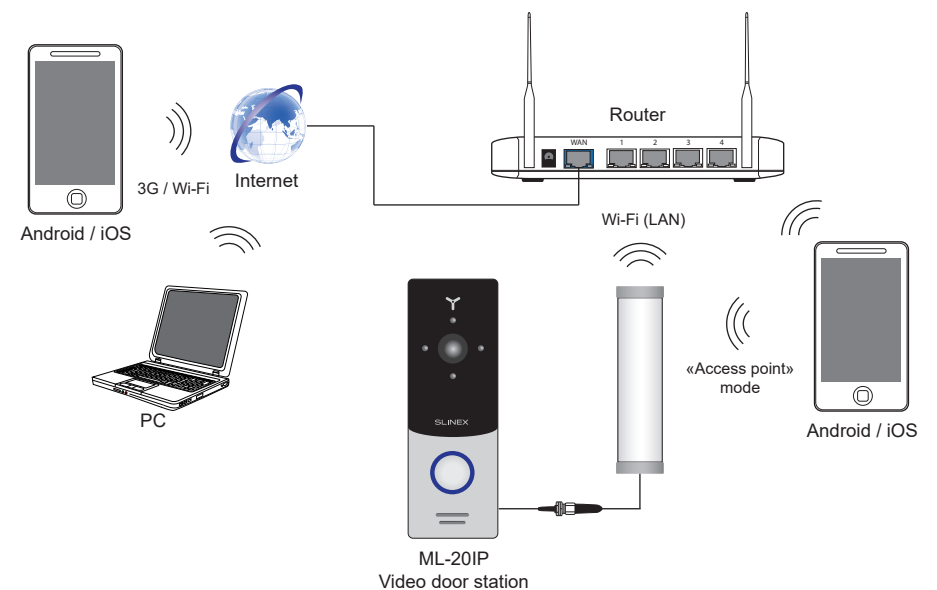


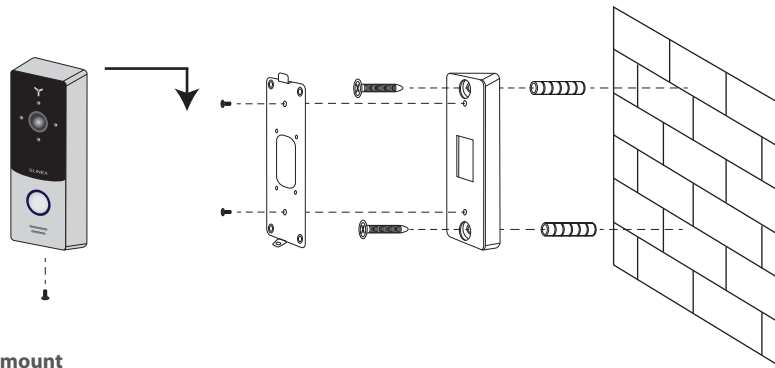
Diagram 3. ML-20IP network wireless Wi-Fi connection



### 4.3 Unit mount

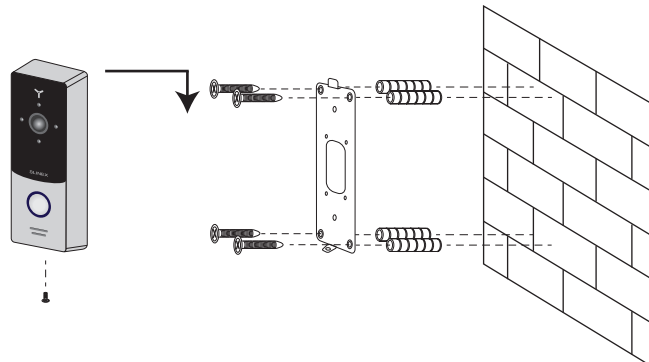
#### Angle bracket mount

- 1) Take the angle bracket from the kit and situate it 150-160 cm from the floor line.
- 2) Mark and drill two halls in the wall.
- 3) Take two nuts from the kit and hammer them into the drilled halls.
- 4) Fix the angle bracket on the wall by the screws from the kit.
- 5) Then fix surface mount bracket over the angle bracket by two bolts from the kit.
- 6) Connect all communication wires and fix the door station on the surface mount bracket by one bolt from the bottom side.



#### Surface mount

- 1) Take the surface mount bracket from the kit and situate it 150-160 cm from the floor line.
- 2) Mark and drill four halls in the wall.
- 3) Take four nuts from the kit and hammer them into the drilled halls.
- 4) Fix surface mount bracket on the wall by four screws from the kit.
- 5) Connect all communication wires and fix the door station on the surface mount bracket by one bolt from the bottom side.




## 5. Software

### 5.1 Wired network connection steps

Use twisted pair CAT5 or CAT6 cable to connect ML-20IP video door station to the local network according to the diagram on page 5.

Wired network setup includes next steps:

- 1) Enter «GooglePlay» (for Android) or «AppStore» (for iOS) and search for «Slinex» application, then install this application on your mobile device.
- 2) Connect mobile device into the local network, which is video door station connected.
- 3) Run «Slinex» application on your mobile device and push  icon to add a new device.
- 4) Push «Click here for connected wired/wireless device» button, then push «LAN search» button.
- 5) When new device have been found, choose its number in the list and fill in the device information:

Name: enter device name in the list

UID: unique identification number of the device

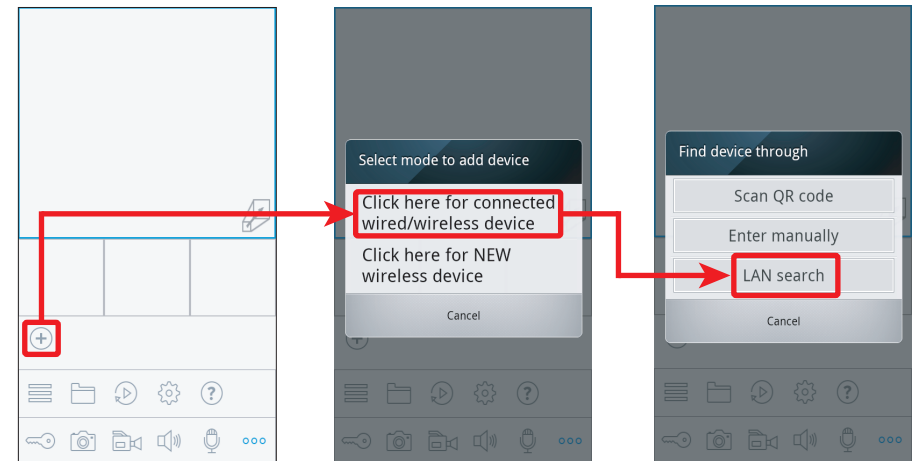
User: **Admin** (by default)

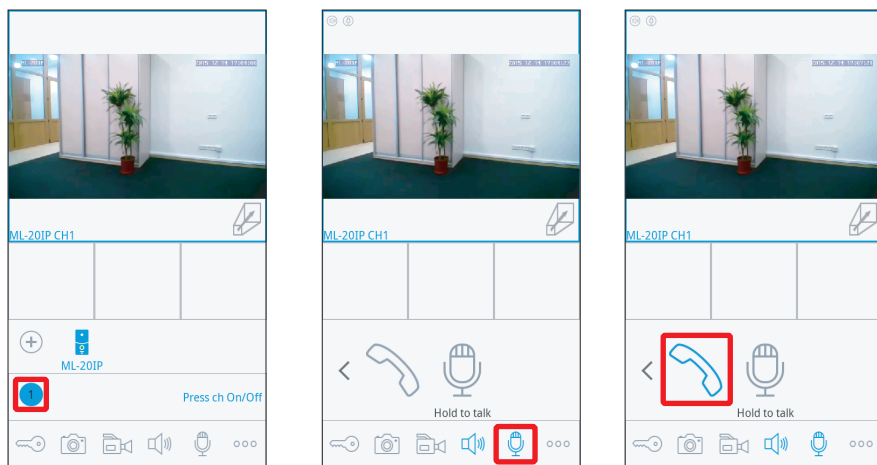
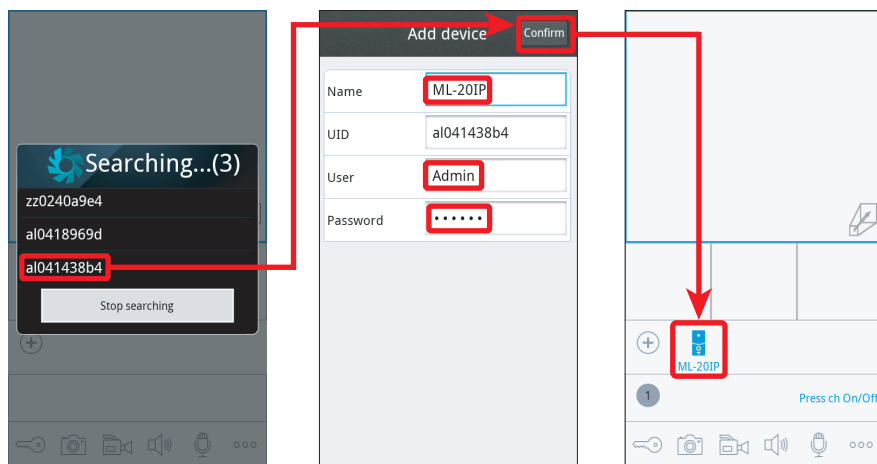
Password: **888888** (by default)

then push «Confirm» button.

6) Device will be added to the bar in the middle part of the screen. You can also push alarm notification on or off by the blue switch in the devices list («Switch ON/OFF notification»).

7) If you want to view the image from the door station press its icon on the bar and then press first channel icon to start monitoring mode. Press first channel icon again to stop monitoring mode.





- add new device
- door unlock
- snapshot
- start/stop video recording
- turn on the sound from the door station
- press again to turn off the sound
- + – start conversation
- press again to stop conversation
- additional settings
- devices list
- local snapshots and video
- remote snapshots and video
- settings
- help

## 5.2 Wireless Wi-Fi network connection steps

Wireless Wi-Fi network connection should be made according to Diagram 3.

Wireless network setup includes next steps:

- 1) Enter «GooglePlay» (for Android) or «AppStore» (for iOS) and search for «Slinex» application, then install this application on your mobile device.
- 2) Run «Slinex» application on your mobile device and push icon to add a new device.
- 3) Push «Click here for NEW wireless device» button.
- 4) Enter into «Access point» mode: push and hold call button until you will hear «beep» sound from the door station then release call button and repeat previous operations two more times. After third «beep» door station will be restarted and then you will hear constant «beeps» sound. It means the door station entered «Access point» mode. Press «NEXT» button on the mobile device screen to go to the next step.
- 5) Wait for a minute while the door station connects your mobile device. On the Android devices the connection will be established automatically. On the iOS device user should connect to the door station manually. Press «Wi-Fi settings» on the iOS device to view networks list. Find the network name with UID number of the door station and connect it. Then press «NEXT» button.
- 6) The list of the available wireless networks will be displayed in the next window. Choose the network which is the outdoor station will be connected and enter the password if it is needed. After that, the door station will be restarted and after a minute it will be connected to the chosen network.
- 7) Press «NEXT» button, to add the door station to the device list. Fill in the device information:

Name: enter device name in the list

UID: unique identification number of the device (don't change this number)

User: **Admin** (by default)

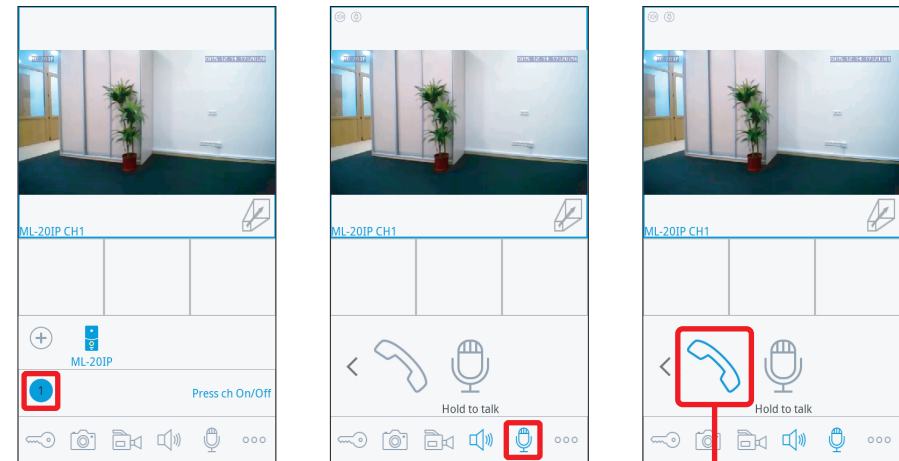
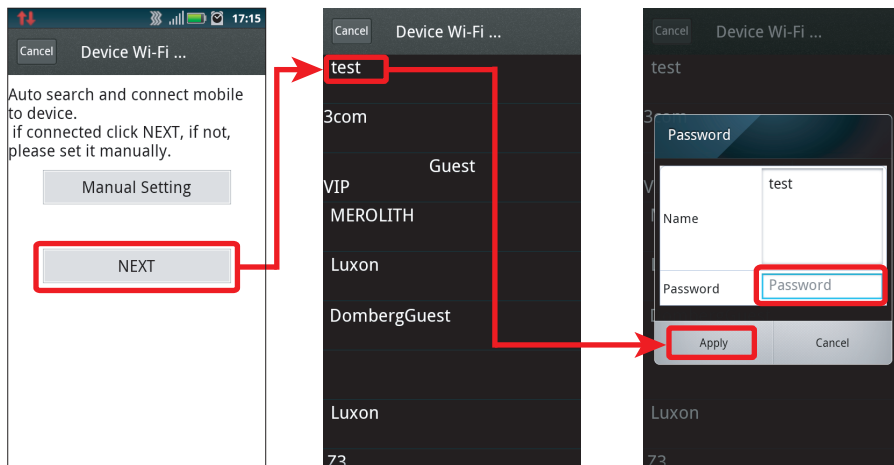
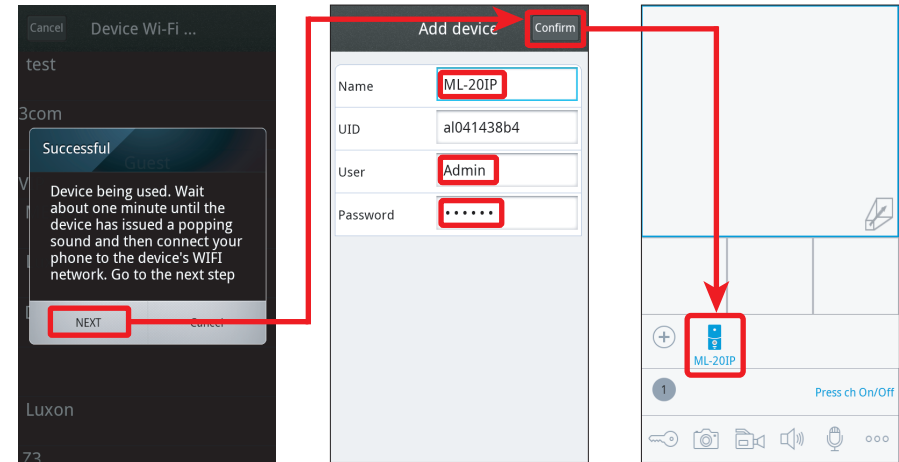
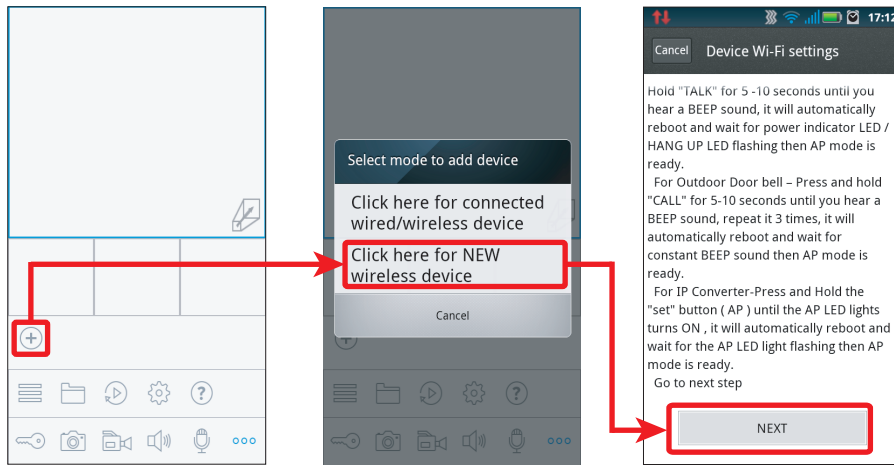
Password: **888888** (by default)

then push «Confirm» button.

- 8) Device will be added to the bar in the middle part of the screen. You can also push alarm notification on or off by the blue switch in the devices list («Switch ON/OFF notification»).
- 9) On the mobile device go to the «Wi-Fi settings» menu and connect the device to the same network as door station was connected in Step 5 if it wasn't reconnected automatically.
- 10) If you want to view the image from the door station press its icon on the bar and then press first channel icon to start monitoring mode. Press first channel icon again to stop monitoring mode.

Note:



*If the door station has been entered into «Access point» mode and wasn't connected to any wireless network during 10 minutes then after that time it will be returned to the working mode.*



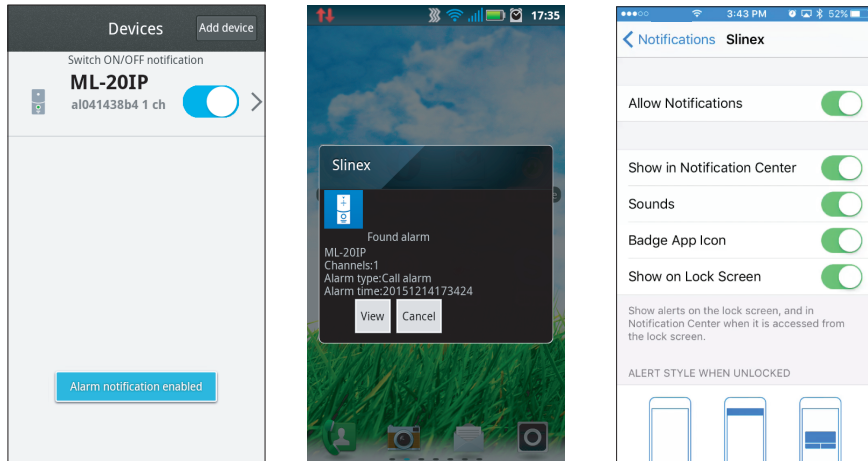
Push to start conversation with the visitor

### 5.3 Notification messages

Check mobile device and door station are connected to the Internet.

Start «Slinex» application on the mobile device and press  button on the bar to display additional settings menu. Then press  button to enter device list. On the right side from the device name you will see the switch. If it has blue color then alarm notification is enabled. If it has gray color then alarm notification is disabled.

While alarm notification is enabled the user will receive the alarm message if someone press the call button on the door station. Press «View» button to talk with the visitor or «Cancel» button to stop alarm message.



Note:

For the iOS mobile devices, go to «Settings» → «Notifications», then click «Slinex» icon and make sure that all the notification are turned on:

- Allow notifications;
- Show in Notification Center;
- Sounds;
- Badge App Icon;
- Show on Lock Screen.

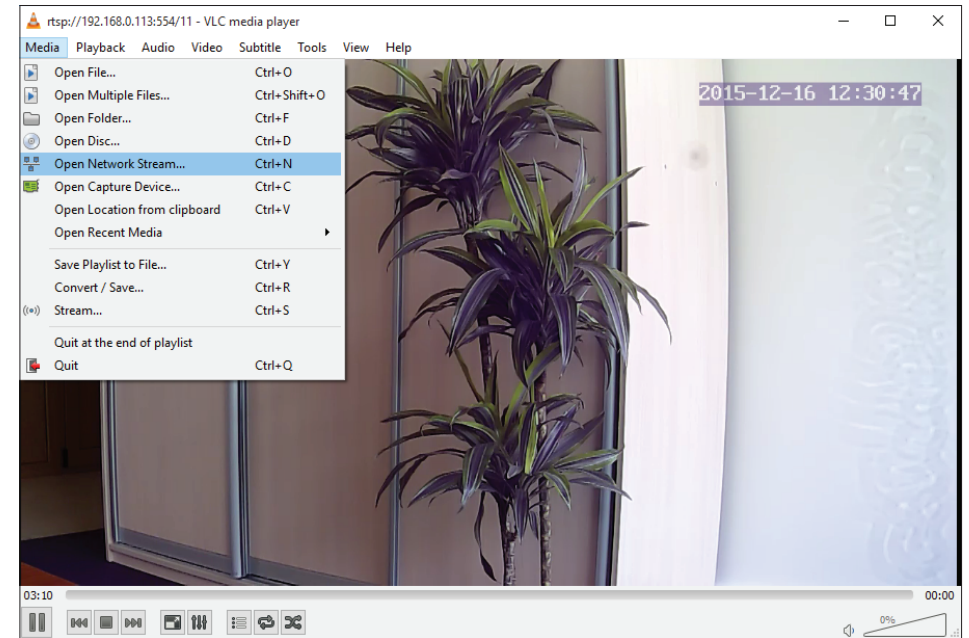
### 5.4 RTSP support.

Thy ML-201P door station supports video streaming through the RTSP (Real Time Streaming Protocol). This function allows us to view or record video on the PC or NVR (Network Video Recorder).

RTSP string format: **rtsp://192.168.0.113:554/11**, where 192.168.0.113 is the IP address of the door station.

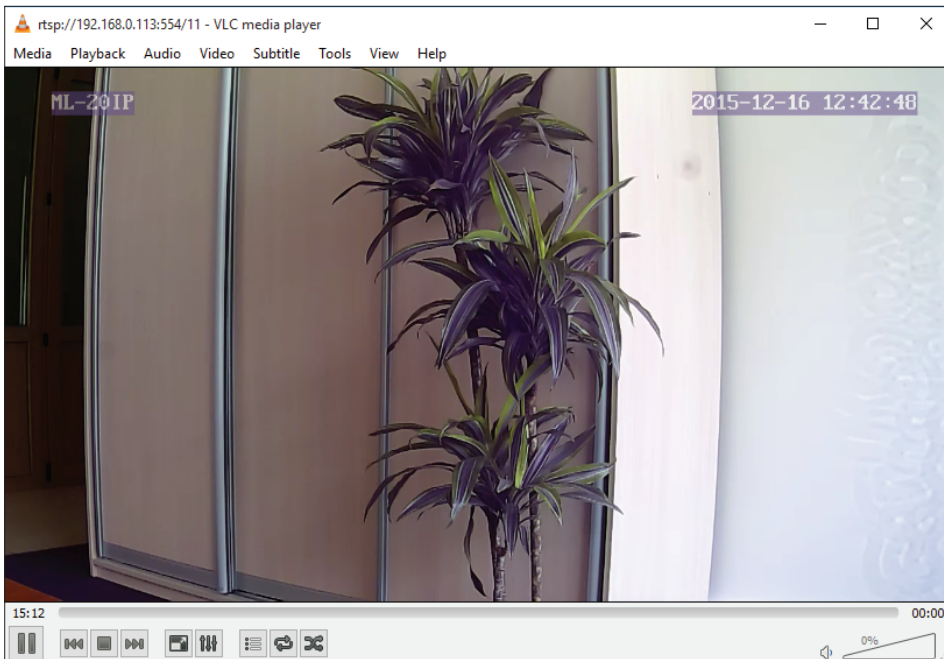
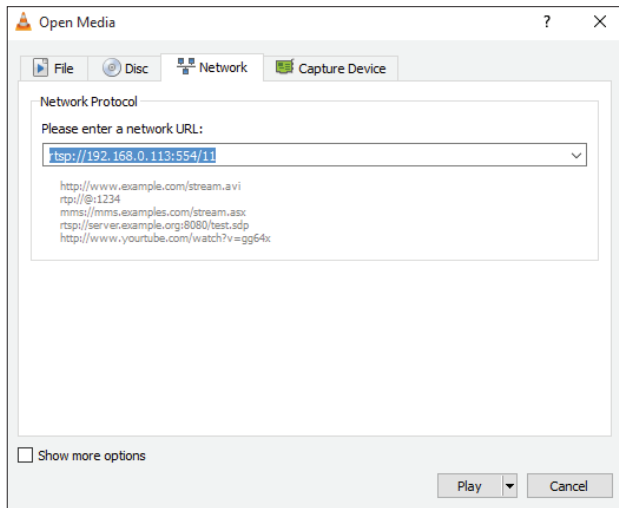
For example, we can view real-time video stream through the VideoLAN (VLC) media player.

Choose «Media» → «Open network stream» or press Ctrl+N combination on the keyboard.



Enter RTSP string in «Please enter a network URL» field. Then press «Play» button to start viewing video stream from the door station.





## 6. Limited warranty

Manufacturer guarantees product normal functioning during the warranty period if the user keeps all safety instructions described in that manual.

Warranty period is 12 months from the moment of the product purchasing (warranty period could be extended up to 24 months or more, depending on the local regulations).

Warranty period allows user to make guarantee repair in cases when normal functioning of the product was violated by the fault of manufacturer and the user haven't offend transporting, instillation and working conditions.

This limited warranty does not cover any damage to the product that results from improper installation, accident, abuse, misuse, natural disaster, insufficient or excessive electrical supply, abnormal mechanical or environmental conditions, or any unauthorized disassembly, repair or modification.

Warranty void in such cases:

- the product was damaged by the fault of the customer;
- the product wasn't properly installed according recommendations from the manual;
- the sticker on the backside of the product was broken;
- the product was not used for its intended function.

This limited warranty covers only repair, replacement, refund or credit for defective products, as provided above. Manufacturer is not liable for, and does not cover under warranty, any damages or losses of any kind whatsoever resulting from loss of, damage to, or corruption of, content or data or any costs associated with determining the source of system problems or removing, servicing or installing products. This warranty excludes third party software, connected equipment or stored data. Manufacturer is therefore not liable for any losses or damage attributable to third party software, connected equipment or stored data.

In the event a product has been discontinued, manufacturer shall either repair the product, offer to replace it with a comparable product or provide a refund at the lesser of the purchase price or the product's current value.

Repaired or replacement products will continue to be covered by this limited warranty for the remainder of the original warranty term.