

Design. Uniqueness. Innovations

Technical support



Thank you for
choosing our equipment

SLINEX

Design. Uniqueness. Innovations

SL-10IPT HD

10" video intercom
with touch screen



User manual

SLINEX

Attention!



As a result of continuous upgrades and functionality improvements, technical characteristics of the device can be changed without any preliminary declaration. This manual can contain some inaccuracy or misprint. The owner reserves the right to make corrections to the information described in the user manual and device package. The last revision of this manual is available on www.slinex.com

Safety instructions

Read and keep that manual.

The device installation process should be carried out by the qualified specialists.

Use the device from -10 °C to +55 °C (+14...+131 °F), always keep it within that temperature range.

Installation surface should be free from vibration and impact influence.

Keep this device far from open sources of heat, such as radiators, heaters, and ovens.

The device can be installed near other electronic equipment in case if the temperature of the environment does not exceed previously mentioned range.

The device should be protected from the direct influence of the natural phenomena, such as direct sunlight, rain or snow.

Don't use aggressive or abradant detergent for the device surface cleaning.

Use soft wet cloth or tissue to remove strong dirt.

Don't overpower outlets. It can cause fire or electric shock.

Nature protection



Don't throw away the device with other industrial or nutritive trash if you see that symbol. Some regions have separation and recycling systems for the electronic equipment. Connect with local authorities to receive information about recycling of electronic equipment for your region.

Rights and limitation of liability

All rights reserved. Any part of that document can not be published in any form, translated into other languages or reproduced in any way including electronic or mechanical.

Document recording and copying is strictly denied without owner permission.

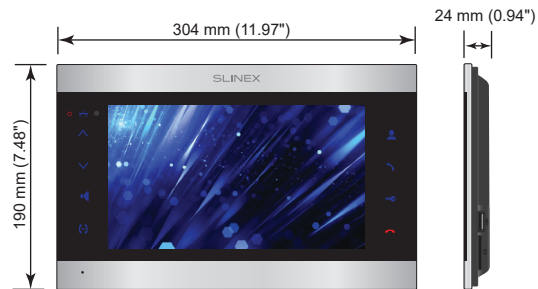
Table of contents

1. Package	3
2. Specification	3
3. Description.....	4
4. Installation.....	5
4.1. Cable requirements	5
4.2. Schematic diagrams	6
4.3. Unit mount	8
5. Operation.....	9
5.1. Incoming call	9
5.2. Outdoor panel and camera monitoring	10
5.3. Incoming call redirection	11
5.4. Intercom	12
6. Settings.....	12
6.1. Mouse and touch screen functions	12
6.2. Tool bar	14
6.2.1. Main settings configuration menu	14
6.2.2. Playback	21
6.2.3. Manual snapshot/video recording	22
6.2.4. Melody volume control	22
6.2.5. Image zooming	22
6.2.6. IP cameras adding	22
6.2.7. Video signal type.....	24
6.2.8. Monitor reboot	24
7. Web browser settings.....	24
7.1. General conditions	24
7.2. Network security settings	25
7.3. Network connection settings	26
7.4. Installing browser plugin	27
7.5. User web interface.....	27
7.5.1. Playback	29
7.5.2. System log.....	31
7.5.3. Device configuration	31
7.5.4. Local configuration	45
8. Mobile application	46
8.1. Creating new account	46
8.2. Network connection steps.....	46
8.3. Operation	48
8.4. Notification messages.....	49
8.5. Sharing with other devices	50
9. Limited warranty.....	51

1. Package

SL-10IPT HD outdoor monitor – 1 pc.
 Wall mounting bracket – 1 pc.
 RJ-45 connector – 1 pc.
 Connection wires – 1 pkg.
 Mounting screws and nuts – 1 pkg.
 User manual – 1 pc.

2. Specification



SCREEN 10" touch screen, color IPS(16:9)	STANDBY MODE POWER CONSUMPTION 14 W
RESOLUTION 1024×600 px.	WORKING MODE POWER CONSUMPTION 21 W
VIDEO SYSTEM AHD 1080p (2 MP), AHD 720p (1 MP), CVBS (PAL or NTSC)	POWER SUPPLY Built-in power supply, ~100–240 V
AUDIO TYPE Half duplex	MOUNTING TYPE Surface mount
CALL DURATION 120 seconds	DIMENSIONS 304×190×24 mm (11.97×7.48×0.94")
MEMORY SD card, up to 256 GB	WORKING TEMPERATURE –10 ... +55 °C (+14...+131 °F)

3. Description



- 1 Display
- 2 Remote control IR receiver
- 3 Network connection indicator
- 4 Power indicator
- 5 «Up» button – increase talking volume, parameter increasing inside settings menu
- 6 Power switch
- 7 «Down» button – decrease talking volume, parameter decreasing inside settings menu
- 8 «Volume» button – enter volume setting
- 9 «Intercom» button – start intercom between monitors
- 10 Microphone
- 11 SD card slot
- 12 «Hang Up» – stop conversation with the visitor
- 13 Mouse USB connector
- 14 «Unlock» button – door unlocking
- 15 «Answer» button – start talking with the visitor
- 16 «Monitor» button – door panel or camera image monitoring

4. Installation

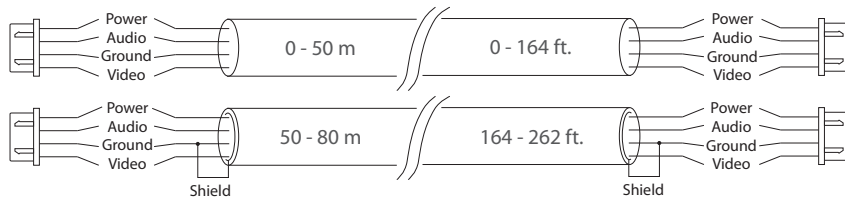
4.1. Cable requirements

Disconnect all power cables before device installation.

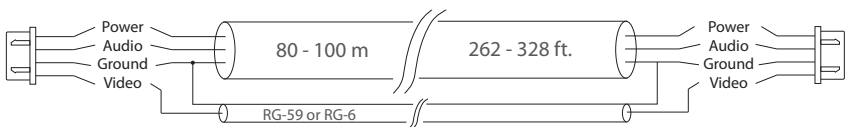
Cable type that is used for device connection depends on the distance between the last indoor monitor in the system and outdoor panel:

a) Use 4-wire cable with such parameters:

- distance up to 25 meters (82 ft.) use a cable with 0,22 mm² square of one wire (AWG 24);
- distance 25 to 50 (82-164 ft.) meters use a cable with 0,41 mm² square of one wire (AWG 21);
- distance 50 to 100 meters (164-328 ft.) use a cable with 0,75 mm² square of one wire (AWG 18).

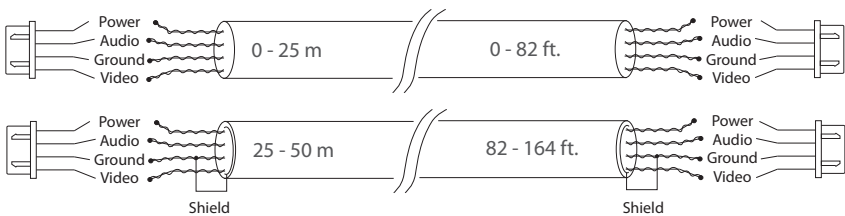


b) If the distance between door monitor and door panel is between 80 and 100 meters (262-328 ft.) then use a 3-wire cable with 0,75 mm² (AWG 18) square of one wire and RG-59 or RG-6 coaxial cable for the video signal.



c) Shielded or non-shielded twisted pair (not recommended):

- distance up to 25 meters (82 ft.) non-shielded twisted pair can be used;



4.2. Schematic diagrams

Diagram 1. SL-10IPT HD, outdoor panels and cameras connection.

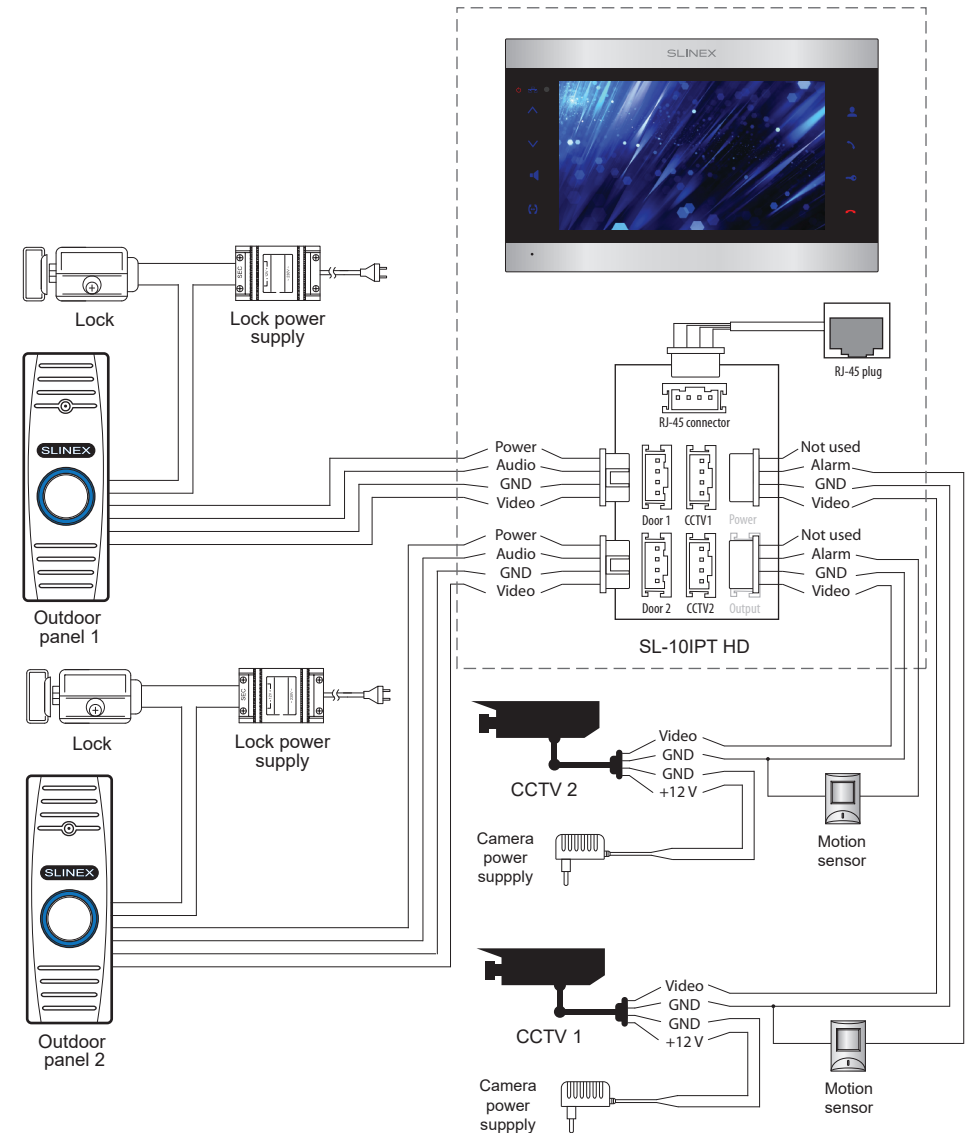
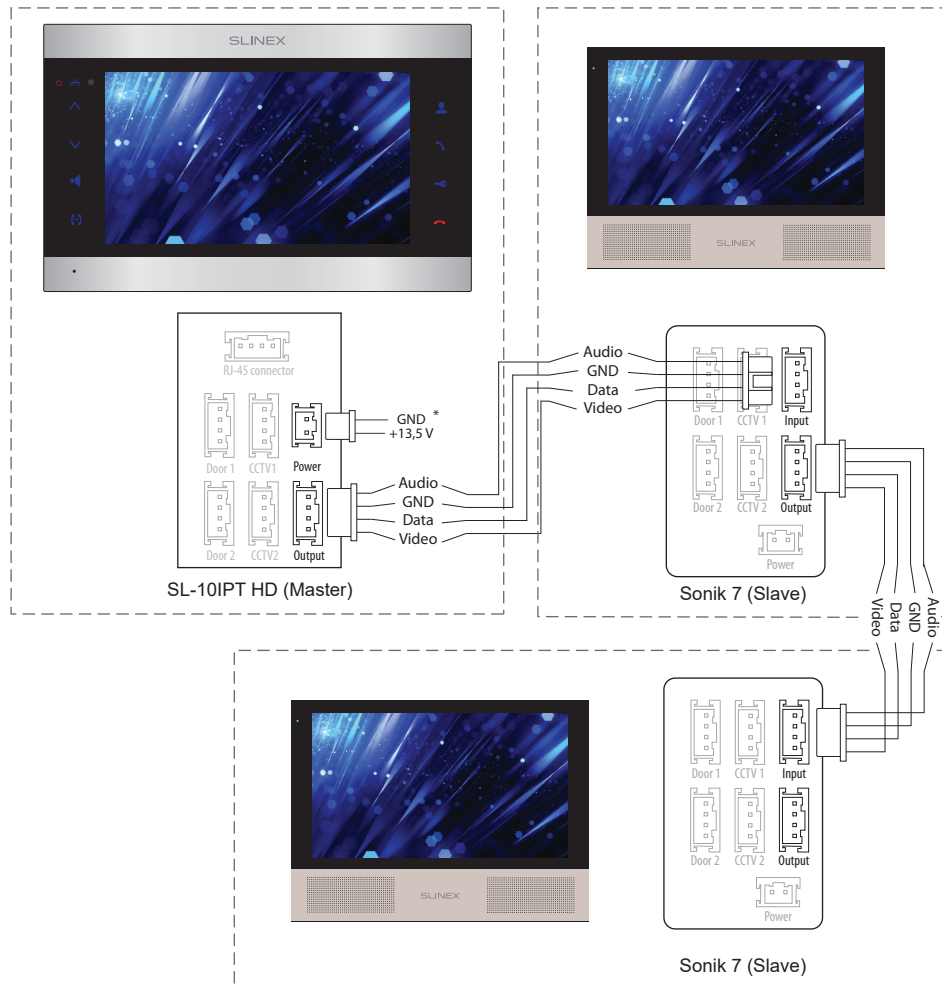


Diagram 2. SL-10IPT HD and Sonik 7 system connection.



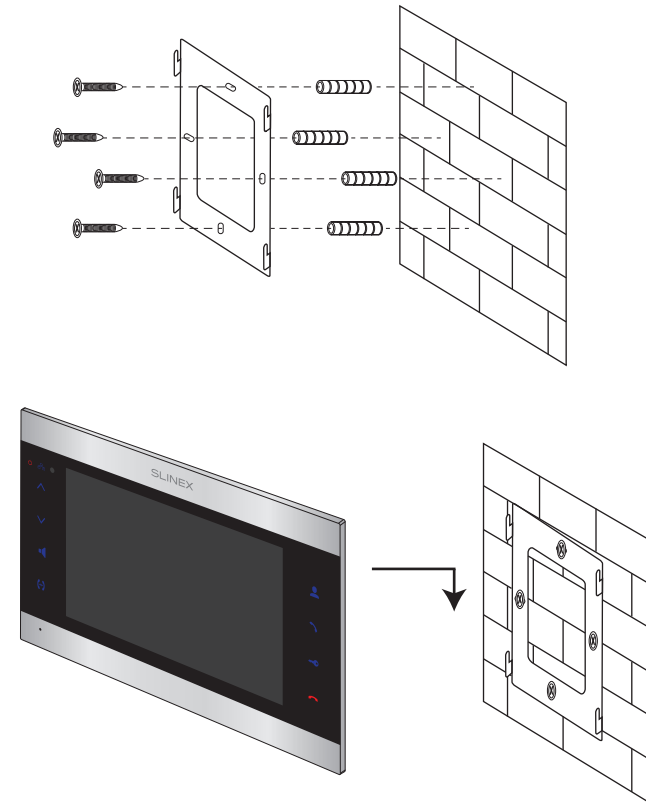
Notes:

* Use «Power» plug to connect external power supply +13,5 V. While use external power supply please keep main power cord ~100-240 V disconnected from the outlet, otherwise it can damage monitor circuits.

** Outdoor panels, cameras, power supplies, locks and motion sensors illustrated on the schemes are optional devices and aren't included into monitors kit.

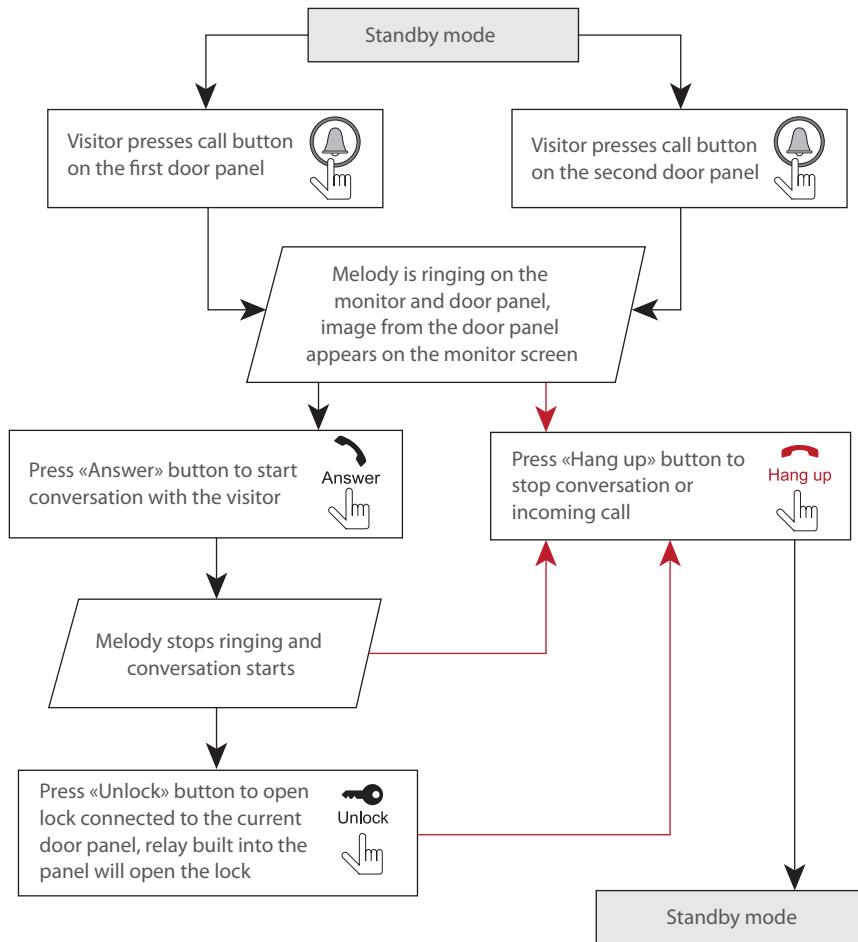
4.3. Unit mount

- 1) Take the surface mount bracket from the kit and place it on 150-160 cm height.
- 2) Mark and drill four holes in the wall.
- 3) Take four anchors from the kit and hammer them into the drilled holes.
- 4) Fix surface mount bracket on the wall with four screws from the kit.
- 5) Connect all communication wires and fix the monitor on the surface mount bracket.



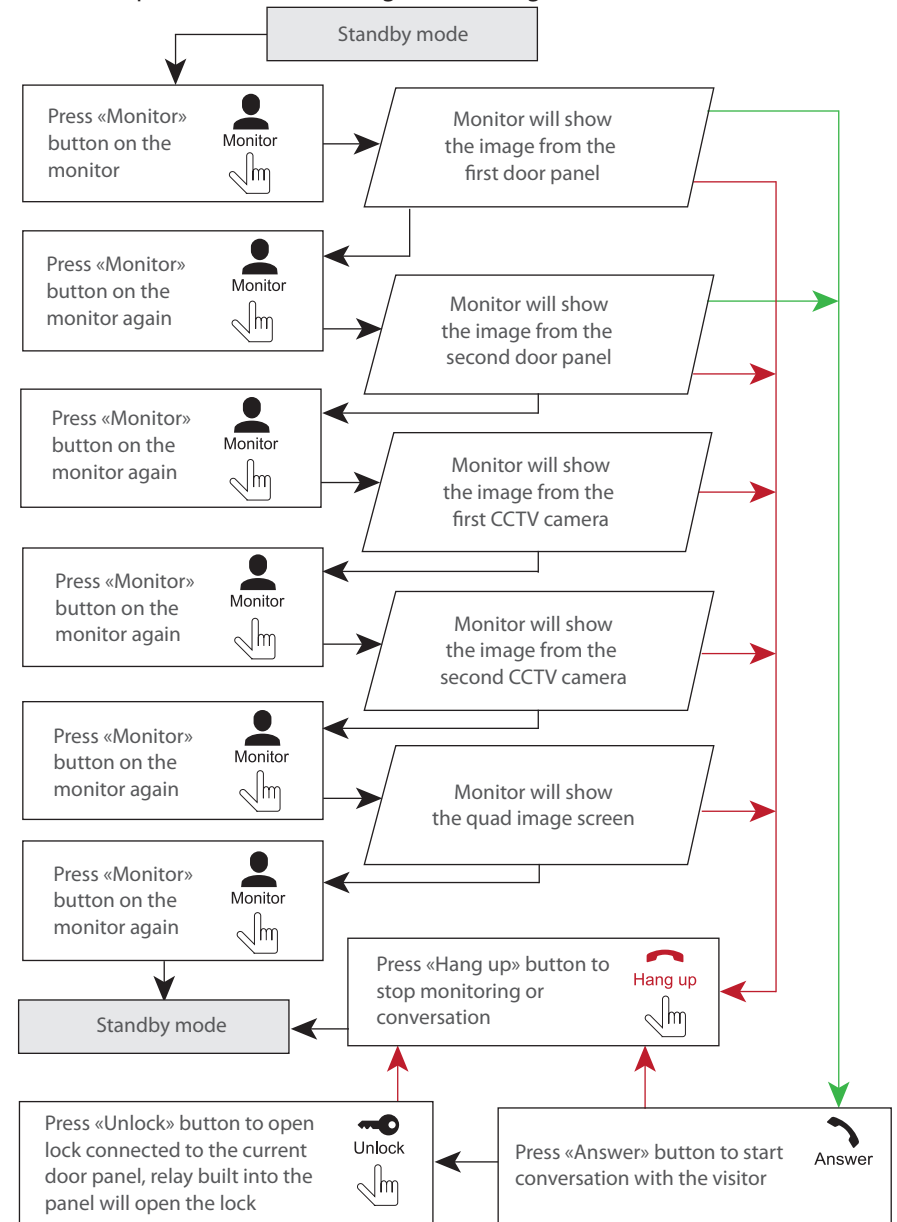
5. Operation

5.1 Incoming call



Note:
Monitor will be automatically switched into standby mode if the user doesn't answer incoming call during 80 seconds.

5.2 Door panel and camera image monitoring

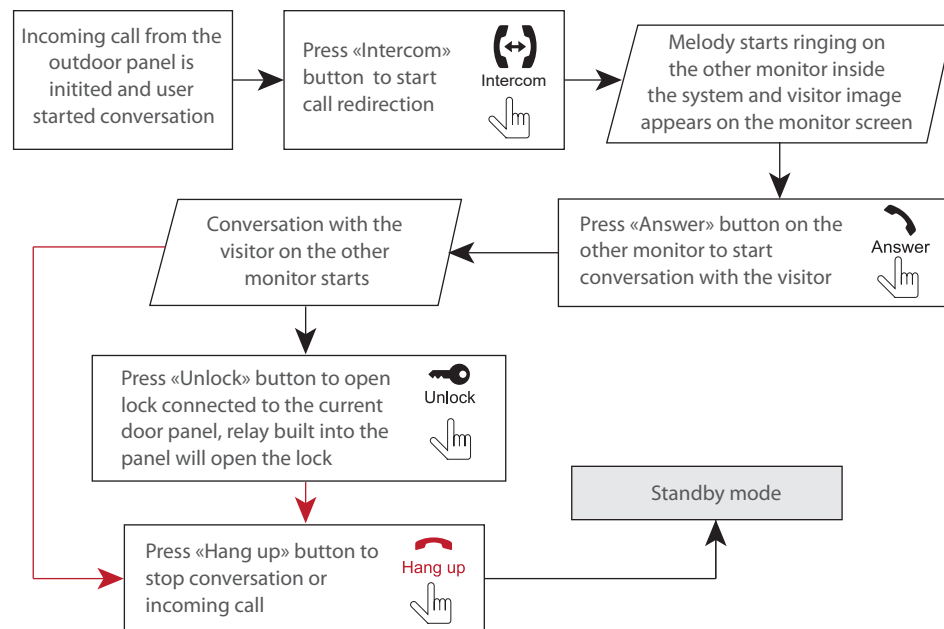


Notes:

- 1) If several monitors are connected into one system, the user can view the image from outdoor panels using any monitor inside this system. The image will be transferred from the «Master» monitor outdoor panels to the «Slave» monitors.
- 2) If someone presses call button on the outdoor panel while monitoring is active then the image from this outdoor panel appears on the monitor screen and call melody starts. Press «Answer» button to start conversation.

5.3 Incoming call redirection

Two monitors connected into one system are used.

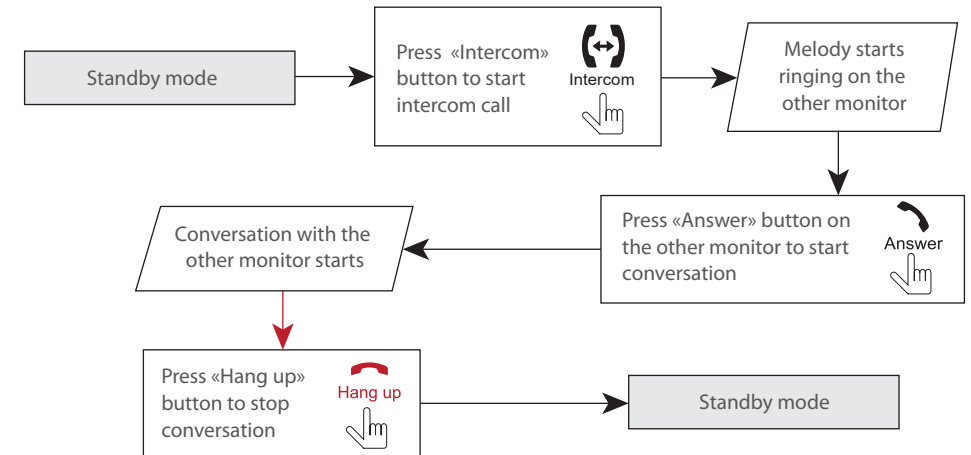


Note:

If incoming call is successfully redirected to the other monitor then current monitor goes into standby mode.

5.4 Intercom

Two monitors connected into one system are used.



Note:



If somebody presses outdoor panel call button while intercom is active then the image from this door panel appears on the monitor screen and call melody starts. Press «Answer» button to start conversation with the visitor.

6. Monitor settings

6.1 Mouse and touch screen functions

User can use a mouse to change monitor settings. Connect the mouse to the USB port situated on the right side of the monitor. Mouse can be connected without monitor power disconnection.

Right mouse button click	<ol style="list-style-type: none"> 1. In standby or monitoring mode click right mouse button to enable or disable instrumental panel. 2. In playback mode click right mouse button to enable or disable playback control panel.
--------------------------	---

Left mouse button click	<ol style="list-style-type: none"> 1. Click left mouse button on  icon on the tool bar to enter main settings configuration menu. 2. In configuration settings menu click left mouse button on any icon to enter current sub menu. 3. Click left mouse button on any parameter to change its value. 4. Click left mouse button on  icon to exit from main settings configuration menu.
Left mouse button double click	Double click left mouse on any part of the image in quad screen mode to enter full screen mode.
Left mouse button hold & slide	Use left mouse button hold & slide in motion detection settings to set motion detected part of the image.

Touch screen function

This model has a touch screen which makes settings changing simpler and quicker.

In standby mode touch any part of the screen to enable quad-screen mode.

In quad-screen mode touch any quarter of the screen twice to view desired video channel.

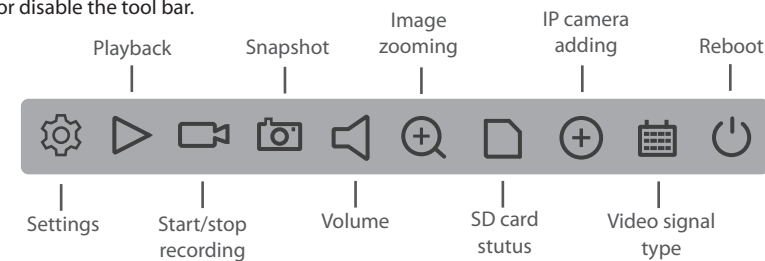
In standby or viewing mode slide any direction by the screen to enable or disable the tool bar.

Press and hold any part of the screen in viewing mode to enable talking volume setting bar.

Press any icon or parameter in settings menu to change its value.

6.2 Tool bar

Click right mouse button in standby or monitoring mode or swipe any direction across the touch screen to enable or disable the tool bar.



Choose image zooming icon on the tool bar then press and hold left mouse button while dragging the part of the image and click left mouse button inside chosen area to enlarge it or simply slide the part of the image using touch screen.

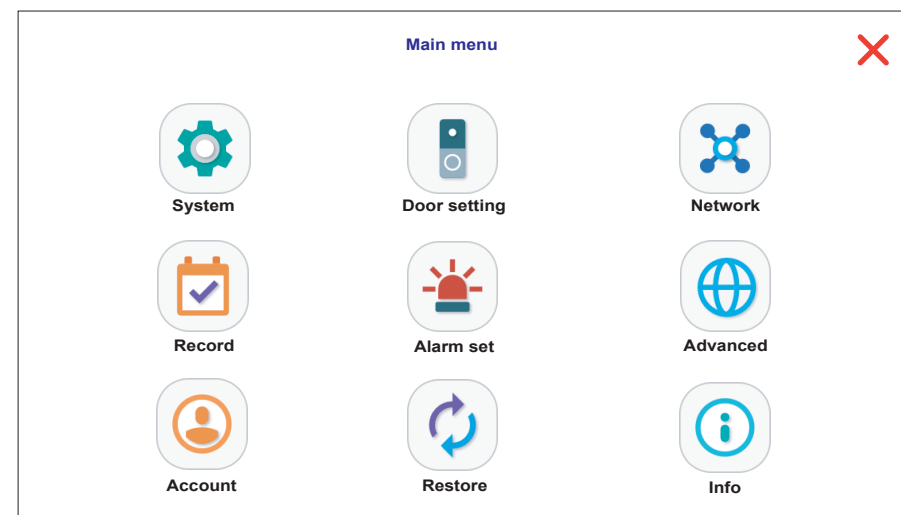
6.2.1 Main settings configuration menu

Press  icon on the tool bar. User authorization menu will appear.

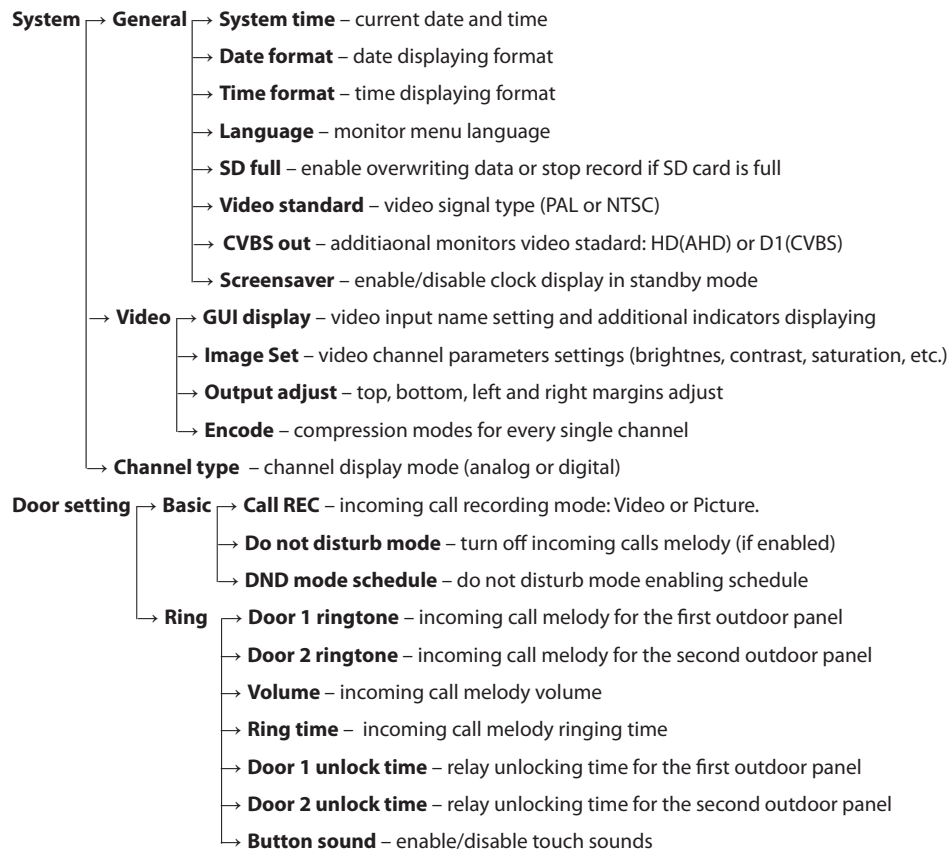
Enter default user name: **admin**

No need to enter password as it is disabled by default.

Press «OK» to enter configuration settings menu:

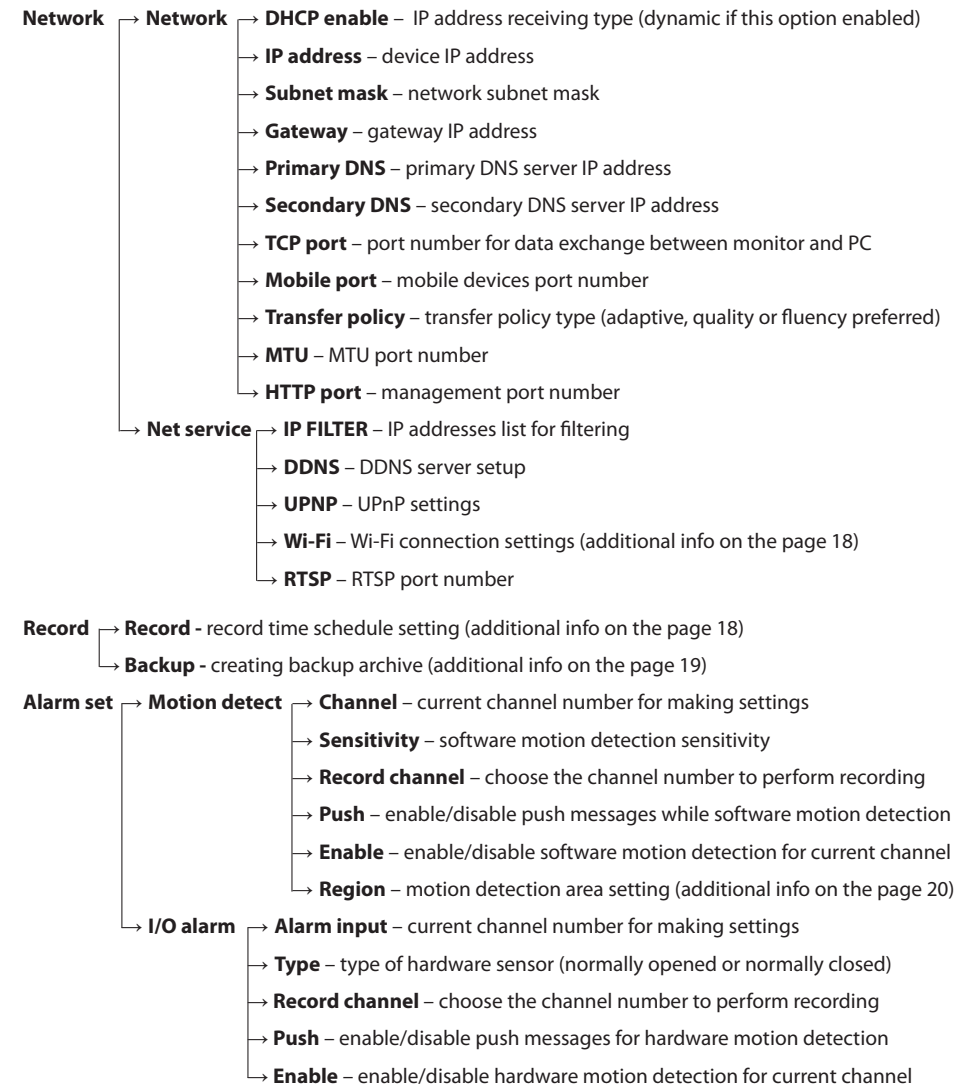


Main menu has following structure:



Note:

* Monitor supports high resolution AHD, TVI and CVI outdoor panels and cameras with actual resolution up to 1080p (2MP). Also two IP cameras can be connected to the Camera 1 and Camera 2 monitor channels. If camera or outdoor panel video standard doesn't suits monitor settings then there is no image on the corresponding video channel.



- Advanced**
- **SD info** – SD card info
 - **SD manage** – format or recover SD card
 - **Upgrade** – copy firmware upgrade file to the USB stick. Insert USB stick into the monitor, choose the folder and an upgrade file. Press «Upgrade» button to start upgrading procedure. Don't remove USB stick and don't turn off the power while upgrading to prevent monitor damaging. System will be restarted automatically when the firmware update is finished.

Account – add or delete user account

Restore – restore default monitor settings according to the list

Info – device information: UID device number, software version and production date

Here is some more detailed info on the following menus:

Settings → System → Video → GUI display

Channel title – choose the name for each of 4 video channels

Time display – enable/disable time OSD

Record status – enable/disable recording indicator

Deflick – enable/disable antivibration indicator

Channel title – enable/disable channel name

Alarm status – enable/disable alarm indicator

Settings → System → Video → Encode

Compression – video codec (only H.264 is available)

Resolution – main and sub stream resolution

Frame rate – from 1 to 25 frames per second can be set

Bit rate type – constant (CBR) or variable (VBR) bit rate can be set

Quality – the lowest, lower, low, high or the highest can be set (option only available if VBR is set)

Bit rate (Kb/s) – stream quality size from 1024 to 8192 Kb/s. (option only available if CBR is set)

I frame interval – from 1 to 20 can be set

Audio – enable/disable audio streaming

Settings → Network → Net service → Wi-Fi

User can connect monitor to the local network in two ways: wired or wireless Wi-Fi connection. We strongly recommend to use wired connection because it is more reliable than wireless one. Enable Wi-Fi module if you would like to use wireless connection. To enable Wi-Fi module double click on «Wi-Fi» sign and then press «Enable» box to make it active.

Press «Search» button to start network searching. Choose the network you would like to connect to and press on its name. Enter the password if your network requires it in the corresponding field and press «OK» button to connect to the current wireless network. The monitor will be rebooted and connected to the network you have chosen.

You can also set Wi-Fi network connection manually by disabling «DHCP enable» option and entering next parameters:

SSID – wireless network name

Password – wireless network password

IP address – device IP address

Subnet mask – network subnet mask

Gateway – gateway IP address

Note that Wi-Fi network name must contain english letters and numbers only (spaces and special symbols are not allowed). Otherwise network registration will not be approved.

Settings → Record

Record schedule can be set up in this menu. There are three recording methods available: constant recording, software motion detection recording and hardware motion detection recording (available only for two additional cameras).

Channel – choose the channel number to make settings

Length – record time length

Mode – schedule recording, manual recording or disable recording. In case of schedule recording you can set up to four time periods for every day of the week

Regular – constant recording according to the schedule setting

Detect – software motion detection recording

Alarm – hardware motion detection recording

Record

Record
Backup

Channel ▾

Length МИН.

Mode Schedule Manual Stop

Week ▾

	Regular	Detect	Alarm
Period 1 <input type="text" value="00 : 00 - 24 : 00"/>	<input checked="" type="checkbox"/>	<input checked="" type="checkbox"/>	<input checked="" type="checkbox"/>
Period 2 <input type="text" value="00 : 00 - 24 : 00"/>	<input type="checkbox"/>	<input type="checkbox"/>	<input type="checkbox"/>
Period 3 <input type="text" value="00 : 00 - 24 : 00"/>	<input type="checkbox"/>	<input type="checkbox"/>	<input type="checkbox"/>
Period 4 <input type="text" value="00 : 00 - 24 : 00"/>	<input type="checkbox"/>	<input type="checkbox"/>	<input type="checkbox"/>

Settings → Record → Backup

Perform next steps to create video archive backup:

- 1) Insert USB stick into the monitor. Choose the new disk in the «Backup» menu list. If there is no disk in the list then press «Detect» button and choose the new disk after detection;
- 2) Press «Backup» button to create a new backup;
- 3) Choose record type, channel number and time interval you want to backup.

Backup

Type ▾ ▾

Channel ▾

Start time

End time

№	Channel	File name	Length
1	<input checked="" type="checkbox"/> 01	2019-11-20/15:41:47-15:41:54[H].h264	92.00KB
2	<input checked="" type="checkbox"/> 01	2019-11-22/17:34:09-17:34:39[H].h264	382.00KB
3	<input checked="" type="checkbox"/> 01	2019-11-26/08:55:47-08:56:13[H].h264	36.00KB

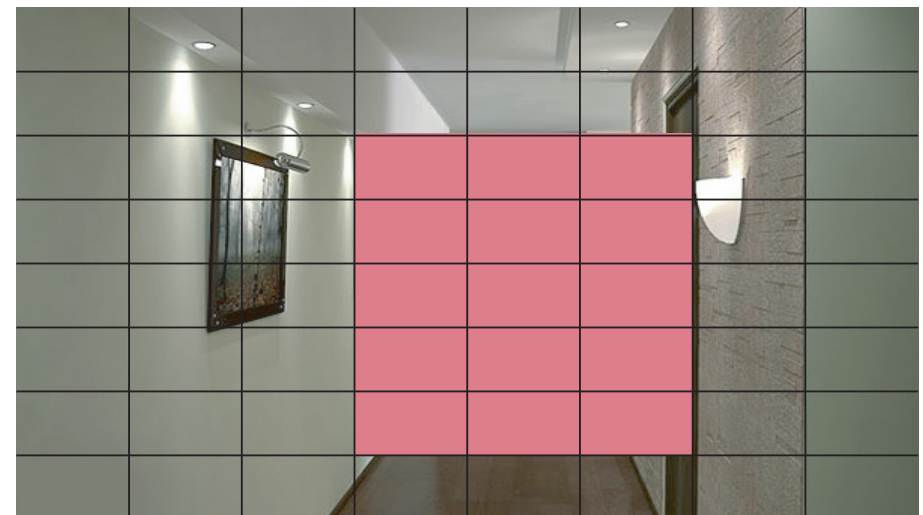
Required / Remaining: 512 KB / 1.72 GB

Backup format ▾


- Press «Add» button to search for corresponding records in the video archive and adding them to the backup list. Press «Remove» button to reset the backup list;
- 4) Mark the records in the list to add them into the backup file;
 - 5) Choose «Backup format» on the bottom of the backup screen;
 - 6) Press «Start» button to create backup or press «Cancel» button to exit backup menu.

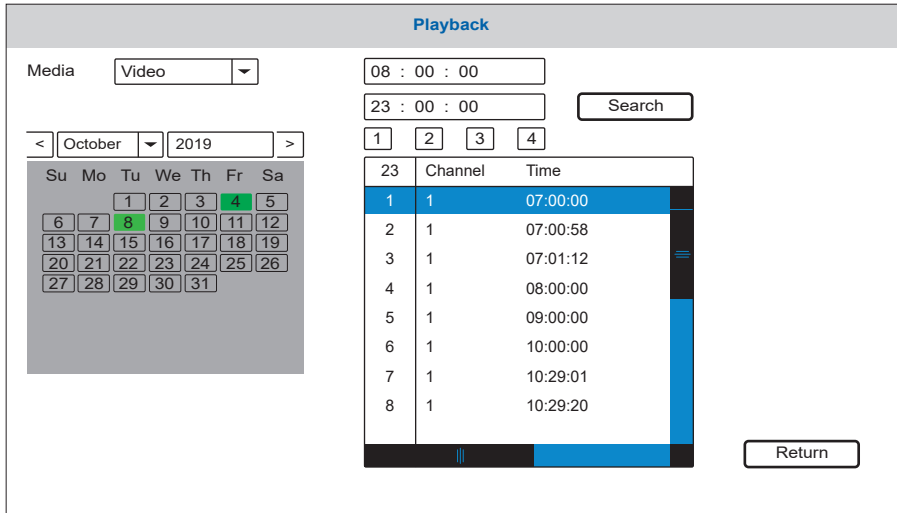
Settings → Alarm → Region (Set)

Sometimes software motion detection needs to be performed not by the whole image, but only in the certain area of the frame. During such detection all the motion outside of the defined area will be ignored. Software motion detection area can be set in this menu. Press any part of the screen and drag it to the diagonal angle of the defining area. Also you can change the status of each small rectangle by pressing on it. Press and hold any part of the screen for several seconds to save and exit motion detection area setting. Motion detection is active in rose zone of the screen (motion detection performed by the whole image by default). If some area has transparent color then it means that software motion detection is disabled inside this zone. For example motion detection area set active in the middle of the frame (rose zone) and disabled on the sides of the frame (transparent zone) on the next picture:



6.2.2. Playback

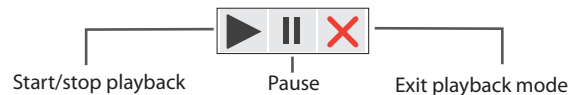
Swipe any direction across the screen to enable the tool bar, then press  icon to enter playback



Choose file type to search for (Picture or Video), month and year and time period. Mark channel number and press «Search» button to display corresponding video records or pictures. Days that have any records marked green in the calendar. Press any day in the calendar to display corresponding records. «Channel» column in the list indicates the channel from which the record was performed. «Time» and «Size» columns shows record starting time and file size.

Double click any file from the list to enter playback mode. It will be displayed in a full screen mode.



Following toolbar is used to control playback:




6.2.3. Manual snapshot/video recording


There two types of recording in the monitor – manual recording or schedule-based recording (including motion detection). Manual recording has more priority than schedule-based recording. In case manual recording has been initiated, schedule-based recording is paused until manual recording ends.

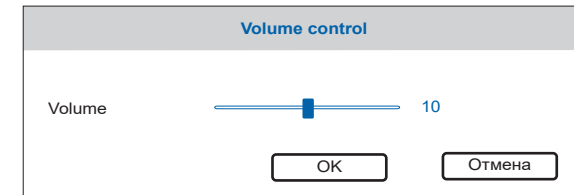
Schedule-based recording is described on the 18-20th pages of that manual.

Swipe any direction across the screen to enable the toolbar, then press  button to start manual recording. Press  button again to stop manual recording. In quad mode you can enable/disable recording only for the channel, from which tool bar was activated.


The same way you can make a snapshot by pressing  icon on the tool bar.

6.2.4. Melody volume control

Swipe any direction across the screen to enable the tool bar and press  icon to enter melody volume control setting. Choose desired volume and press «OK» button to save settings or «Cancel» button to discard changes.




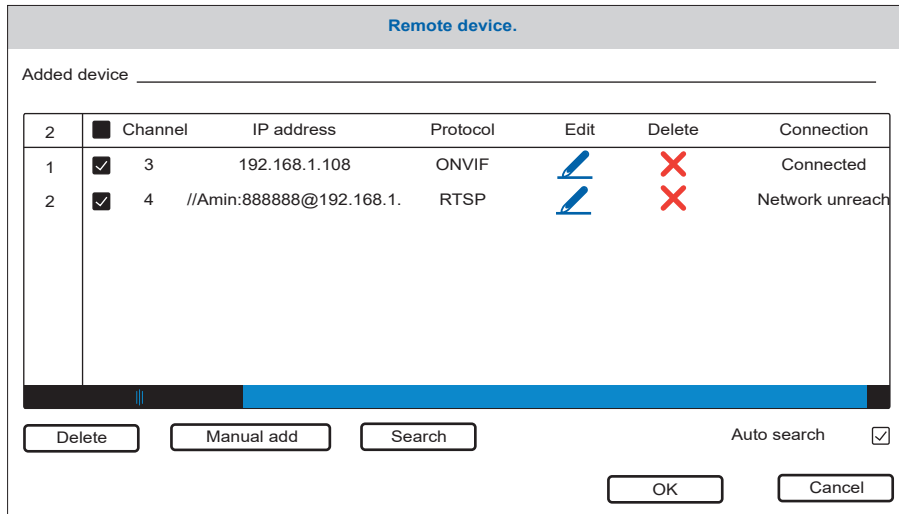
6.2.5. Image zooming

Swipe any direction across the screen to enable the tool bar and press  icon to activate zooming mode. Hold and drag any part of the screen to mark zooming area. In zooming mode double click any part of the screen to come back to the full screen mode.

6.2.6. IP cameras adding

Two IP camera streams can be displayed on this monitor. To enable that function following steps must be performed:

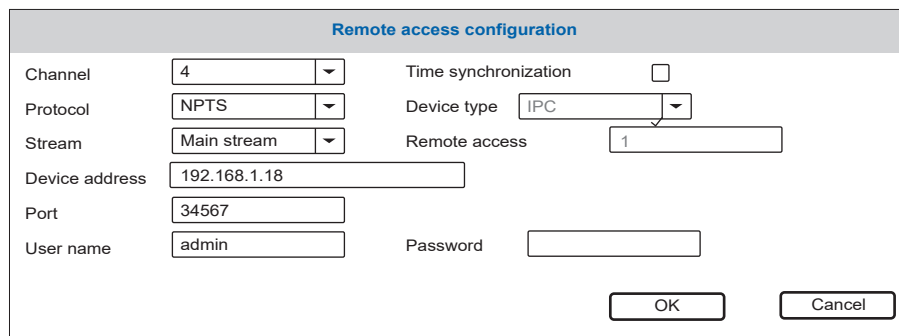
- 1) In the **Settings** → **System** → **Channel type** menu choose 2 analog and 2 digital channels display mode, then press «OK» button to save settings;
- 2) In standby mode swipe any direction across the screen to enable the toolbar and press  icon to enter IP camera adding menu;



Press «Search» button to enter IP camera search menu in local network. Press «Search» button again to display available IP cameras list. Choose the IP camera from the list and press «Add» button to add it to the monitoring list.

Press icon to delete corresponding IP camera from the monitoring list.

Press icon to change corresponding IP camera stream parameters. You will see next screen:



If IP camera has not been detected automatically then user can add it manually. Press «Manual add» button in IP camera search menu and fill in following parameters to add a camera manually:

Channel – monitor channel number to add current IP camera stream;

Protocol – IP camera data exchange protocol;

Stream – Main or sub stream;

Device address– camera IP address;

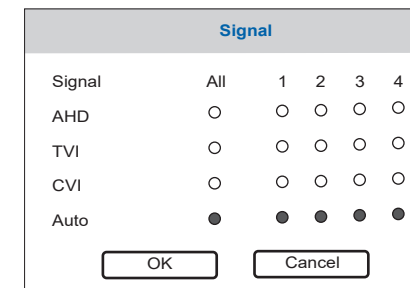
Port – port number;

User name – IP camera login user name;

Password – IP camera access password.

6.2.7. Video signal type

Swipe any direction across the screen to enable the toolbar and press icon. You can see following menu:



Choose signal type for every video input (1, 2 - first and second outdoor panels; 3, 4 - first and second video cameras) or choose «Auto» to enable video signal type autodetection.

6.2.8. Monitor reboot

Swipe any direction across the screen to enable the toolbar and press icon. Choose the required action:

Logout – logout current user account;

Shut down – turn off the monitor power;

Reboot – monitor reboot.

7. Web browser settings

7.1. General conditions

Web browser software installation enables door phone remote control through the PC.

It is recommended to use Windows XP, Windows 7, Windows 8 or Windows 10 with Internet Explorer browser version 7.0 and higher.

7.2. Network security settings

Make following steps to perform browser setup for the monitor remote access:

Open Internet Explorer browser and press «Tools» icon on the upper right side of the window, then go to «Internet options» menu and choose «Security» bookmark. Press «Custom level...» button and set «Enable» option for the next ActiveX settings and plugins:

- Automatic prompting for ActiveX controls;
- Script ActiveX controls, marked safe for scripting;
- Run ActiveX controls and plug-ins;
- Initialize and script ActiveX controls, not marked as safe for scripting;
- Binary and script behaviors;
- Allow scriptlets;
- Download signed ActiveX controls;
- Download unsigned ActiveX controls.

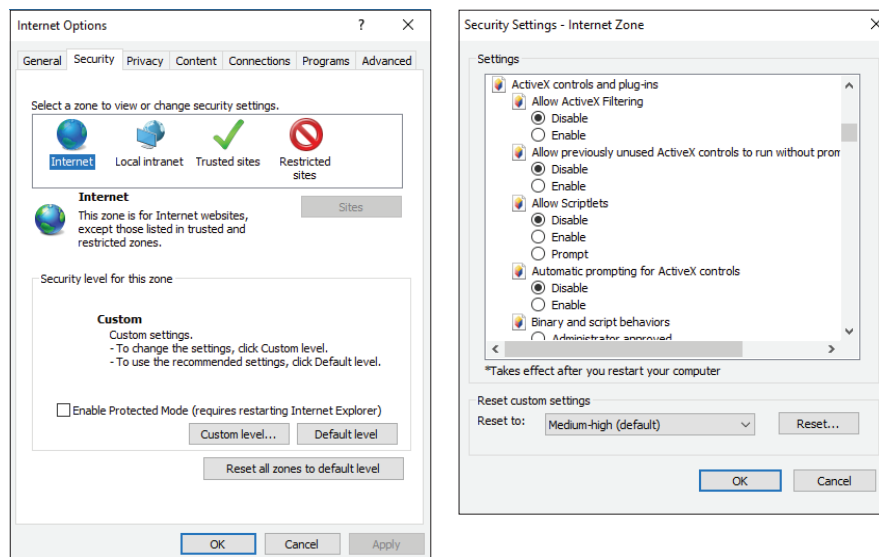
Press «OK» button and choose «Advanced» bookmark. Find «Security» settings and activate the option:

- Allow software to run or install even if the signature is invalid.

Press «OK» to save current setting.

Note:

Access to the monitor main page can be blocked by Windows firewall and other antivirus software.



7.3. Network connection settings

Monitor remote access can be carried out through the Internet or local network connection. Client computer IP address must use the same network segment with the monitor. In global network the only requirement is that PC and the monitor must be available to use public network and Internet connection using IP address or dynamic domain name.

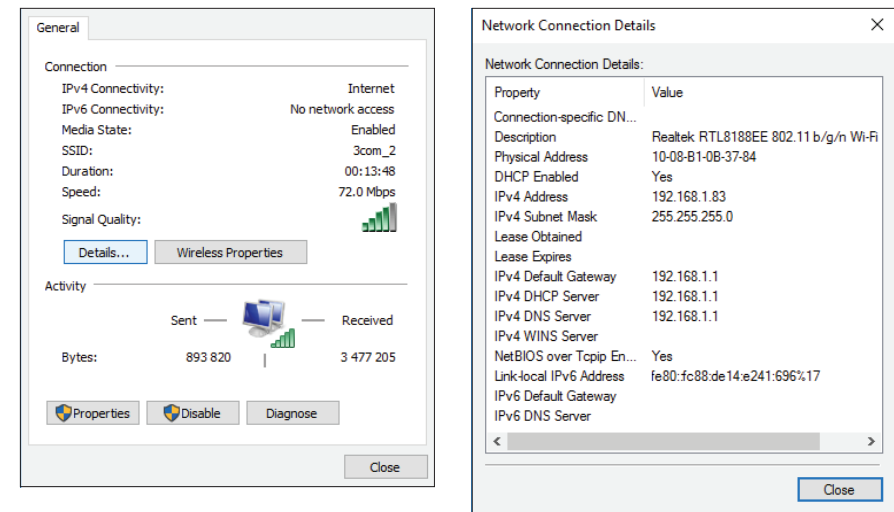
Local network connection settings are described below:

1) Check computer IP address, subnet mask and default gateway. To do this press right mouse button on the Windows «Start» button and choose «Network connections» menu. Doubleclick left mouse button on the currently used network connection and then press «Details...» button.

Here you can see network parameters of the computer, such as IP address, subnet mask and default gateway.

Note:

There is also another way to access network parameters display. Press right mouse button on the «Network» icon on the task manager bar (or on the desktop) and choose «Open Network and Sharing Center» → «Change adapter settings». Doubleclick left mouse button on the currently used network connection and then press «Details...» button.



2) Set appropriate IP address from the current network segment, subnet mask and gateway in the monitor settings (Configuration → Network → Basic). In the current example IP address can be set as 192.168.1.X, where X – any number in range 2-254, (except IP addresses that already exist in that network segment). Subnet mask – 255.255.255.0 and gateway – 192.168.1.1

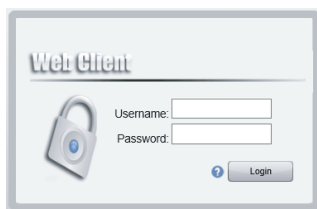
Note:

If monitor is connected to the Internet directly then public IP address must be used.

7.4. Installing browser plugin

After all settings has been made, open browser and enter door phone IP-address (Sttings → Network → IP address) into browser address line. For example if monitor IP address is **192.168.1.50** then type **http://192.168.1.50** into browser address line.

After entering monitor web page you will be asked to install monitoring software. Confirm this installation and then you can enter monitor web interface:



Enter user name and password (if it is set) then press «Login» button.

User name: default user name is **admin**

Password: default password is disabled (just type user name and press «Login» button)

7.5. User web interface

Web interface main page has several bookmarks on the top:

Playback – view records from outdoor panels and cameras;

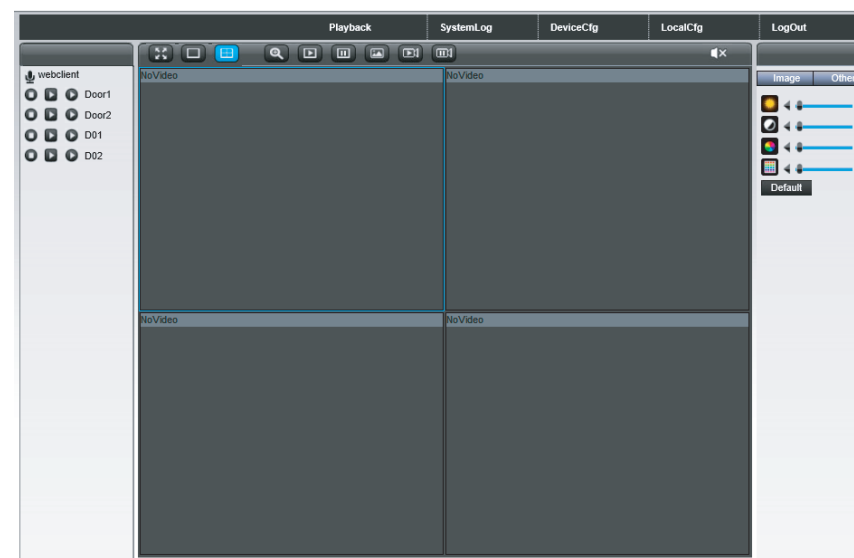
System log – system and alarm events log;

Device configuration – remote access settings;











Local configuration – local storage and alarm settings;

Logout – exit web interface.




Web interface main page has following buttons and panels:



Top panel buttons description:





-  – full screen mode;
-  – single channel mode (1 video channel on the screen);
-  – quad channel mode (4 video channels on the same screen);
-  – zoom instrument (drag zooming area while holding left mouse button);
-  – enable image streaming for all video channels;
-  – disable image streaming for all video channels;
-  – take a snapshot from current video source;
-  – start all channels video recording;
-  – stop all channels video recording;
-  – enable/disable sound (in case if there is a microphone).

Left panel buttons description:

-  – start/stop recording for current video channel;
-  – enable/disable sub stream for current video channel;
-  – enable/disable main stream for current video channel.

Right panel has two bookmarks: «Image» and «other».

«Image» bookmark:

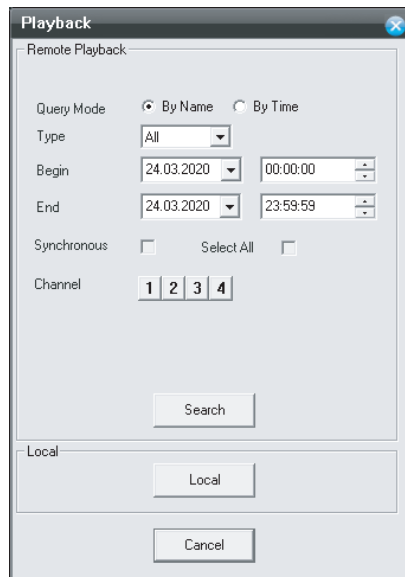
-  – brightness setting;
-  – contrast setting;
-  – color setting;
-  – color temperature setting;
- Default** – restore default settings;

«Other» bookmark:

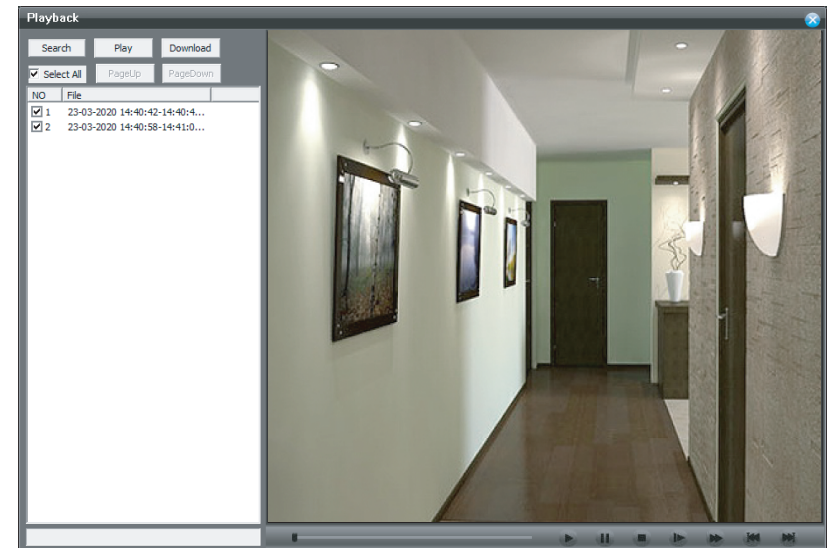
- Reboot** – monitor restart;
- Ratio** – change web interface aspect ratio from 3:4 to 16:9 and vice versa.

7.5.1. Playback

Press «Playback» bookmark on the top of web interface main page. Here you can set records parameters for searching:

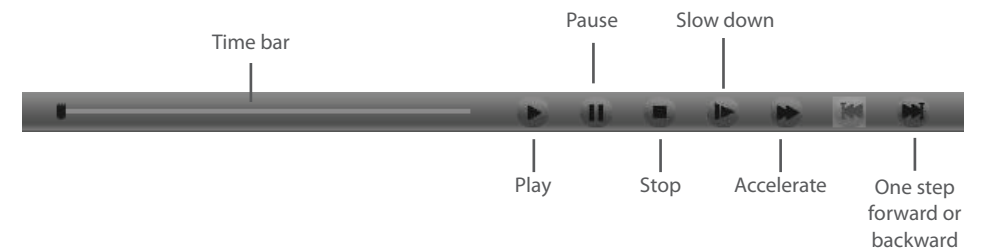


Set query mode, record type, time interval and channel number for searching (only one channel available for searching at one time). Press «Search» button to display records list:



Doubleclick left mouse button on any record from the list to start playback.

Playback control situated on the bottom side of the screen:



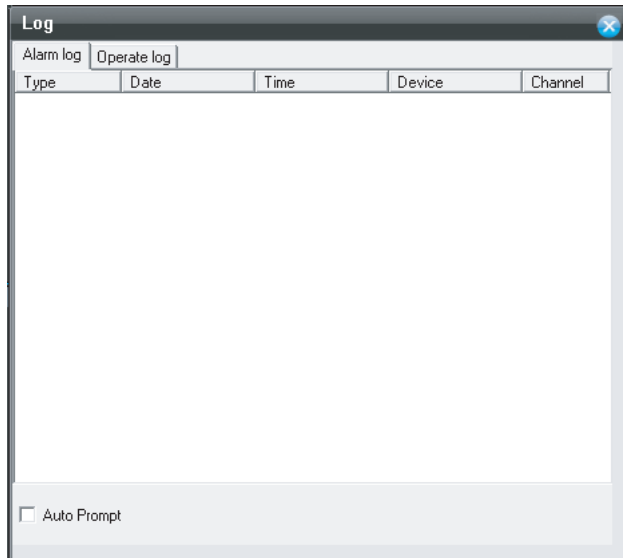
User can also play local records, saved on the PC. Press «Local» button under «Playback» bookmark and choose record file name to start playback.

Note:

Default local path for saved pictures is «C:\Picture», for saved records is «C:\Record».

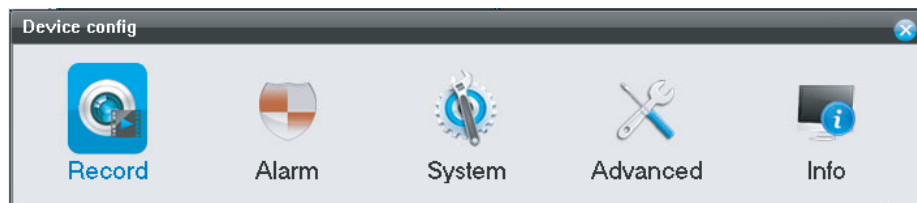
7.5.2. System log

Press «System log» bookmark on the top of web interface main page. Here you can check system and alarm events log:



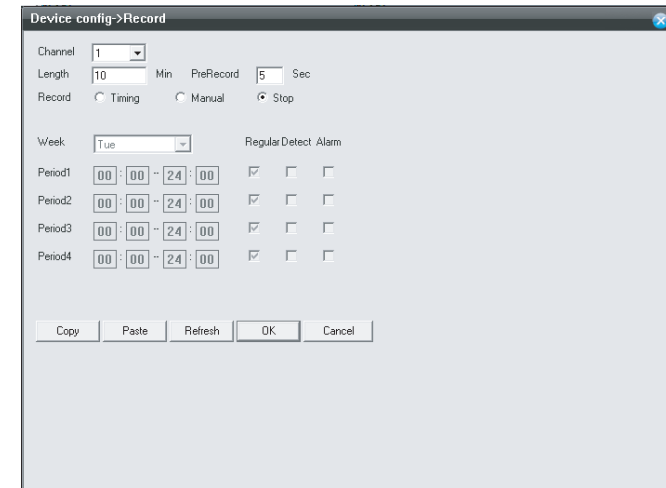
7.5.3. Device configuration

Press «Device configuration» bookmark on the top of web interface main page. Here you can change settings for such functions as recording , alarm, system settings, advanced settings and check system info:



Record settings (Device configuration → Record → Record)

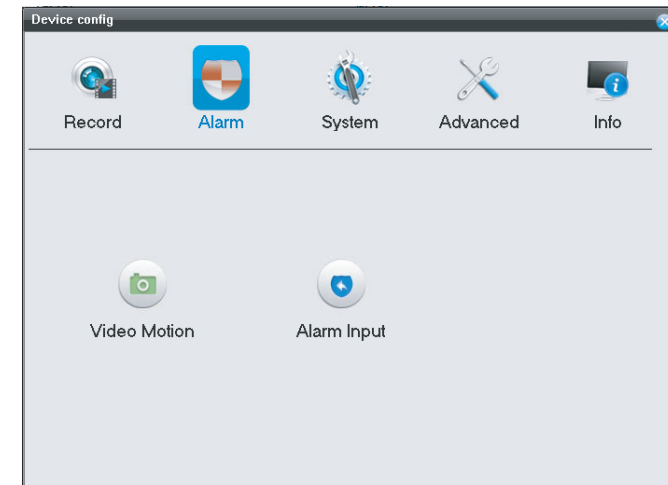
Press «Record» icon in «Device configuration» bookmark menu to enter record settings. Here you can set recording schedule for each video channel individually:



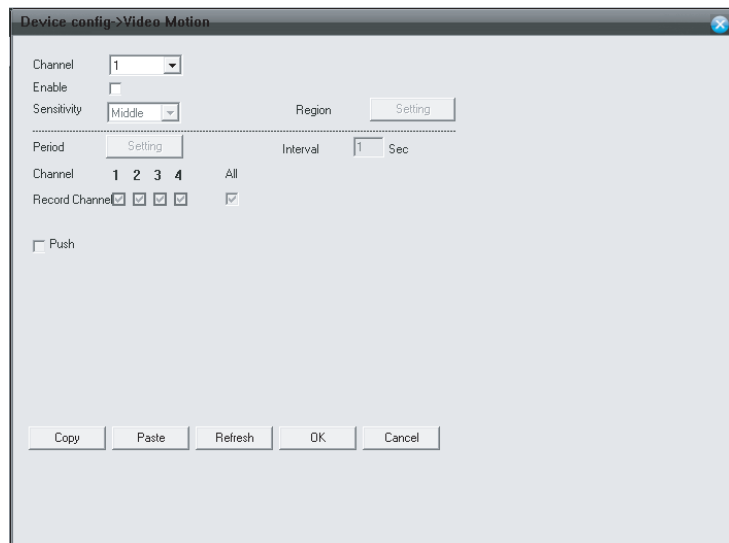
Alarm settings (Device configuration → Alarm)

Press «Alarm» icon in «Device configuration» bookmark menu to enter alarm settings. Here you can see two icons:

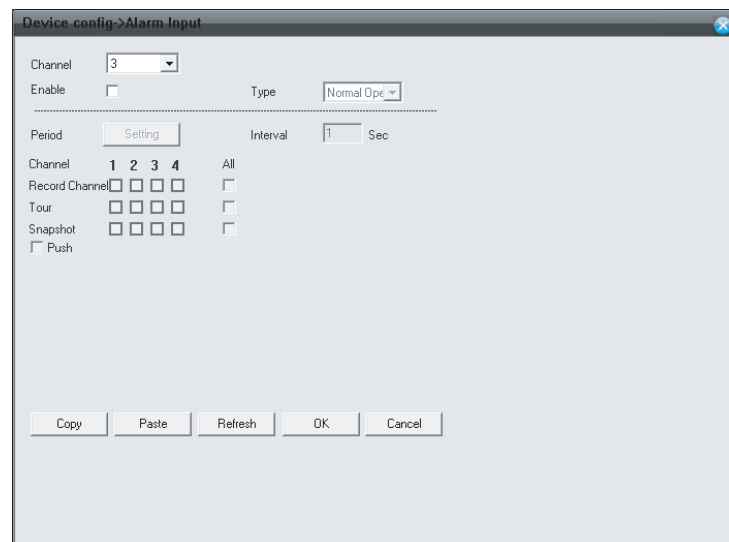
- Video motion – program motion detection settings;
- Alarm input – hardware motion detection settings (available only for the 3rd and the 4th video channels).



Device configuration → Alarm → Video motion



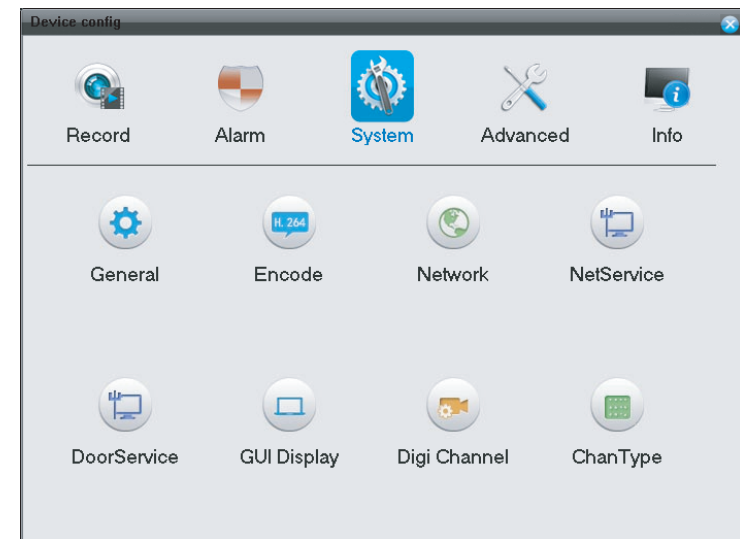
Device configuration → Alarm → Alarm input



System settings (Device configuration → System)

Press «System» icon in «Device configuration» bookmark menu to enter system settings. Here you can see eight icons:

- General – date and time, language, overwriting, input signal type and screensaver settings;
- Encode – video stream quality and speed settings for every video channel;
- Network – IP address, subnet mask, gateway, DNS server name and port numbers settings;
- Net service – IP filtering, DDNS, Wi-fi and RTSP stream settings;
- Door service – incoming call record mode, «Do not disturb» mode, call melody, volume, incoming call time length and unlocking time settings;
- GUI display – status indicators visibility settings;
- Digital channels – adding IP cameras for the 3rd and the 4th video channels;
- Channel type – input signal type for the 3rd and the 4th video channels.



Device configuration → System → General

The 'Device config->General' window contains the following settings:

- System Time: 25.03.2020, 19:24:56
- Date Format: YYYY MM DD
- Date Separator: .
- Time Format: 24-HOUR
- Language: ENGLISH
- SD Full: Overwrite
- Video Standard: PAL
- CVBS Out: HD
- ScreenSaver: Disable

Buttons: Refresh, OK, Cancel

Device configuration → System → Network

The 'Device config->Network' window contains the following settings:

- Net Card: Wire Netcard, DHCP Enable (checked)
- IP Address: 192 . 168 . 1 . 18
- Subnet Mask: 255 . 255 . 255 . 0
- Gateway: 192 . 168 . 1 . 1
- Use DNS server address below:
 - Primary DNS: 192 . 168 . 1 . 1
 - Secondary DNS: 0 . 0 . 0 . 0
- TCP Port: 34567, HTTP Port: 80
- High Speed Download: (unchecked)
- MAC: c8 : 22 : 02 : 35 : dc : 78
- Transfer Policy: Adaptive

Buttons: Refresh, OK, Cancel

Device configuration → System → Encode

The 'Device config->Encode' window contains the following settings:

- Channel: 1
- Compression: H.264
- Resolution: 1080P(1920x1080), CIF(352x288)
- FPS: 25, 8
- Bit Rate Type: VBR, VBR
- Quality: high, low
- Bit Rate(Kb/S): 4096, 166
- I Frame Interval: 2, 2
- Video/Audio: (checked), (checked)

Buttons: Copy, Paste, Refresh, OK, Cancel

Device configuration → System → Net service

The 'Device config->NetService' window displays a list of services:

- IP FILTER
- DDNS
- Wifi
- RTSP

Buttons: OK, Cancel

Device configuration → System → Door service → Basic

Basic

CallREC: Video

Do Not Disturb: Enable

DND schedule: 00 : 00 00 : 00

OK Cancel

Device configuration → System → GUI display

Device config->GUI Display

CAM Name: Setting

FrontOut: _____

Time Title: CHANNEL

Video Status: Alarm status

Antijitter:

Time Title: CHANNEL Setting

Refresh OK Cancel

Device configuration → System → Door service → Ring

Ring

Door 1 Ring: 2

Door 2 Ring: 8

Volume: 1

Ring Time: 15

Door 1 Unlock Time: 2

Door 2 Unlock Time: 2

Buttonsound: Disable

OK Cancel

Device configuration → System → Digital channels

Device config->GUI Display

AutoAdd: AutoSearch:

Channel: 3 Enable

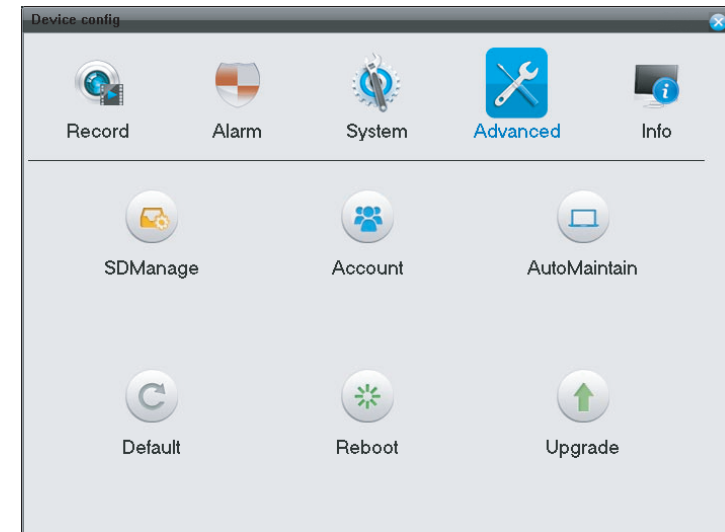
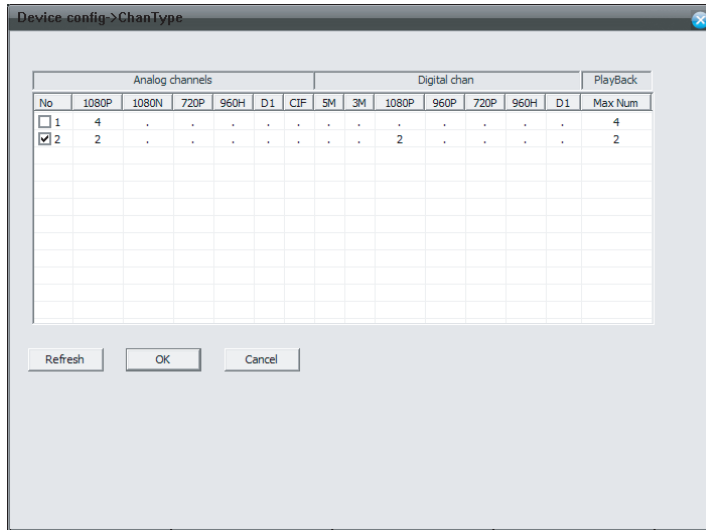
Time:

Network: _____

No	Configuration Name	Device Type	IP Address	Remote
1	01	IPC	192.168.1.18	1

Add Delete Refresh OK Cancel

Device configuration → System → Channel type

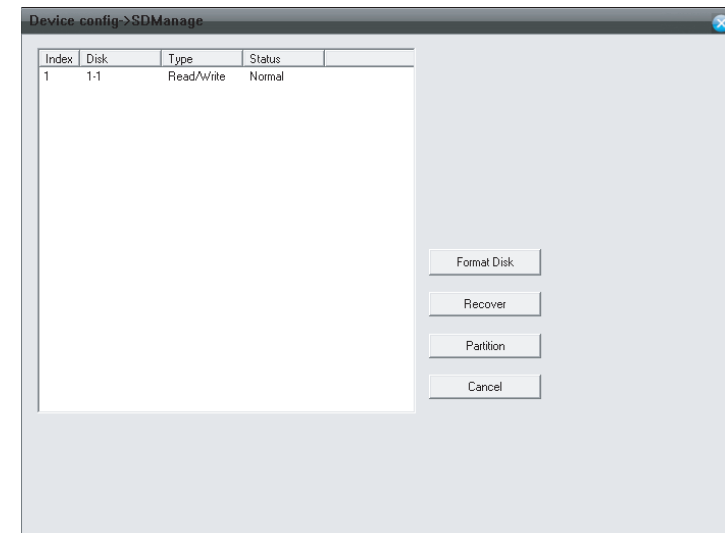


Advanced settings (Device configuration → Advanced)

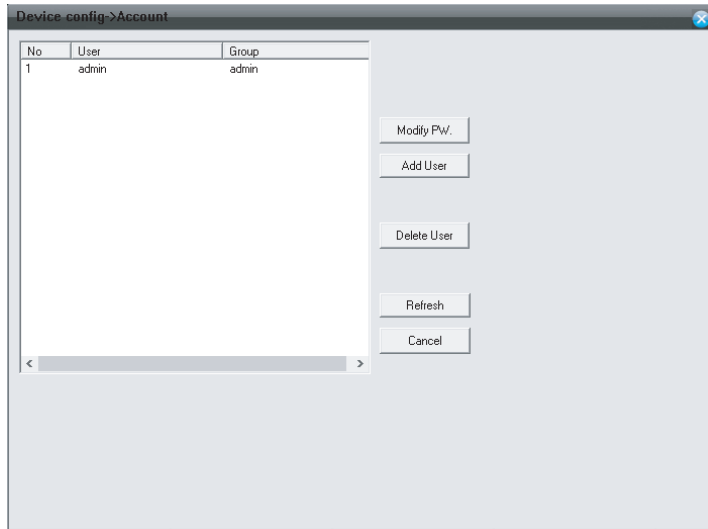
Press «Advanced» icon in «Device configuration» bookmark menu to enter advanced settings. Here you can see six icons:

- SD Manage – SD card format and recovery;
- Account – account management, add new account or delete existing account;
- Auto maintain – automatic reboot or old files delete;
- Default – restore factory default settings;
- Reboot – monitor restart;
- Upgrade – monitor software upgrade.

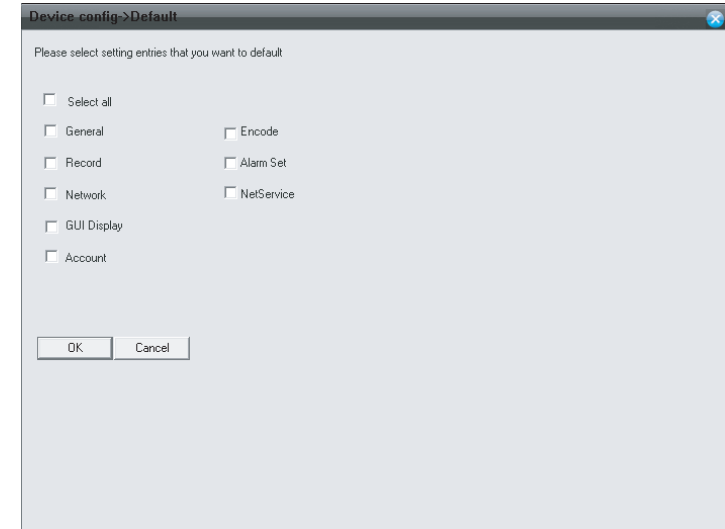
Device configuration → Advanced → SD manage



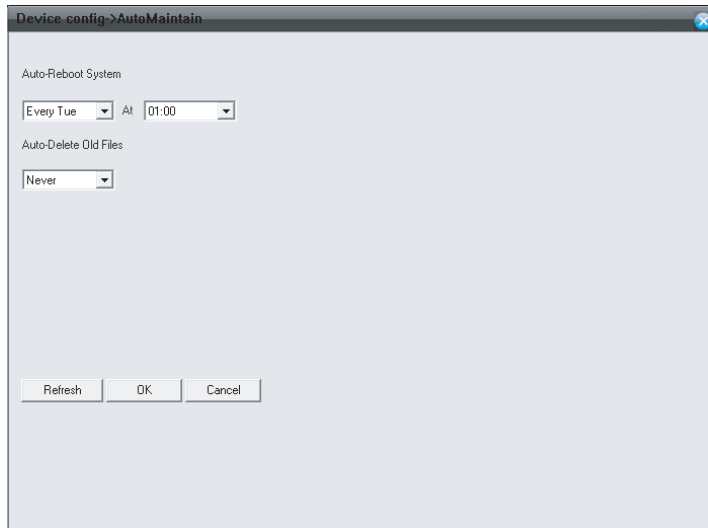
Device configuration → Advanced → Account



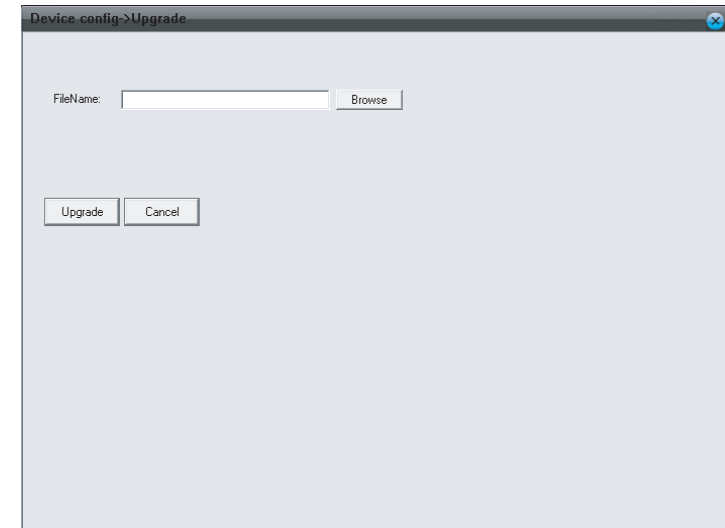
Device configuration → Advanced → Default



Device configuration → Advanced → Auto maintain



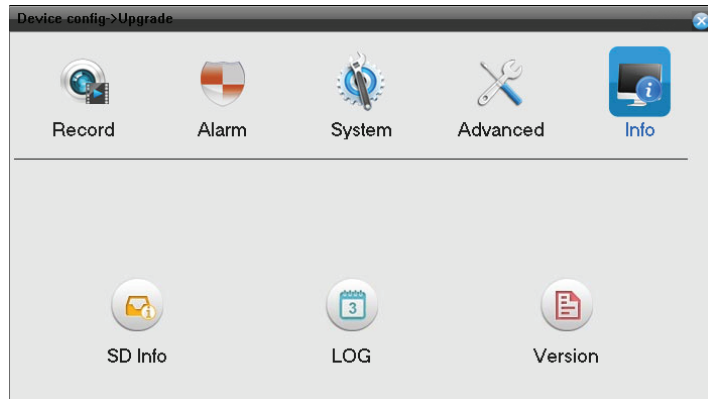
Device configuration → Advanced → Upgrade



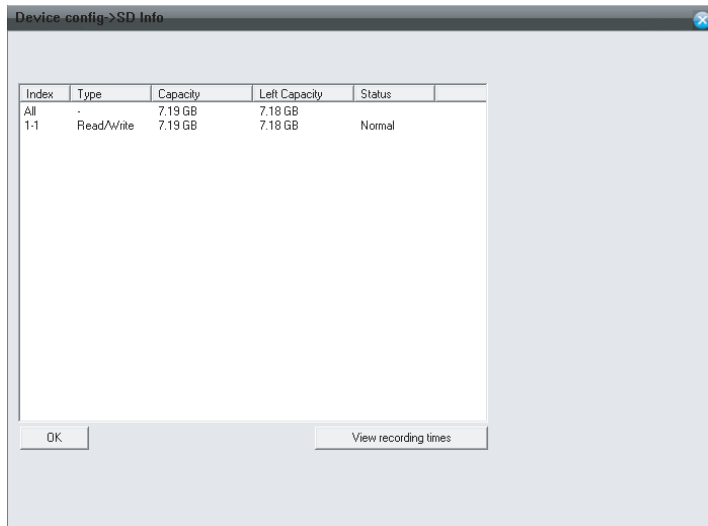
Device information (Device configuration → Info)

Press «Info» icon in «Device configuration» bookmark menu to enter device information menu. Here you can see three icons:

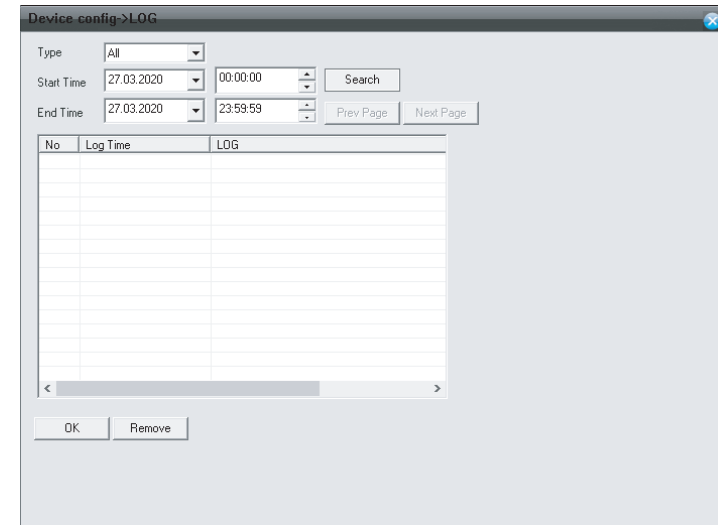
- SD info – SD card status, capacity and free space;
- Log – system events log;
- Version – monitor software information, release date and UID.



Device configuration → Info → SD info



Device configuration → Info → Log



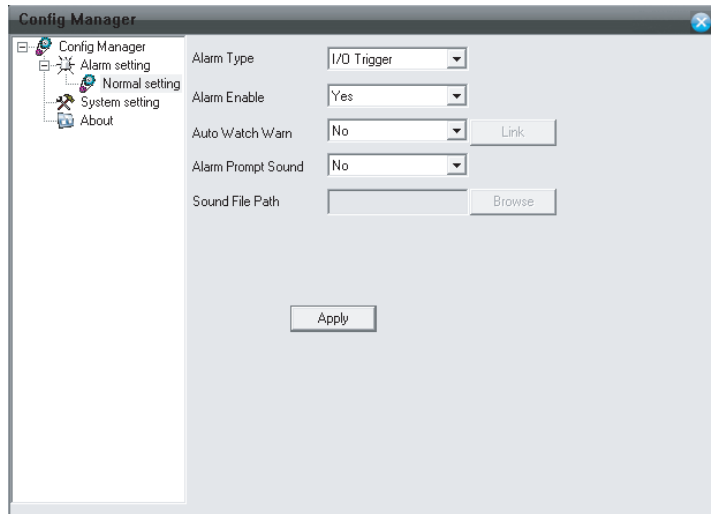
Device configuration → Info → Version



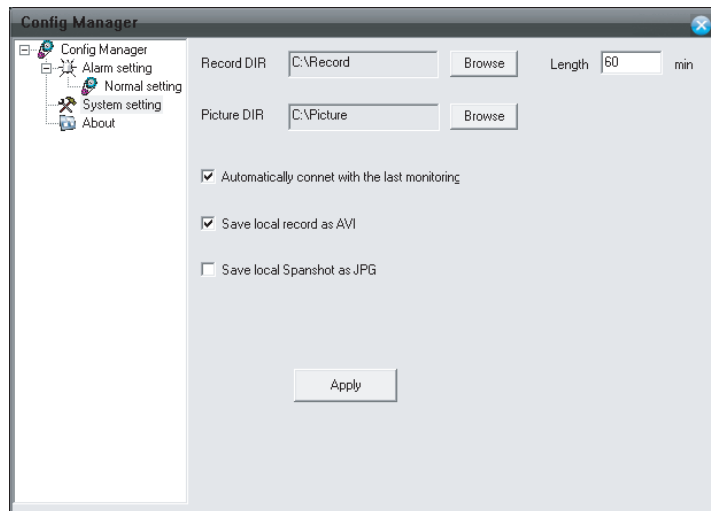
7.5.4. Local configuration

Press «Local configuration» bookmark on the top of web interface main page to enter local configuration menu. Here you change local alarm settings, local storage path for snapshots and video records:

Local configuration → Configuration manager → Normal setting



Local configuration → Configuration manager → System setting



8. Mobile application

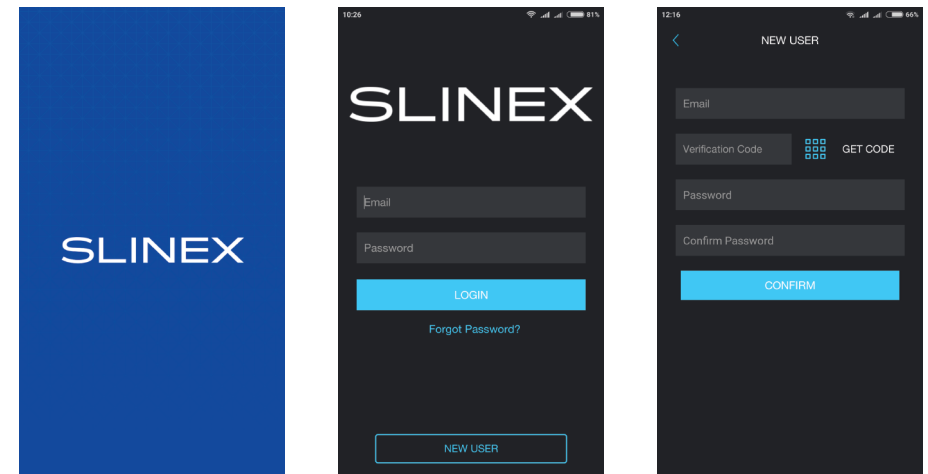
Enter «Google Play» (for Android) or «Apple App Store» (for iOS) and search for «Cloud Call» application, then install this application on your mobile device.



Below you can find basic steps how to add new device to «Cloud Call» application. Full manual on «Cloud Call» application you can find on www.slinex.com

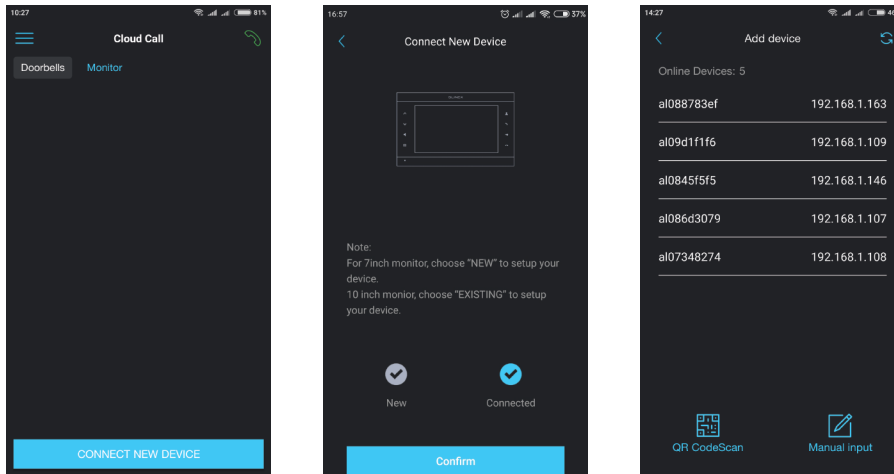
8.1 Creating new account

- 1) Start «Cloud Call» application on your mobile device and press «NEW USER» button to create an account;
- 2) Fill in «Email» box and press «GET CODE» button;
- 3) Check for a new message with activation code on your Email account and enter it into «Verification Code» box;

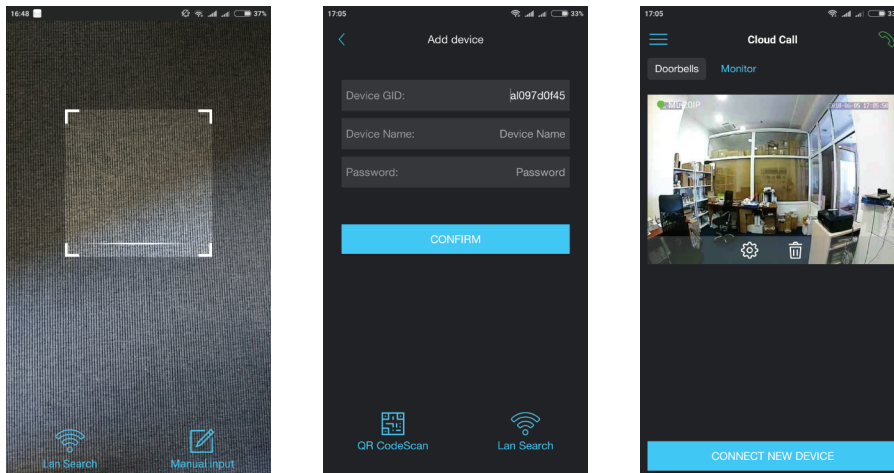


8.2 Network connection steps

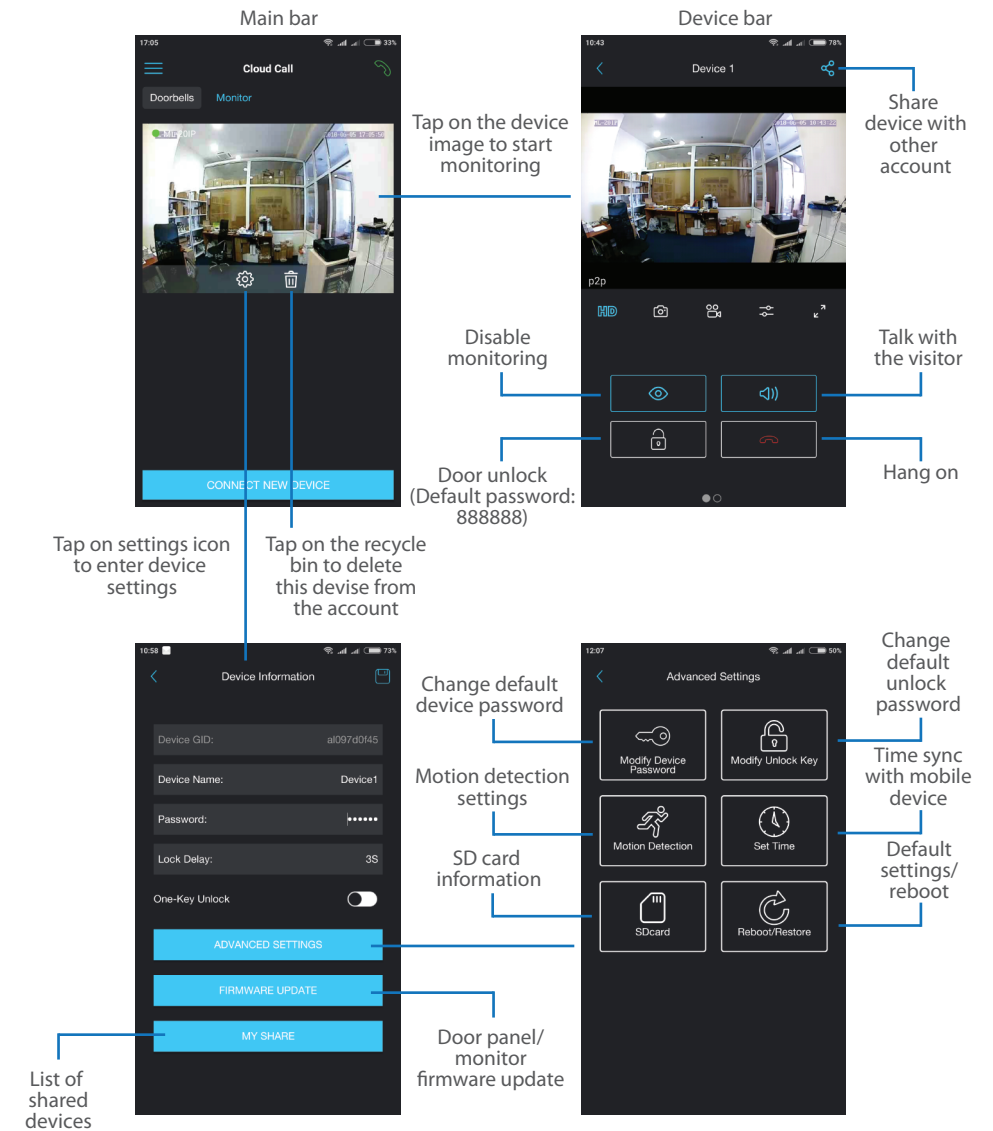
- 1) Use twisted pair CAT5 or CAT6 cable to connect monitor to the router or use Wi-Fi connection;
- 2) Connect mobile device into the same local network as the monitor is already connected to;
- 3) Press «CONNECT NEW DEVICE» button in the application, then choose «EXISTING» check box and press «CONFIRM» button;
- 4) New devices search will be applied and you will see the list of the devices, connected to the local network;

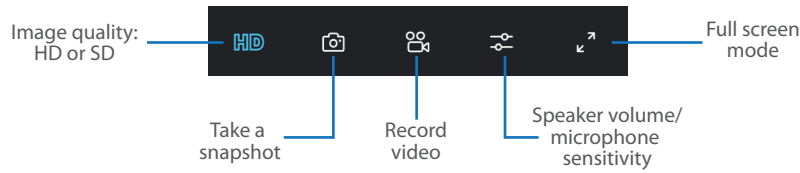


- 5) Tap on UID in the left column, corresponding to the monitor sticker or press «QR CodeScan» button and then scan QR code on your device sticker, if device UID isn't in the list;
- 6) Fill in device information:
 Device UID: unique identification number of the device (already filled);
 Device Name: any name you like;
 Password: (empty by default);
 then press «CONFIRM» button and you will see added device on the main bar.



8.3 Operation





Note:

While device monitoring, one way audio is constantly active from the outdoor panel side so you can hear what is happening nearby. To activate two way communication press «Talk with the visitor» button in the application.

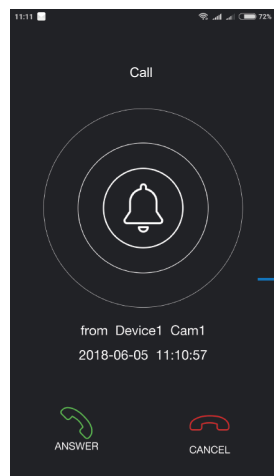
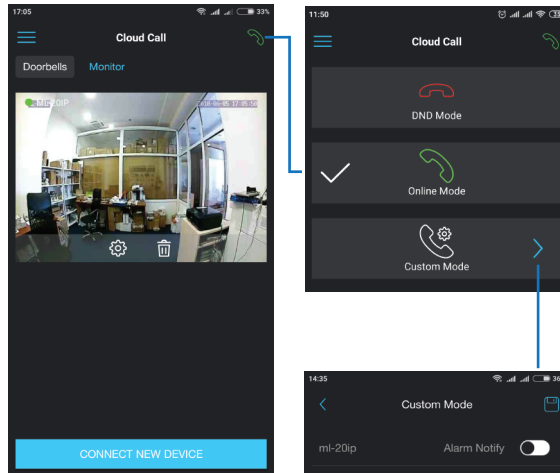
8.4. Notification messages

Press button to activate notification messages preset.

DND mode – notification messages are disabled;

Online mode – notification messages are enabled;

Custom mode – notification messages can be enabled or disabled depending on the settings in this preset;

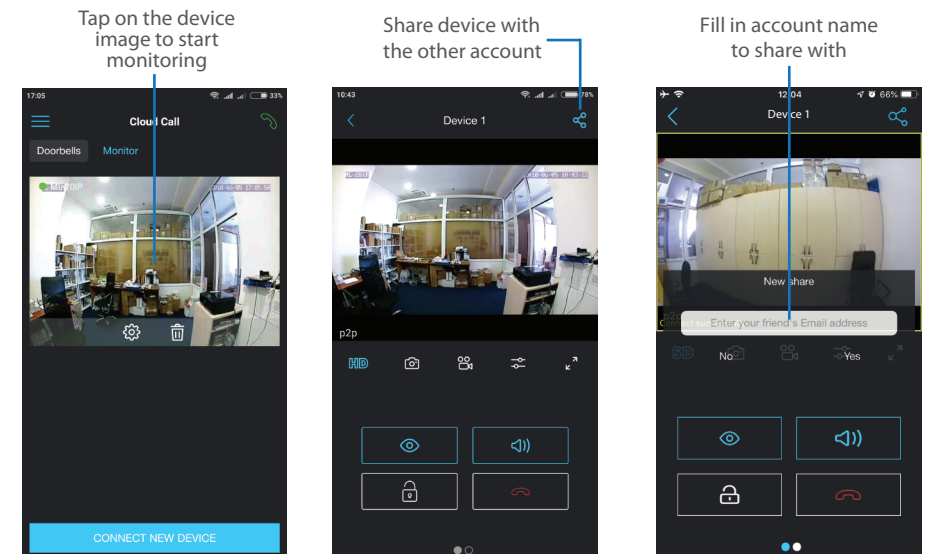


In case notification messages are enabled then you will receive push message if somebody presses call button on the outdoor panel. Press «ANSWER» button to start talking with the visitor or «CANCEL» button to stop the call.

8.5. Sharing with other devices

The account, device was added for the first time, is master account. This account has master permissions and can change all the settings. If several mobile phones are going to be used with the same device then account should be created on every mobile phone. Here are the steps to add the same device on several mobile phones:

- 1) Create an account on the first mobile phone application and add your device. This mobile phone will have a master permissions for that device;
- 2) Create an account on all other mobile phones which the same device is going to be used;
- 3) Start device monitoring on master mobile phone and then press «Share» icon in the right upper corner of the screen;
- 4) Fill in account name of the mobile phone which current device will be shared. In a few moments device will appear on the second mobile phone application. Note that all other mobile phones except master can only talk with the visitor, view the image and open lock. Changing device settings is not available on the slave mobile phones.
- 5) In the same way add all other mobile devices into sharing list.



9. Limited warranty

Manufacturer guarantees product normal functioning during the warranty period if the user keeps all safety instructions described in that manual.

Warranty period is 12 months from the moment of the product purchasing (warranty period could be extended up to 24 months or more, depending on the local regulations).

Warranty period allows user to make guarantee repair in cases when normal functioning of the product was violated by the fault of manufacturer and the user has not offend transporting, installation and working conditions.

This limited warranty does not cover any damage to the product that results from improper installation, accident, abuse, misuse, natural disaster, insufficient or excessive electrical supply, abnormal mechanical or environmental conditions, or any unauthorized disassembly, repair or modification.

Warranty void in such cases:

- the product was damaged by the fault of the customer;
- the product wasn't properly installed according recommendations from the manual;
- the sticker on the backside of the product was broken;
- the product was not used for its intended function.

This limited warranty covers only repair, replacement, refund or credit for defective products, as provided above. Manufacturer is not liable for, and does not cover under warranty, any damages or losses of any kind whatsoever resulting from loss of, damage to, or corruption of, content or data or any costs associated with determining the source of system problems or removing, servicing or installing products.

This warranty excludes third party software, connected equipment or stored data. Manufacturer is therefore not liable for any losses or damage attributable to third party software, connected equipment or stored data.

In the event a product has been discontinued, manufacturer shall either repair the product, offer to replace it with a comparable product or provide a refund at the lesser of the purchase price or the product's current value.

Repaired or replacement products will continue to be covered by this limited warranty for the remainder of the original warranty term.