

Design. Uniqueness. Innovations.

Technical support



User manual
download



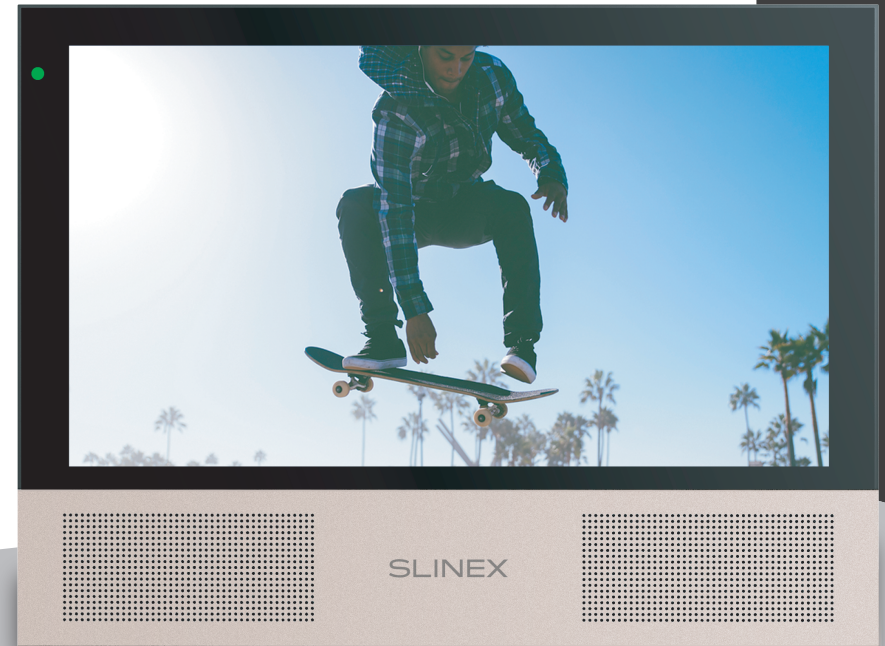
Thank you for
choosing our equipment

SLINEX

Design. Uniqueness. Innovations.

SONIK 7

7" video intercom
with touch screen



User manual

SLINEX

Attention!



As a result of continuous upgrades and functionality improvements, technical characteristics of the device can be changed without any preliminary declaration. This manual can contain some inaccuracy or misprint. The owner reserves the right to make corrections to the information described in the user manual and device package. The last revision of this manual is available on www.slinex.com

Safety instructions

- Read and keep that manual.
- The device installation process should be carried out by the qualified specialists.
- Use the device from -10 °C to +55 °C, always keep it within that temperature range.
- Installation surface should be free from vibration and impact influence.
- Keep this device far from open sources of heat, such as radiators, heaters, and ovens.
- The device can be installed near other electronic equipment in case if the temperature of the environment does not exceed previously mentioned range.
- The device should be protected from the direct influence of the natural phenomena, such as direct sunlight, rain or snow.
- Don't use aggressive or abradant detergent for the device surface cleaning.
- Use soft wet cloth or tissue to remove strong dirt.
- Don't overpower outlets. It can cause fire or electric shock.

Nature protection



Don't throw away the device with other industrial or nutritive trash if you see that symbol. Some regions have separation and recycling systems for the electronic equipment. Connect with local authorities to receive information about recycling of electronic equipment for your region.

Rights and limitation of liability

All rights reserved. Any part of that document can not be published in any form, translated into other languages or reproduced in any way including electronic or mechanical. Document recording and copying is strictly denied without owner permission.

Table of contents

- 1. Package 3
- 2. Specification 3
- 3. Description 4
- 4. Installation 5
 - 4.1. Cable requirements 5
 - 4.2. Schematic diagrams 6
 - 4.3. Unit mount 8
- 5. Operation 9
 - 5.1. Incoming call 9
 - 5.2. Outdoor panel and camera monitoring 10
 - 5.3. Incoming call redirection 11
 - 5.4. Intercom 12
- 6. Main menu 12
- 7. Settings 14
 - 7.1. System settings 14
 - 7.2. Ring settings 15
 - 7.3. Video settings 16
 - 7.4. Memory settings 17
 - 7.5. Software motion detection settings 17
 - 7.6. Hardware motion detection settings 19
 - 7.7. Photo frame settings 21
 - 7.8. Monitor software version 21
 - 7.9. Reset to default settings 22
- 8. File manager 22
 - 8.1. Video playback 23
 - 8.2. Photo playback 23
 - 8.3. Custom MP3 ringtone 24
 - 8.4. Custom user images playback 24
- 9. Silent mode 25
- 10. Manual and automatic recording 25
- 11. Image and volume settings 25
- 12. Limited Warranty 26

1. Package

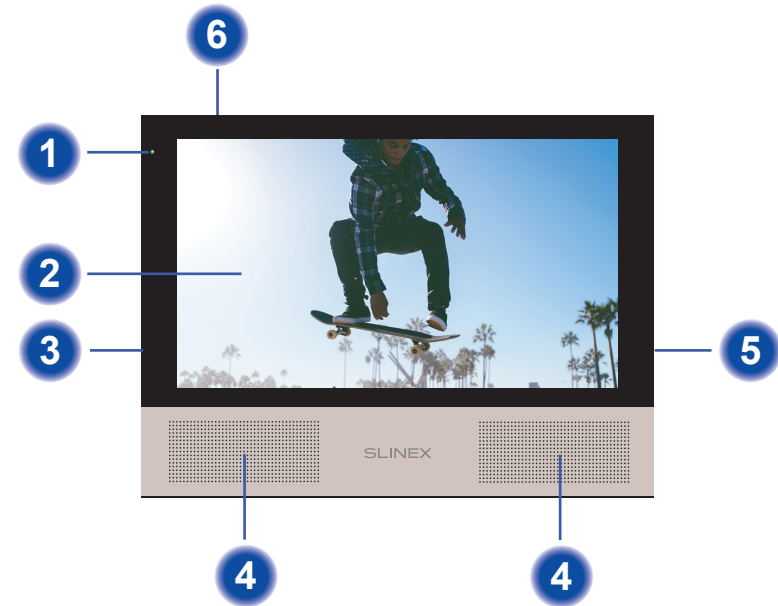
- Sonik 7 indoor monitor – 1 pc.
- Color panel – 1 pc.
- Wall mounting bracket – 1 pc.
- Connection wires – 7 pcs.
- Mounting screws and anchors – 1 pkg.
- User manual – 1 pc.

2. Specification



SCREEN 7", color IPS with touch screen	STANDBY MODE POWER CONSUMPTION 3 W
RESOLUTION 1024×600 px.	WORKING MODE POWER CONSUMPTION 7 W
VIDEO SYSTEM PAL / NTSC / AHD, TVI, CVI (720p,1080p)	POWER SUPPLY Built-in power supply, ~100–240 V
AUDIO TYPE Half duplex	MOUNTING TYPE Surface mount
CALL DURATION 70 seconds	DIMENSIONS 176×133×20 mm (6.93×5.24×0.78")
MEMORY MicroSD card, up to 64 Gb Internal memory, up to 100 snapshots	WORKING TEMPERATURE -10 ... +55 °C (+14...+131 °F)

3. Description



- 1 Status LED
- 2 Touch display
- 3 Power switch
- 4 Speakers
- 5 MicroSD card slot
- 6 Microphone

4. Installation

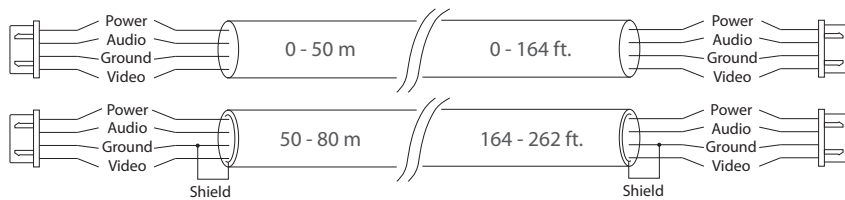
4.1. Cable requirements

Disconnect all power cables before device installation.

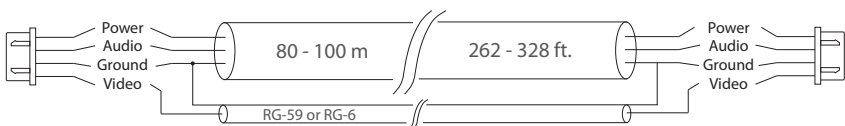
Cable type that is used for device connection depends on the distance between the last indoor monitor in the system and outdoor panel:

a) Use 4-wire cable with such parameters:

- distance up to 25 meters (82 ft.) use a cable with 0,22 mm² square of one wire (AWG 24);
- distance 25 to 50 (82-164 ft.) meters use a cable with 0,41 mm² square of one wire (AWG 21);
- distance 50 to 100 meters (164-328 ft.) use a cable with 0,75 mm² square of one wire (AWG 18).

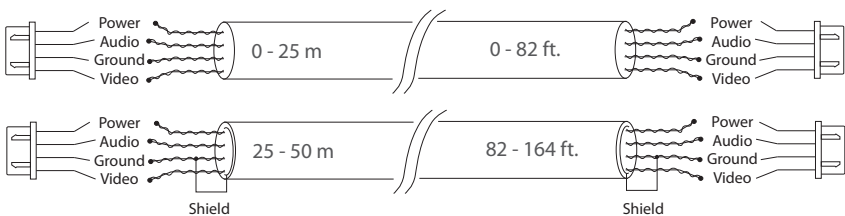


b) If the distance between door monitor and door panel is between 80 and 100 meters (262-328 ft.) then use a 3-wire cable with 0,75 mm² (AWG 18) square of one wire and RG-59 or RG-6 coaxial cable for the video signal.



c) Shielded or non-shielded twisted pair (not recommended):

- distance up to 25 meters (82 ft.) non-shielded twisted pair can be used;



4.2. Schematic diagrams

Diagram 1. Sonik 7 outdoor panels, cameras and locks connection.

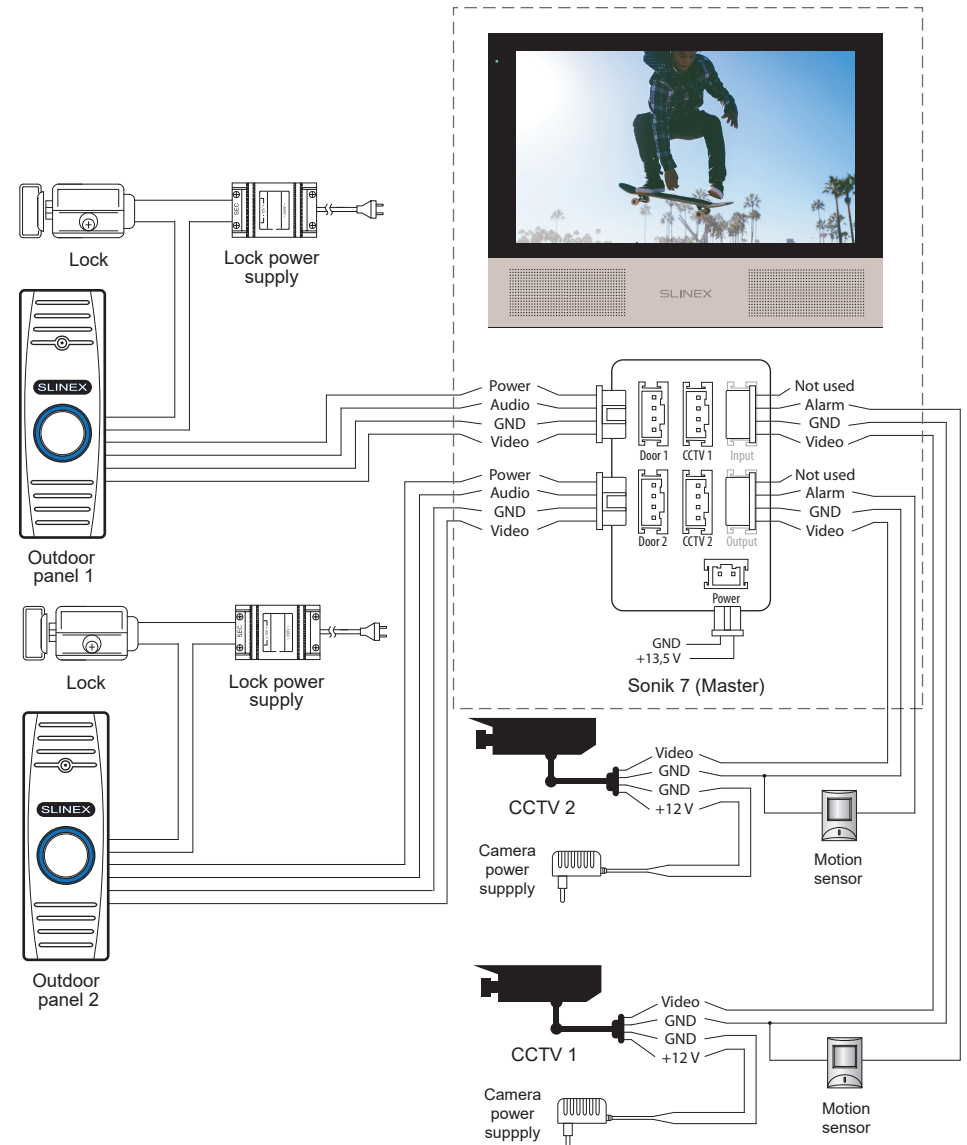
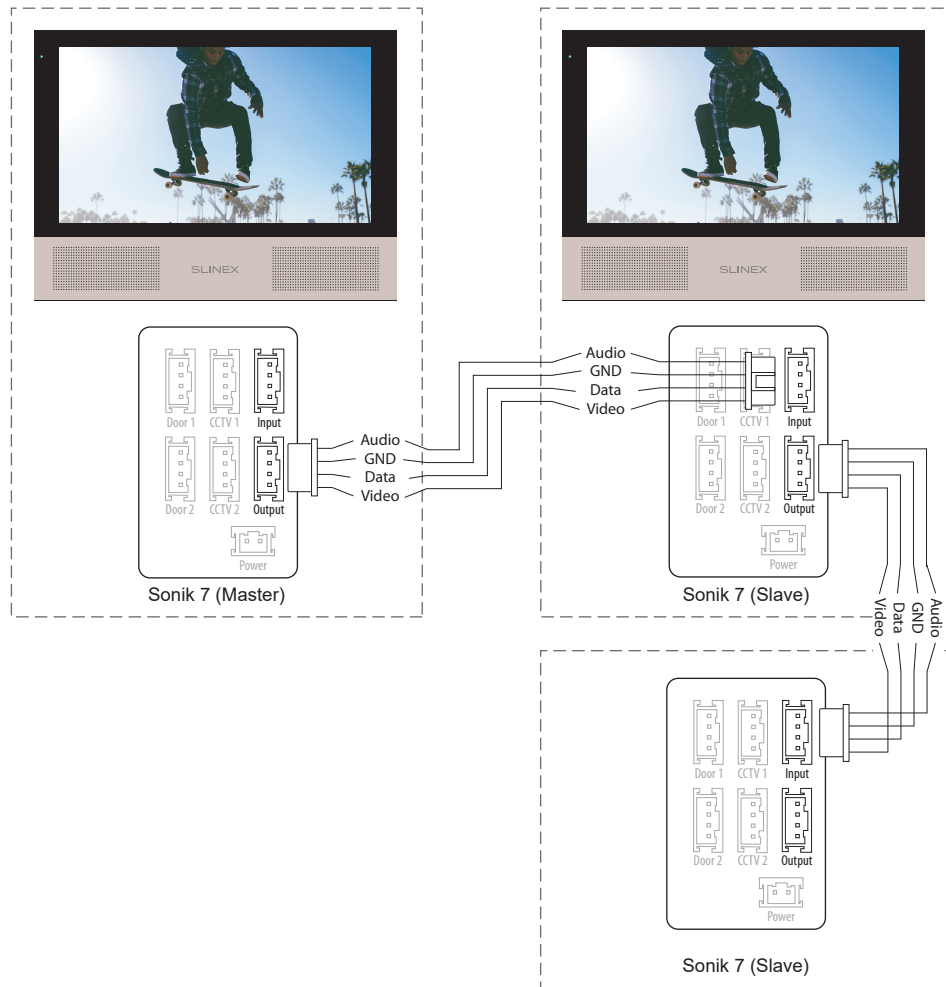


Diagram 2. Sonik 7 three monitors connection into one system.



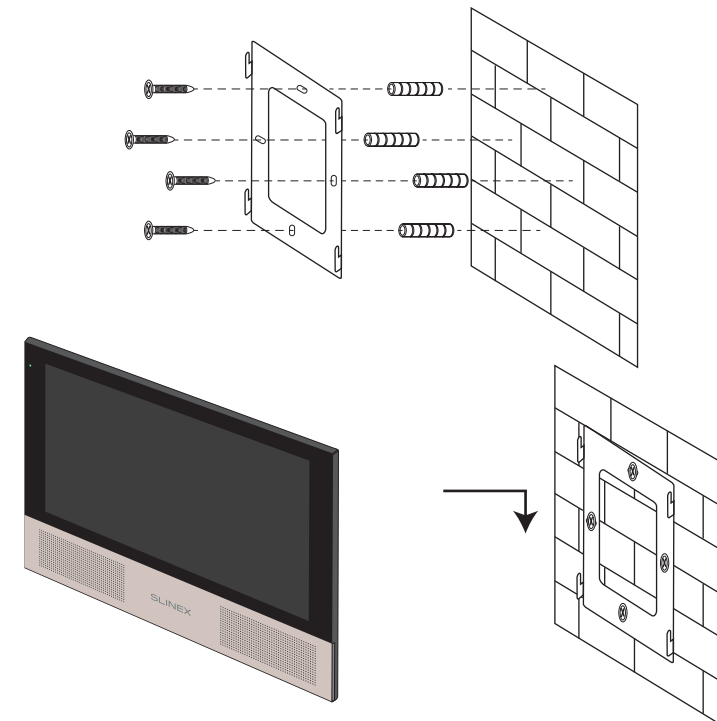
Notes:

* Use «Power» plug to connect external power supply +13,5 V. While use external power supply please keep main power cord ~100-240 V disconnected from the outlet, otherwise it can damage monitor circuits.

** Outdoor panels, cameras, power supplies, locks and motion sensors illustrated on the schemes are optional devices and aren't included into monitors kit.

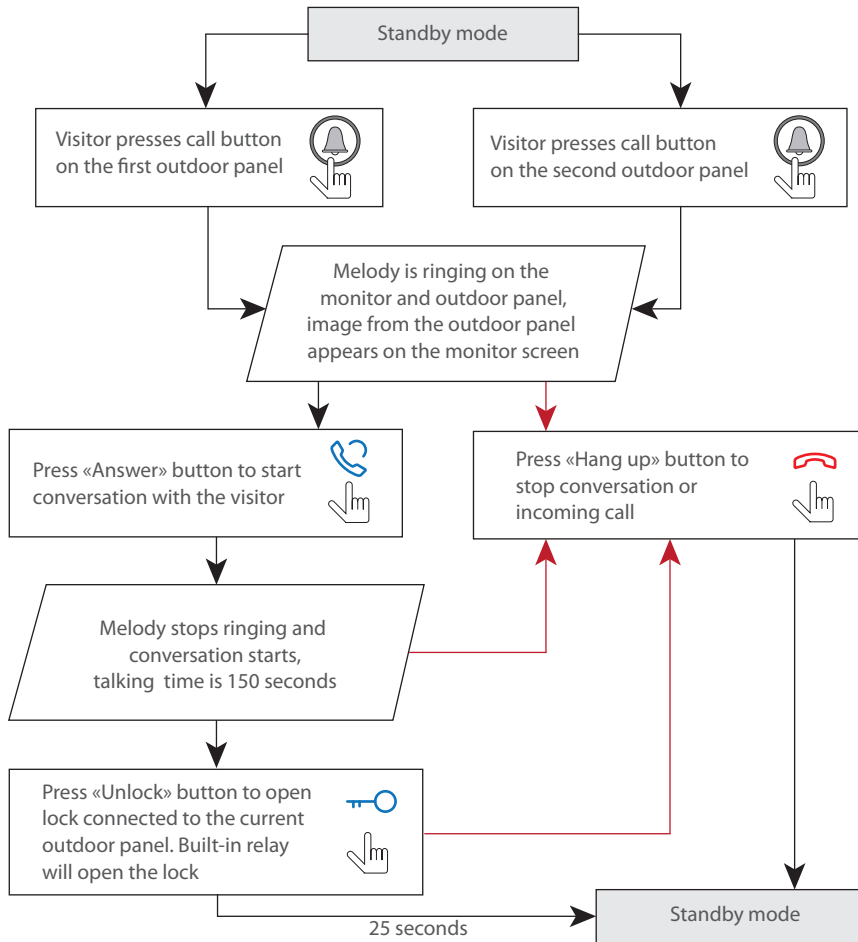
4.3. Unit mount

- 1) Take the surface mount bracket from the kit and place it on 150-160 cm height.
- 2) Mark and drill four holes in the wall.
- 3) Take four anchors from the kit and hammer them into the drilled holes.
- 4) Fix surface mount bracket on the wall with four screws from the kit.
- 5) Connect all communication wires and fix the monitor on the surface mount bracket.




5. Operation

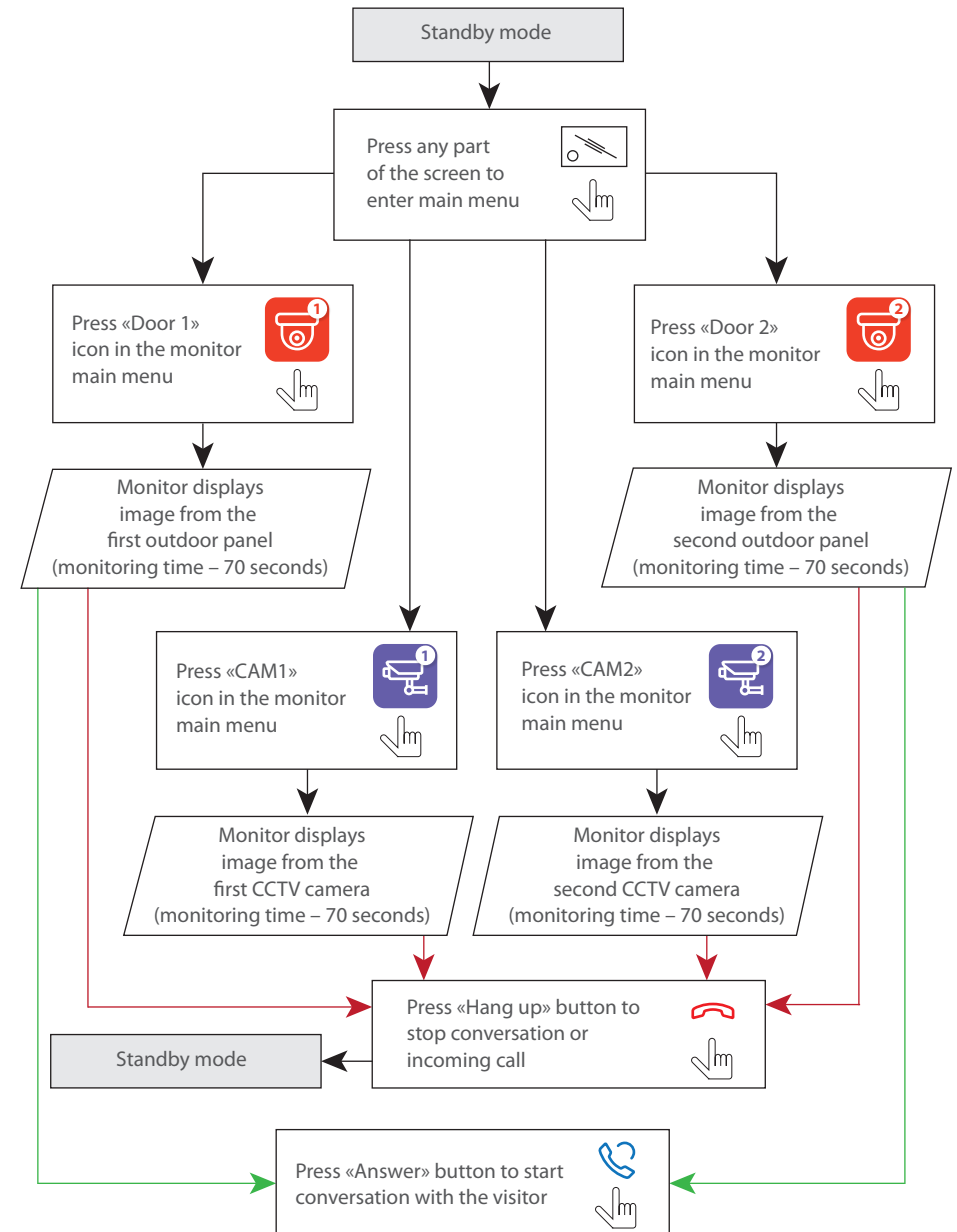
5.1. Incoming call



Notes:

- 1) Monitor will be automatically switched into standby mode if the user doesn't answer the incoming call within 70 seconds;
- 2) Image and sound from the outdoor panel will be active during 25 seconds after the moment user presses  button. It let the user know if the visitor passed through the door.

5.2. Outdoor panels and cameras image view

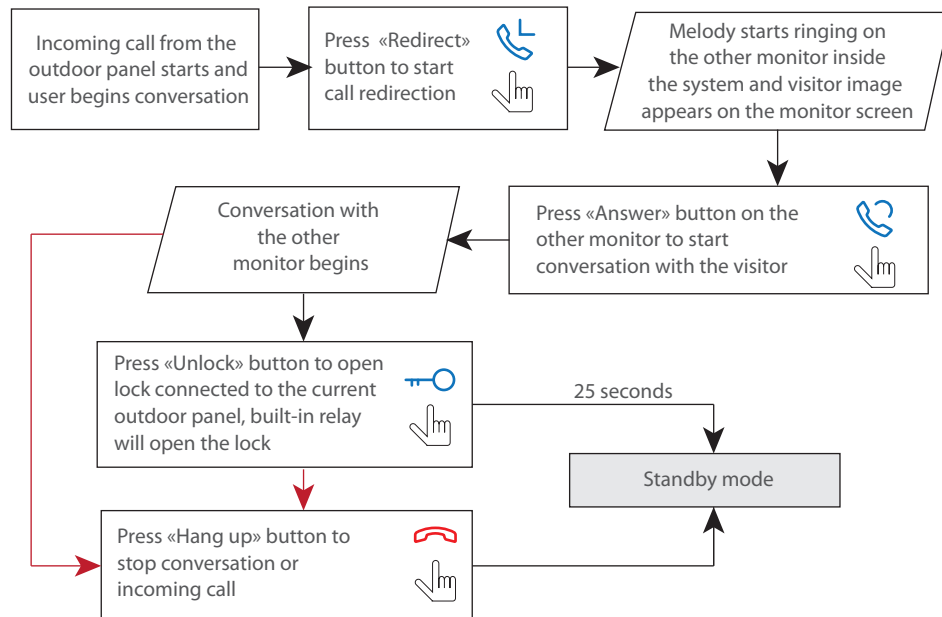


Notes:

- 1) If several monitors are connected into one system, the user can view the image from outdoor panels and cameras on any monitor inside this system. The image will be transferred from the «Master» monitor outdoor panels and cameras to the «Slave» monitors.
- 2) If somebody presses call button on the outdoor panel while monitoring is active then the image from this outdoor panel appears on the monitor screen and call melody starts ringing. Press «Answer» button to start conversation.

5.3. Incoming call redirection

Two monitors connected into one system are used.

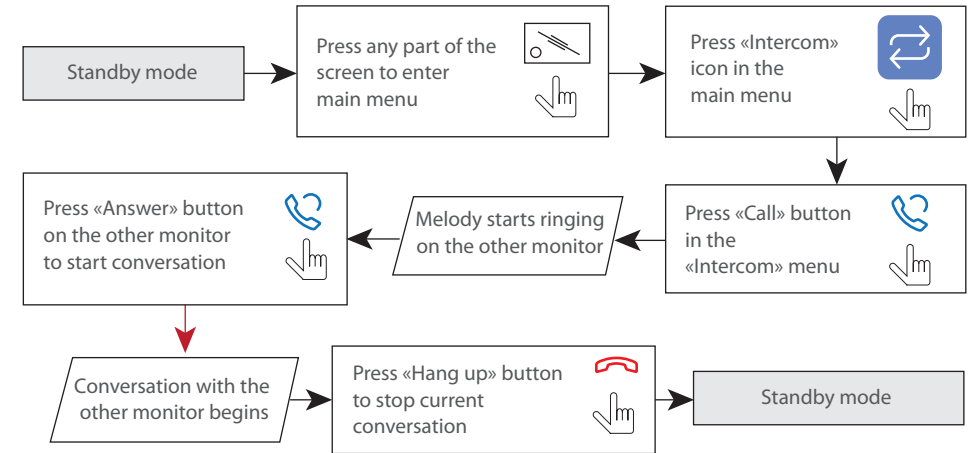


Note:

If incoming call is successfully redirected to the other monitor and other user answers the call then current monitor enters standby mode.

5.4. Intercom

Two monitors connected into one system are used.



Note:

If somebody presses call button on the outdoor panel while intercom is active then the image from this outdoor panel appears on the monitors screens and call melody starts ringing. Press «Answer» button to start conversation with the door panel.

6. Main menu.

In standby mode press any part of the screen to enter main menu. In main menu press any icon to enter corresponding sub menu. Press < button on the bottom right corner of the screen to exit from current sub menu or to exit into standby mode.

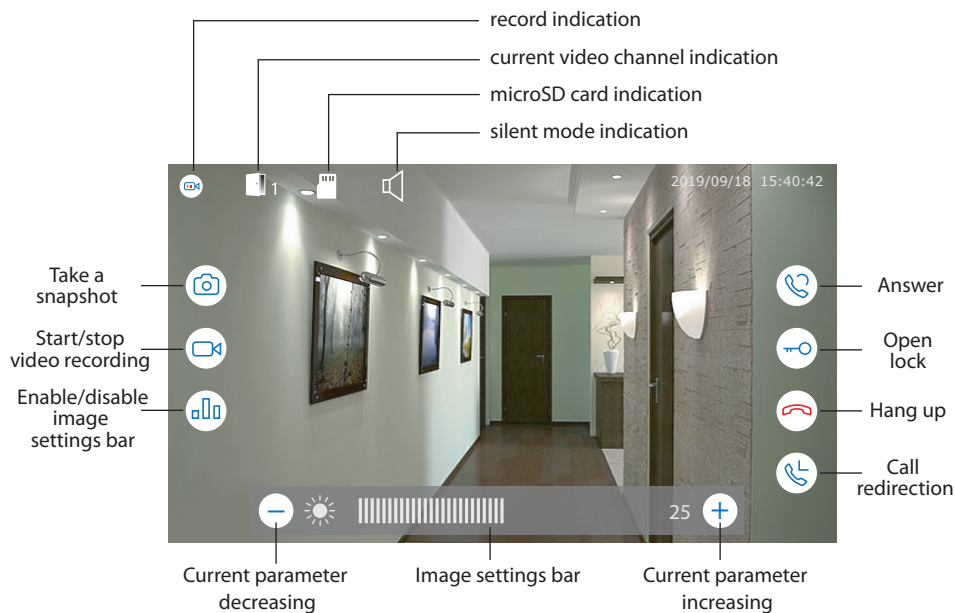
Press «Home screen» icon on the top left corner of the screen to exit from settings menu.

All settings are saved automatically after changing its value.



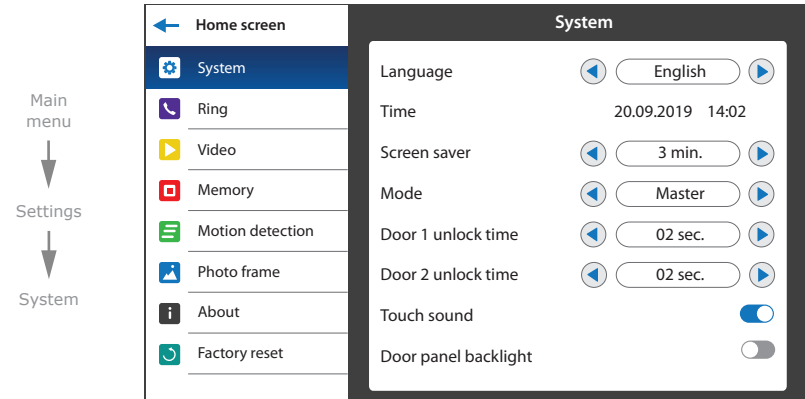
Outdoor panels and cameras monitoring is available directly from the main menu of the monitor by touching corresponding icons:

- Door 1** – door 1 image monitoring;
- Door 2** – door 2 image monitoring;
- CAM 1** – camera 1 image monitoring;
- CAM 2** – camera 2 image monitoring.



7. Settings

7.1. System settings



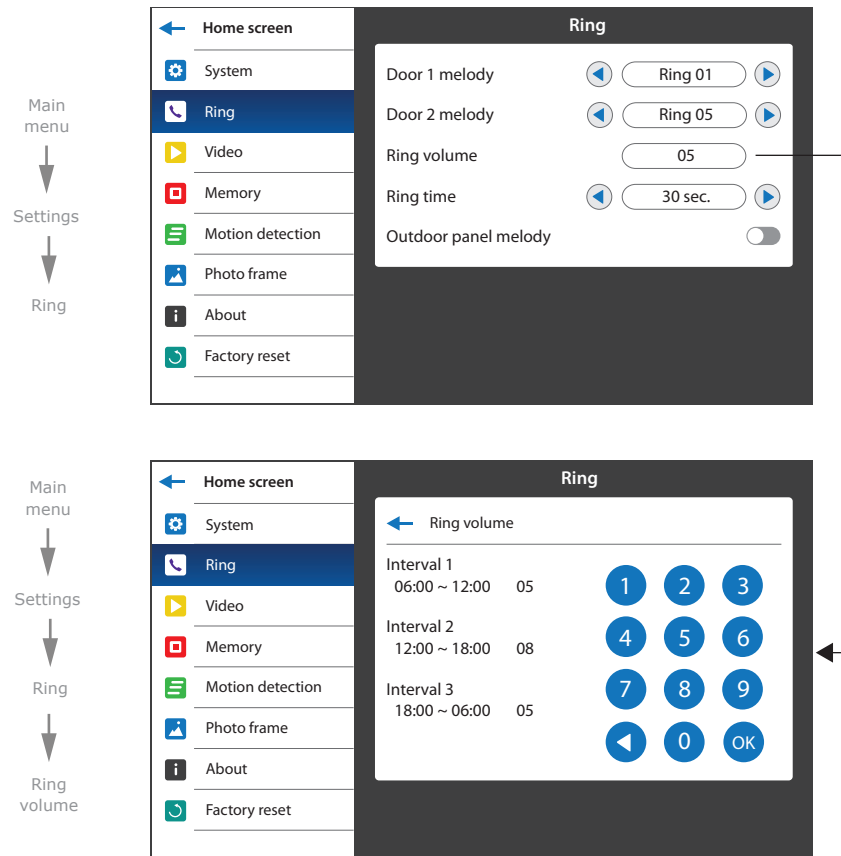
There are eight main bookmarks in settings menu:

- System** – monitor system settings, language setting, time setting, etc.;
- Ring** – ring melody setting, ring volume and ring time settings;
- Video** – outdoor panels and cameras video standard settings;
- Memory** – memory information, internal memory and microSD card formatting;
- Motion detection** – program and hardware motion detection settings;
- Photo frame** – custom user photo viewing settings in standby mode;
- About** – program software version;
- Factory reset** – restore factory default settings.

Settings → System:

- Language** – menu language setting;
- Time** – date and time settings;
- Screen saver** – date and time screensaver display in standby mode;
- Mode** – choose «Master» if you use one monitor in the system or if it is the monitor which all the door panels and CCTV cameras are connected to. Choose «Slave» if there is more than one monitor in the system and no door panels or CCTV cameras are connected to this monitor;
- Door 1 unlock time** – door 1 relay unlocking time, from 1 to 10 sec.;
- Door 2 unlock time** – door 2 relay unlocking time, from 1 to 10 sec.;
- Touch sound** – enable/disable screen touch sound;
- Door panel backlight** – enable/disable door panel call button backlight.

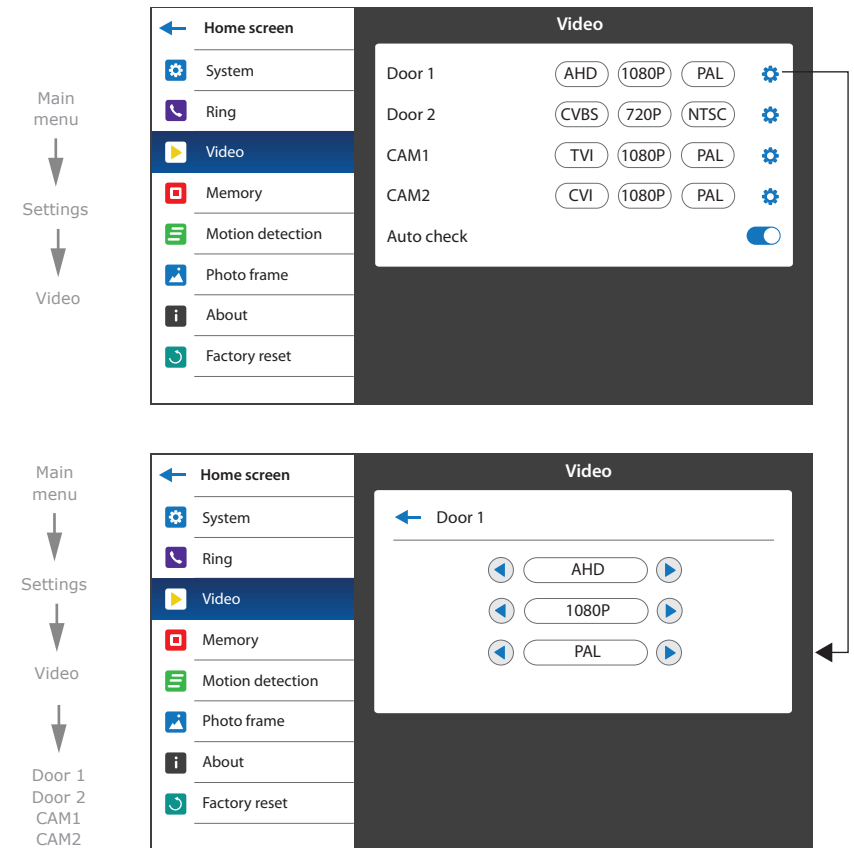
7.2. Ring settings



Settings → Ring

- Door 1 melody** – choose the melody for the first outdoor panel;
- Door 2 melody** – choose the melody for the second outdoor panel;
- Ring volume** – choose volume level (from 00 to 10) depending on the time of a day and also ringing time of the melody;
- Ring time** – melody ringing time from 03 to 45 sec.;
- Outdoor panel melody** – enable/disable calling melody on the outdoor panel.

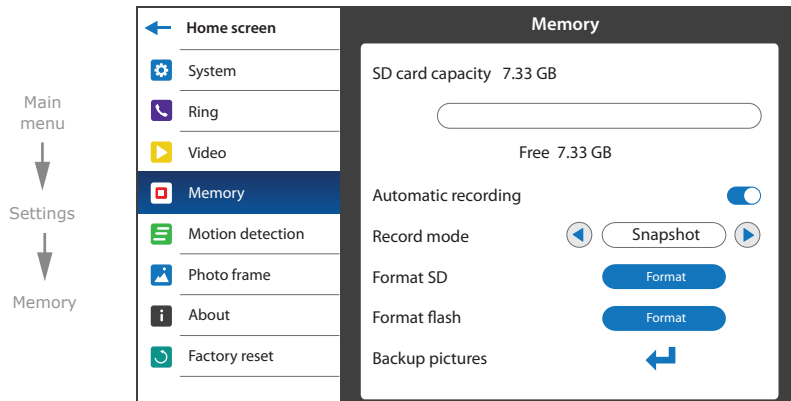
7.3. Video settings



Settings → Video

Here you can manually define type of the video signal for every outdoor panel and camera. Monitor maintains such kind of videostandards: CVBS (PAL or NTSC), AHD, TVI, CVI (1080p or 720p). Also auto check function can be enabled/disabled. If this function is enabled then monitor automatically detects type of the connected video source for every input (outdoor panel or camera) independently.

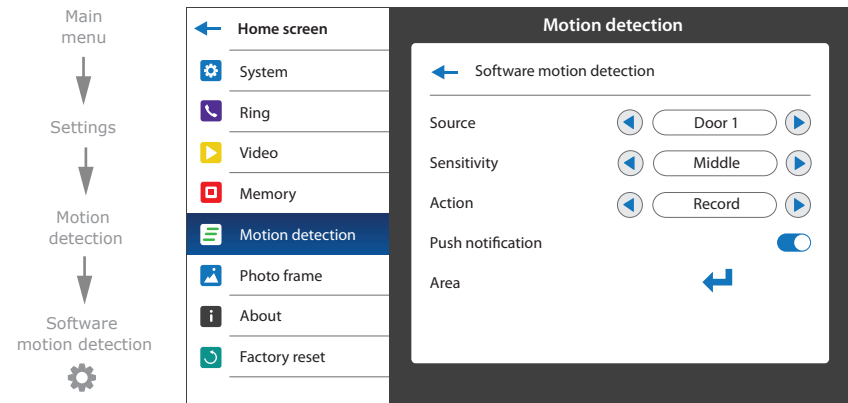
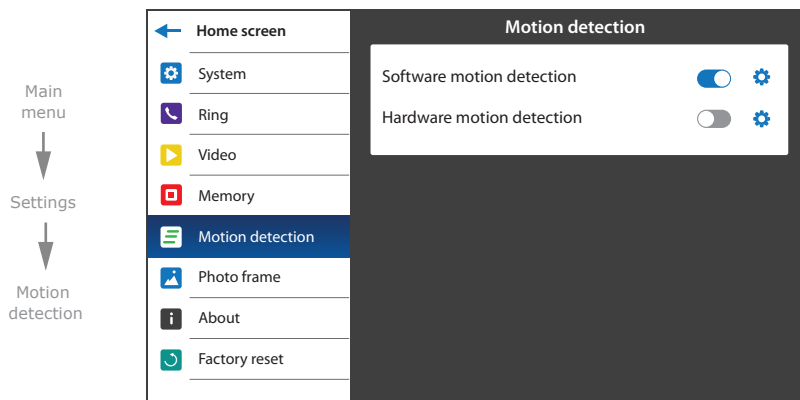
7.4. Memory settings



Settings → Memory

- SD card capacity** – micro SD card capacity and free space information;
- Automatic recording** – enable/disable automatic replacing of an old files if there is a lack of free disk space on microSD card;
- Record mode** – record type when incoming call occurs (take a «Snapshot» or «Record» video);
- Format SD** – micro SD card formatting. Please format microSD card before use it. Recommended to use microSD cards of the 6-th class and above;
- Format flash** – internal memory formatting. Format internal memory for the first time using it;
- Backup pictures** – copy snapshots from internal memory to microSD card.

7.5. Software motion detection settings



Software motion detector can detect motion without any external sensors using any camera image changes with the time. Camera power, that is used for motion detection should be constantly on to let the monitor observe image changes and detect motion.

Software motion detection has a number of settings described below:

Source:

- «Door1» – motion detection on Door1;
- «Door2» – motion detection on Door2;
- «CAM1» – motion detection on CAM1;
- «CAM2» – motion detection on CAM2;

Sensitivity:

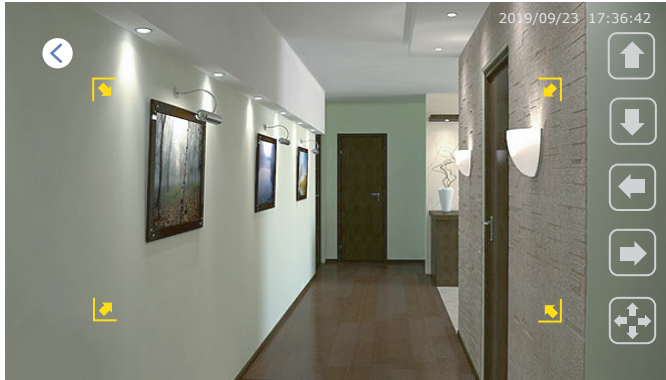
- «Lowest» – the lowest software detector sensitivity;
- «Low» – low software detector sensitivity;
- «Middle» – middle software detector sensitivity;
- «High» – high software detector sensitivity;
- «Highest» – the highest software detector sensitivity;

Action:

- «Snapshot» – save photo if software motion detection occurs;
- «Record» – save video if software motion detection occurs;

Push notification – enable/disable status LED notification if software motion detection occurs.

Area – motion detection area setting defines the part of the image in which motion detection performed;

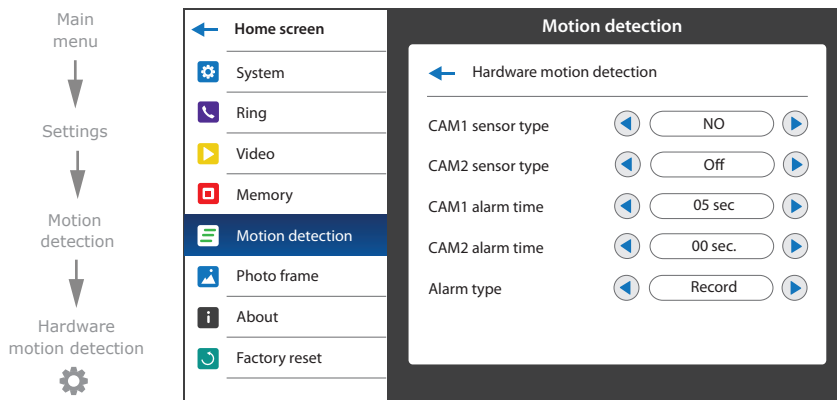


Use up/down/right/left arrow keys to move motion detection area in corresponding direction of the image while mode;

Use right/left arrow keys to move right motion detection area border or up/down arrow keys to move bottom area border while mode;

Press or icon to change between moving and resizing motion detection area modes.

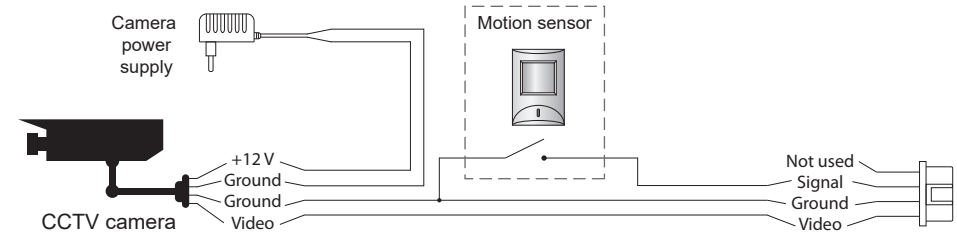
7.6. Hardware motion detection settings



Hardware motion detection can detect motion by means of external device (hardware motion sensor). There are two types of sensors that can be connected to the monitor: sensor with normally opened contacts (NO) and sensor with normally closed contacts (NC).

Depending on the type of sensors that are used appropriate settings must be made in the hardware motion detection settings menu.

External motion sensor connection schematics.



Hardware motion detection has a number of settings described below:

CAM1 sensor type:

- «NO», motion sensor with normally disconnected contacts are used;
- «NC», motion sensor with normally connected contacts are used;
- «Off», motion sensor is not used;

CAM2 sensor type:

- «NO», motion sensor with normally disconnected contacts are used;
- «NC», motion sensor with normally connected contacts are used;
- «Off», motion sensor is not used;

CAM1 alarm time – alarm melody ringing time (from 00 to 10 seconds), activated by CAM1 motion sensor;

CAM2 alarm time – alarm melody ringing time (from 00 to 10 seconds), activated by CAM2 motion sensor;

Alarm type:

- «Snapshot» – save photo if motion detection occurs;
- «Record» – save video if motion detection occurs.

7.7. Photo frame settings

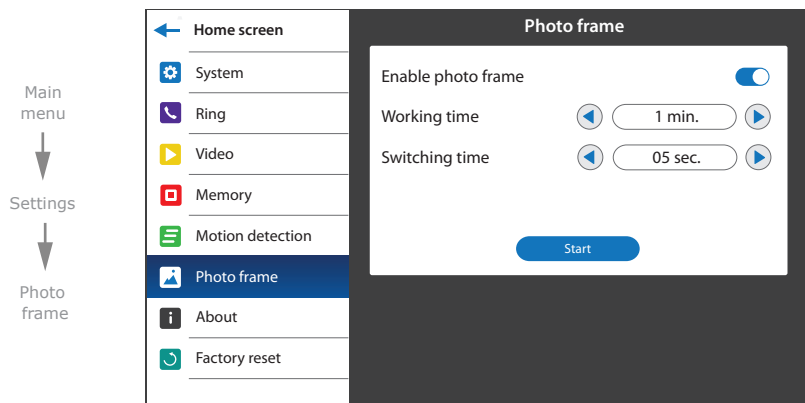
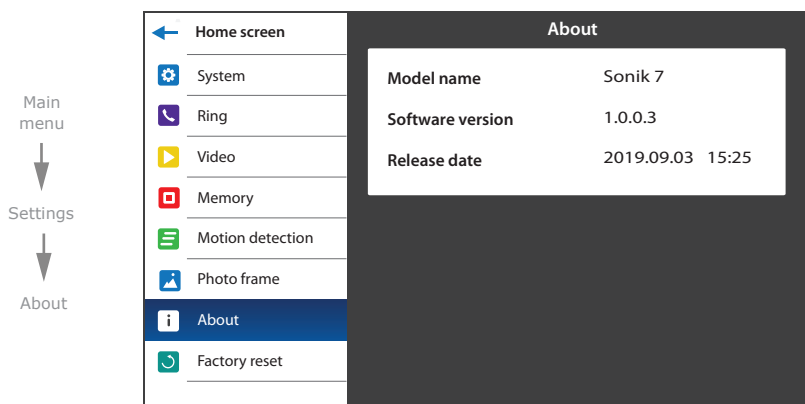


Photo frame function shows custom images on the screen while the monitor is in standby mode. Instructions as for adding custom images into «Frame» folder you can find on page 24 (section 8.4).

Settings → Photo frame

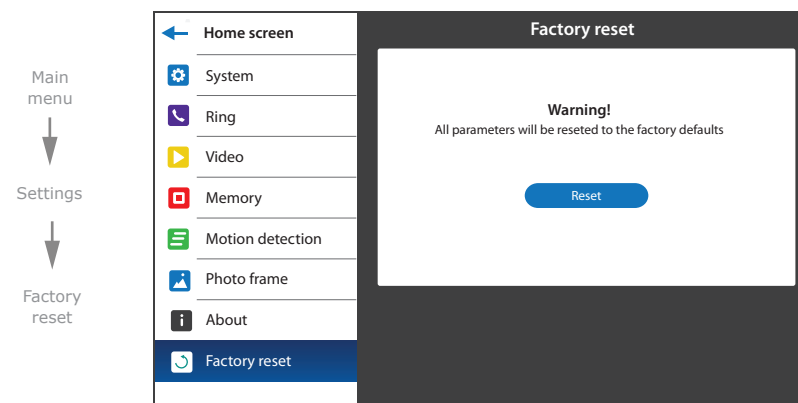
- Enable photo frame** – enable/disable photo frame function in standby mode;
- Working time** – photo frame working time, from 1 to 30 minutes or «Always active»;
- Switching time** – time interval for changing images, from 01 to 05 seconds;
- Start** – start images playback.

7.8. Monitor software version



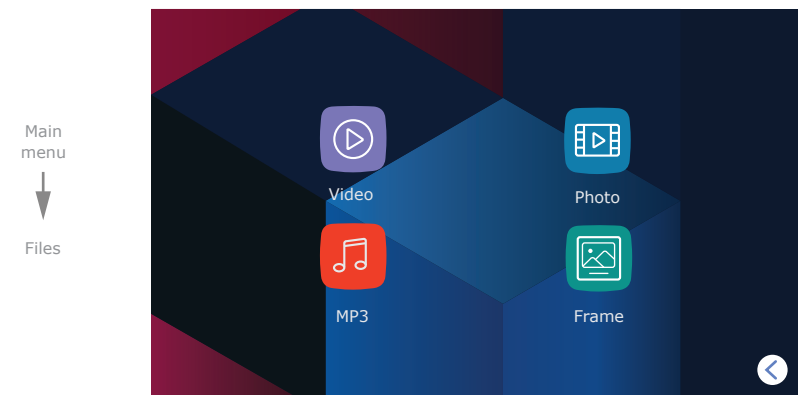
In this bookmark you can find model name, version and date of software release.

7.9. Factory reset



Press «Reset» button to restore factory default settings of the monitor.

8. File manager



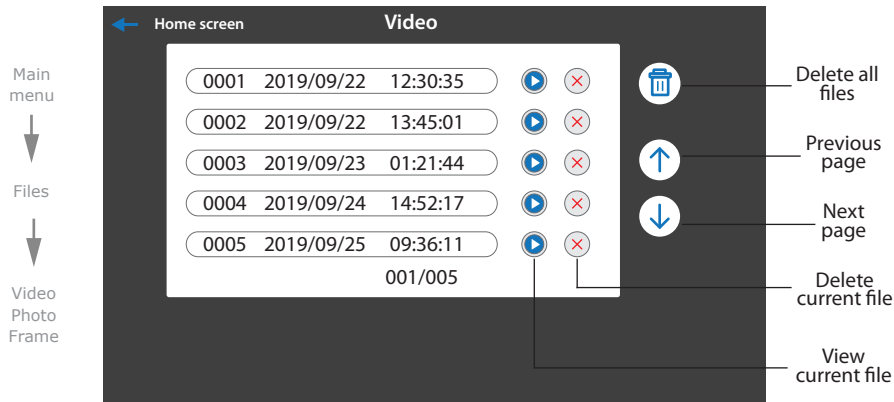
Press «Files» icon in the main menu to enter file manager.

There are four folders available here:

- Video** – video playback;
- Photo** – photo playback;
- MP3** – custom user ringtones;
- Frame** – custom user images.

8.1. Video playback

Press «Files» icon in the main menu then press «Video» folder icon.



Press icon on the right side of the file to start current file playback. Also you can stop playback, delete current file, set up volume or get back to the list of video files using the buttons on the bottom of the screen:

- start/stop playback;
- delete current file;
- increase playback volume;
- decrease playback volume;
- get back to the files list.

8.2. Photo playback

Press «Files» icon in the main menu then press «Photo» folder icon.

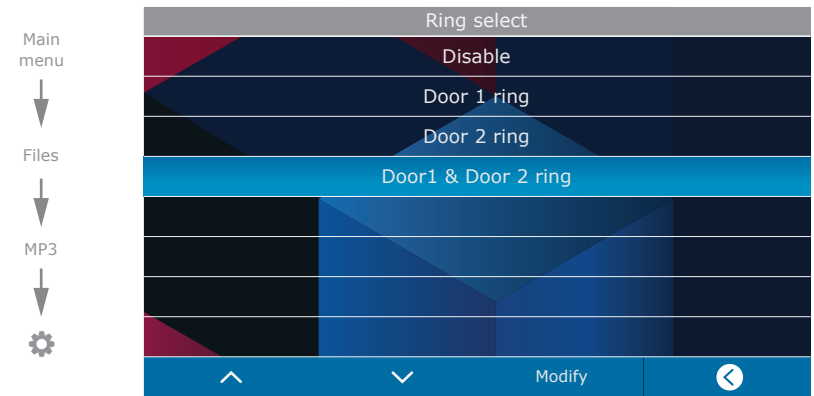
Press icon on the right side of the file to start its viewing. Also you can go to previous or next photo, delete current photo or get back to the list of photos using the buttons on the bottom of the screen:

- previous file viewing;
- next file viewing;
- delete current file;
- get back to the files list.

8.3. Custom MP3 ringtone

Create «RING» folder in the root of microSD card, if it isn't already created by the monitor. Paste MP3 files you would like to use as a ringtone into this folder. File names should have only English letters and figures in its names and its quantity should not exceed 8 symbols to be visible on the monitor.

Insert microSD card into the monitor and press «Files» icon in the main menu. Then press «MP3» icon to enter to the «MP3» folder, choose the file you would like to use as a ringtone and press icon near its name. In a new window choose the number of the outdoor panel to apply current melody:



8.4 Custom user images playback

Create «FRAME» folder in the root of microSD card, if it isn't already created by the monitor. Paste JPG images you would like to view into this folder. File name should have only English letters and figures in its name and its length should not exceed 8 symbols to be visible on the monitor .



Insert microSD card into the monitor and press «Files» icon in the main menu. Then press «Frame» icon to enter to the «Frame» folder and press icon on the right side of the file to start viewing.

Note that JPG images resolution should not exceed 2560×1440 pixels. Other image formats and resolutions are not supported.

You can go to previous or next photo, delete current photo or get back to the list of photos using the buttons on the bottom of the screen in the same way as in photo playback mode.




9. Silent mode


Press «Silence on» or «Silence off» in the main menu to enable or disable silent mode. In that mode there is no ringtone of incoming call on the monitor. In case of incoming call only image appears on the screen.

Press  button to start conversation with the visitor or press  button to hang up the call.

10. Manual and automatic recording

User can take manual snapshots or record video during outdoor panel or CCTV camera monitoring.

Press  icon on the left side of the monitoring screen to start manual recording then press  icon again to stop recording. Blinking  indicator in the top left corner of the screen shows that video recording is in progress.

Press  icon on the left side of the monitoring screen to take a snapshot.




Automatic recording occurs every time anybody presses outdoor panel call button.

Depending on the «Memory» → «Record mode» setting, snapshot or video recording will be performed, see page 17 (section 7.4).


Note:




Video can be recorded only if micro SD card is installed into the monitor's slot, otherwise only snapshots can be stored in the monitor internal memory.

11. Image and volume settings

While outdoor panel or CCTV camera image monitoring press  icon on the left side of the screen to enable image settings bar. Press  or  icons to increase or decrease image brightness.

Press  icon again to go to the contrast setting and one more time to get to the color setting.

After contrast setting press  icon one more time to disable image settings bar.

While talking with the visitor press  icon on the left side of the screen to enable talking volume control bar. Press  or  icons to increase or decrease talking volume.

While incoming call from outdoor panel press  icon on the left side of the screen to enable ringing volume control bar. Press  or  icons to increase or decrease ringing volume.

12. Limited warranty

Manufacturer guarantees product normal functioning during the warranty period if the user keeps all safety instructions described in that manual.

Warranty period is 12 months from the moment of the product purchasing (warranty period could be extended up to 24 months or more, depending on the local regulations).

Warranty period allows user to make guarantee repair in cases when normal functioning of the product was violated by the fault of manufacturer and the user has not offend transporting, installation and working conditions.

This limited warranty does not cover any damage to the product that results from improper installation, accident, abuse, misuse, natural disaster, insufficient or excessive electrical supply, abnormal mechanical or environmental conditions, or any unauthorized disassembly, repair or modification.

Warranty void in such cases:

- the product was damaged by the fault of the customer;
- the product wasn't properly installed according recommendations from the manual;
- the sticker on the backside of the product was broken;
- the product was not used for its intended function.

This limited warranty covers only repair, replacement, refund or credit for defective products, as provided above. Manufacturer is not liable for, and does not cover under warranty, any damages or losses of any kind whatsoever resulting from loss of, damage to, or corruption of, content or data or any costs associated with determining the source of system problems or removing, servicing or installing products. This warranty excludes third party software, connected equipment or stored data. Manufacturer is therefore not liable for any losses or damage attributable to third party software, connected equipment or stored data.

In the event a product has been discontinued, manufacturer shall either repair the product, offer to replace it with a comparable product or provide a refund at the lesser of the purchase price or the product's current value.

Repaired or replacement products will continue to be covered by this limited warranty for the remainder of the original warranty term.