

SERIES UNIQUE
DIRECT

XR-30IP

IP converter



User manual

Thank you for the
choice of our equipment

SLINEX

{Design. Uniqueness. Innovation}

Attention!



As a result of continuous upgrades and functionality improvements, technical characteristics of the device can be changed without any preliminary declaration. This manual can contain some inaccuracy or misprint. The owner reserves the right to make corrections to the information described in the user manual and device package. The last revision of this manual is available on www.slinex.com

Safety instructions

Read and keep that manual.

The device installation process should be carried out by the qualified specialists.

Use the device from the -10 °C to +55 °C, always keep it within that temperature range.

Installation surface should be free from vibration and impact influence.

Keep this device far from open sources of heat, such as radiators, heaters, and ovens.

The device can be installed near other electronic equipment in case if the temperature of the environment does not exceed previously mentioned range.

The device should be protected from the direct influence of the natural phenomena, such as direct sunlight, rain or snow.

Don't use aggressive or abradant detergent for the device surface cleaning.

Use soft wet cloth or tissue to remove strong dirt.

Don't overpower outlets. It can cause fire or electric shock.

Nature protection



Don't throw away the device with other industrial or nutritive trash if you see that symbol. Some regions have separation and recycling systems for the electronic equipment. Connect with local authorities to receive information about recycling of electronic equipment for your region.

Rights and limitation of liability

All rights reserved. Any part of that document can not be published in any form, translated into other languages or reproduced in any way including electronic or mechanical.

Document recording and copying is strictly denied without owner permission.

Table of contents

1. Device functions.....	2
2. Package.....	3
3. Specification.....	3
4. Description.....	4
5. Installation.....	5
5.1 Cable requirements.....	5
5.2 Schematic diagrams.....	6
5.3 Unit mount.....	7
6. Software.....	8
6.1 Wired network connection steps.....	8
6.2 Wireless Wi-Fi network connection steps.....	10
6.3 Notification messages.....	13
7. Limited Warranty.....	14

1. Device functions

XR-30IP main function is to connect 4-wire door panels to the local network and internet. This function enables to answer incoming calls from the door panel, view the image from the door camera, talk to visitors and open lock from mobile devices, tablets or personal computers.

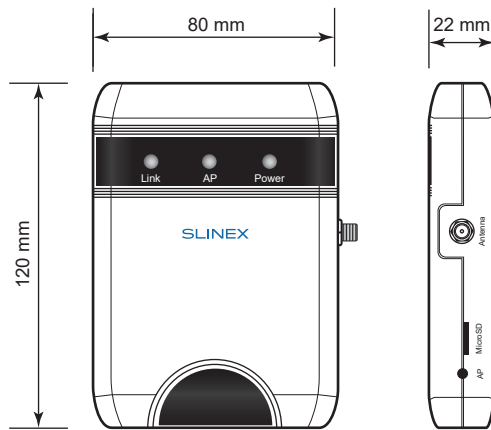
One door panel and door monitor can be connected to XR-30IP converter. It provides a possibility to use this converter in systems where door panel and monitor are already installed for more convenient communication with the visitors.

XR-30IP converter can be connected to the local network by wired (twisted pair) or wireless (Wi-Fi) connection.

1. Package

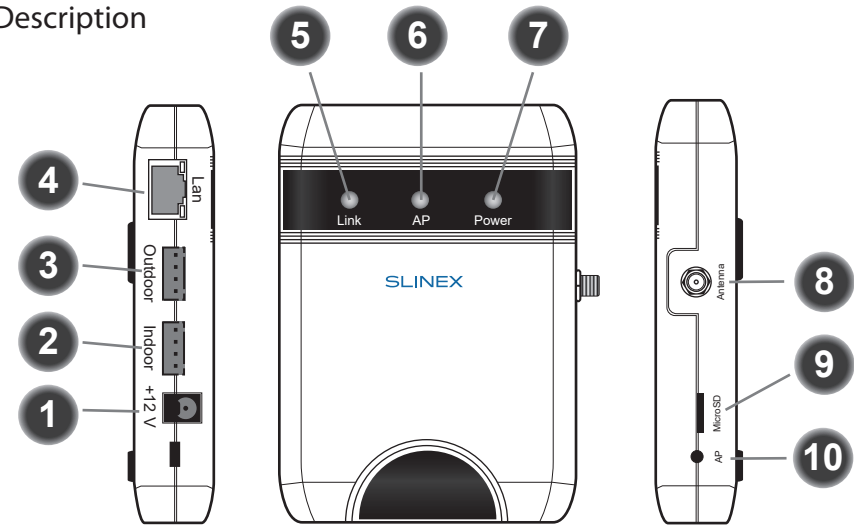
- XR-30IP converter – 1 pc.
- Power supply – 1 pc.
- Connection wires – 2 pcs.
- Mounting screws and nuts – 1 pkg.
- User manual – 1 pc.

2. Specification



Video system	PAL/NTSC
Power consumption (standby mode)	2 W
Power consumption (working mode)	5 W
Power supply	External, +12 V, 1 A
Network interface	Ethernet 10/100M, Wi-Fi
Memory	MicroSD card slot, up to 32GB
Working temperature	-10...+55 °C
Mount type	Surface mount
Size	80×120×22 mm

4. Description



1	DC power supply input +12 V, 1 A
2	Indoor monitor plug
3	Outdoor panel plug
4	Local area network RJ-45 plug (10/100M base T Ethernet)
5	Network LED. If device is connected to wired or wireless Wi-Fi network then LED is active.
6	«Access point» mode LED. If «Access point» mode is active then LED is blinking.
7	Power LED. If the device is powered up then LED is active.
8	SMA plug for the external antenna connection.
9	MicroSD card slot
10	«Access point» mode button. Push and hold that button until «Access point» mode LED becomes active. «Access point» mode will be activated after reboot for 10 minutes.

5. Installation

5.1 Cable requirements

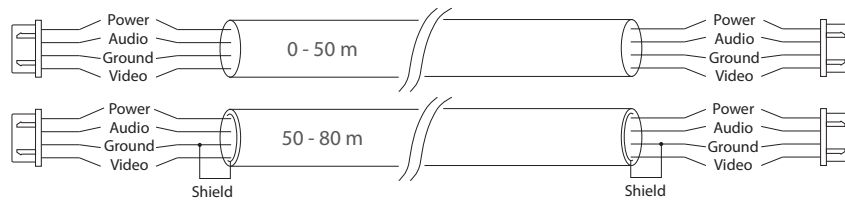
Disconnect all power cables before device installation.

XR-30IP connects into breakup between door monitor and door panel.

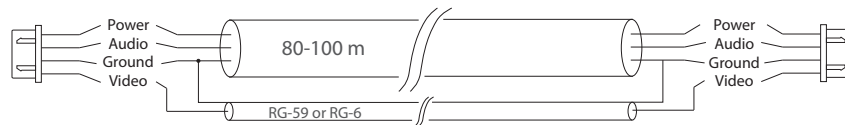
This device can be connected with such cable types depends on the distance between door monitor and door panel:

a) Use 4-wire cable with such parameters:

- distance up to 25 meters use a cable with 0,22 mm² square of one wire;
- distance 25 to 50 meters use a cable with 0,41 mm² square of one wire;
- distance 50 to 100 meters use a cable with 0,75 mm² square of one wire.

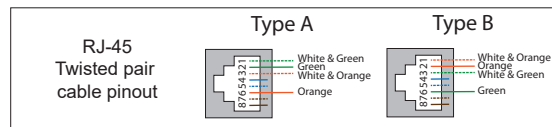


b) If the distance between door monitor and door panel is between 80 and 100 meters then use a 3-wire cable with 0,75 mm² square of one wire and RG-59 or RG-6 coaxial cable for the video signal.



c) Local network connection should be made with shielded or non-shielded twisted pair:

- distance up to 25 meters non-shielded twisted pair can be used;
- distance 25 to 100 meters shielded twisted pair should be used.



Also, wireless Wi-Fi connection can be used for the local network. In that case, there is no need to use twisted pair cable. Instead of twisted pair cable, use Wi-Fi antenna connected to the SMA plug of the IP converter.

5.2 Schematic diagrams

Diagram 1. XR-30IP door panel and monitor connection.

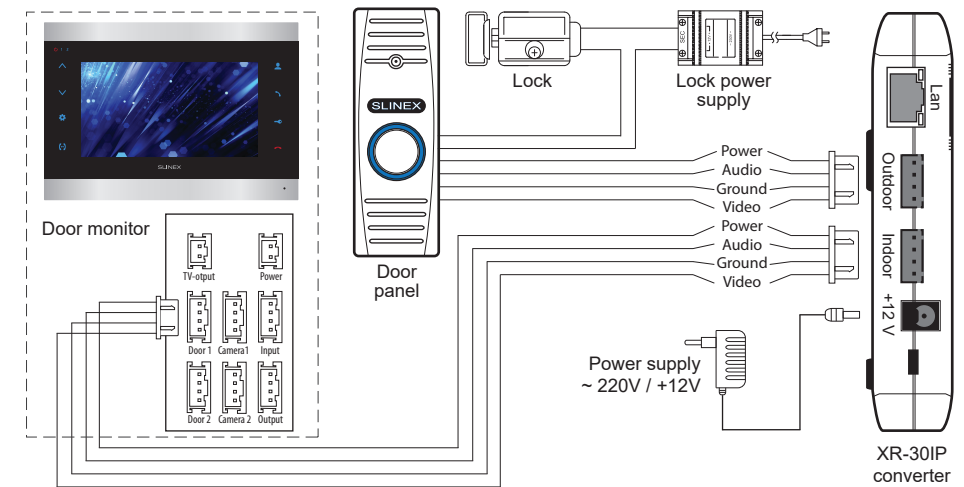


Diagram 2. XR-30IP network interface connection by the wired method.

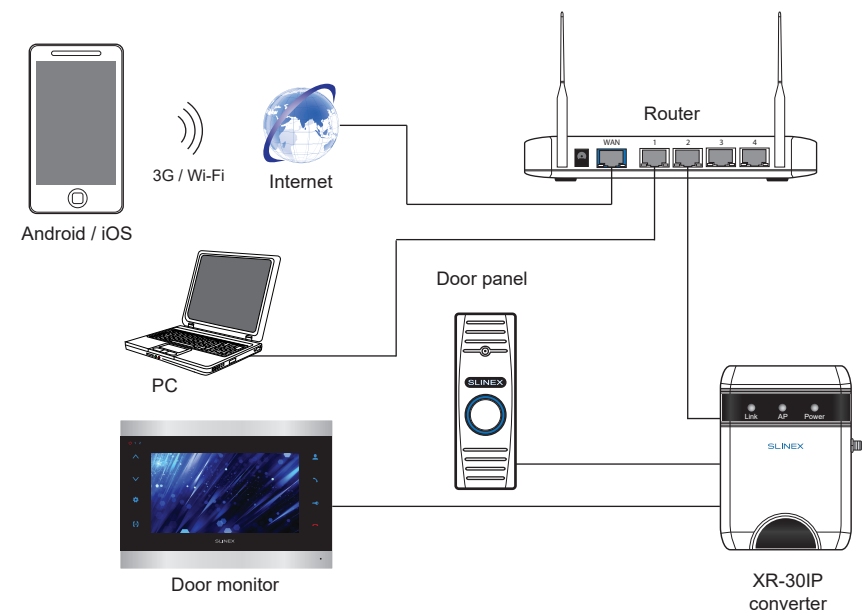
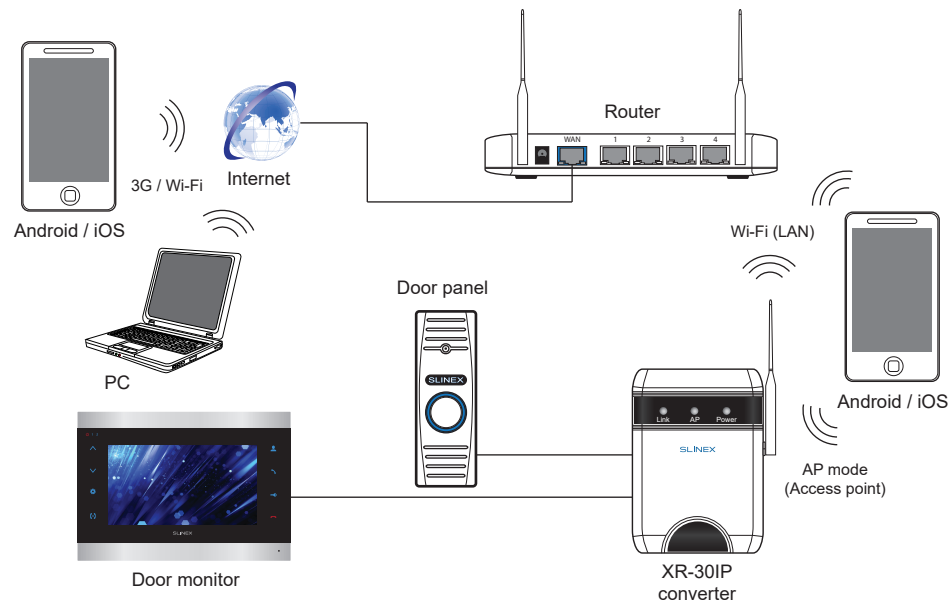
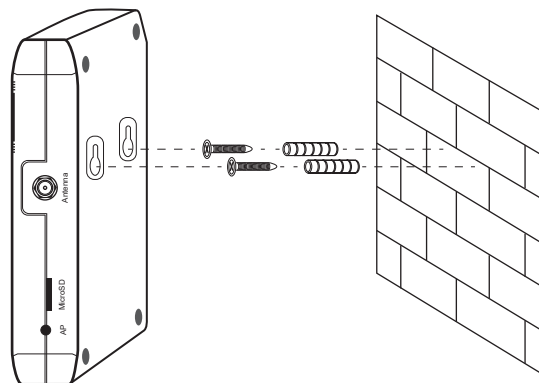


Diagram 3. XR-30IP network interface connection by wireless method.



5.3 Unit mount

- 1) Mark and drill two holes in the wall.
- 2) Take two nuts from the kit and hammer them into the drilled holes.
- 3) Fix XR-30IP on the wall by the screws from the kit.
- 4) Connect all communication wires to the IP converter.



6. Software

6.1 Wired network connection steps

Use twisted pair CAT5 or CAT6 cable to connect XR-30IP converter to the local network according to the diagram on page 6.

Wired network setup includes next steps:

- 1) Enter «GooglePlay» (for Android) or «AppStore» (for iOS) and search for «Slinex» application, then install this application on your mobile device.
- 2) Connect mobile device to the local network, which is video door station connected.
- 3) Run «Slinex» application on your mobile device and push icon to add a new device.
- 4) Push «Click here for connected wired/wireless device» button, then push «LAN search» button.
- 5) When new device have been found, choose its number in the list and fill in the device information:

Name: enter device name in the list

UID: unique identification number of the device

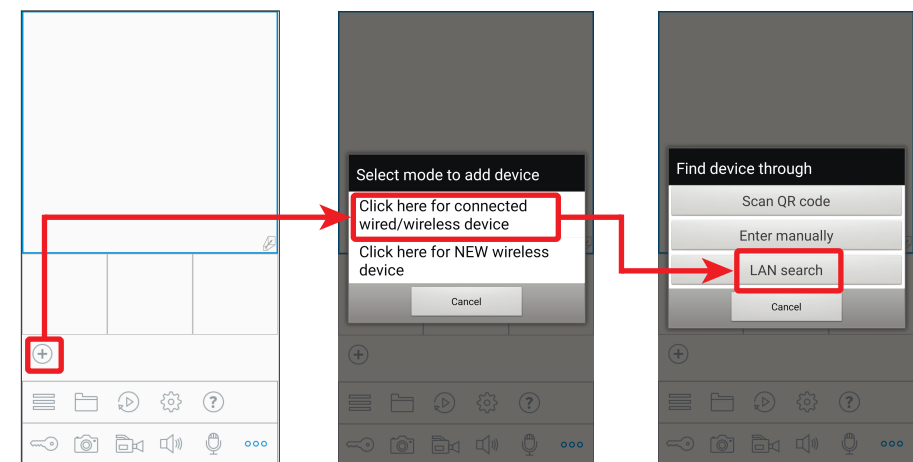
User: **Admin** (by default)

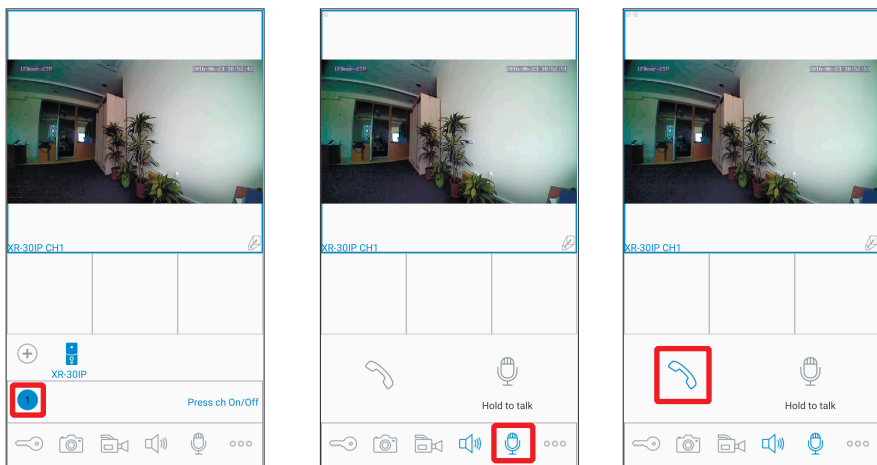
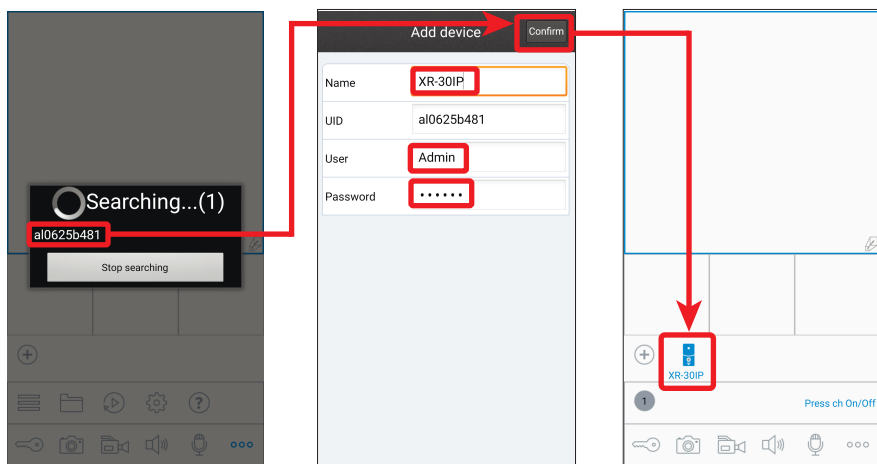
Password: **888888** (by default)

then push «Confirm» button.

6) Device will be added to the bar in the middle part of the screen. You can also push alarm notification on or off by the blue switcher in the devices list («Switch ON/OFF notification»).

7) If you want to view the image from the door station press its icon on the bar and then press first channel icon to start monitoring mode. Press first channel icon again to stop monitoring mode.





- add new device
- door unlock
- snapshot
- start/stop video recording
- turn on the sound from the door station
- press again to turn off the sound
- + – start conversation
- press again to stop conversation
- additional settings
- devices list
- local snapshots and video
- remote snapshots and video
- settings
- help

6.2 Wireless Wi-Fi network connection steps

Wireless Wi-Fi network connection should be made according to Diagram 3.

Wireless network setup includes next steps:

- 1) Enter «Google Play Market» (for Android) or «App Store» (for iOS) and search for «Slinex» application, then install this application on your mobile device.
- 2) Run «Slinex» application on your mobile device and press icon to add a new device.
- 3) Press «Click here for NEW wireless device» button.
- 4) Enter into «Access point» mode: press and hold «AP mode» button on the right side of the converter until blue AP LED will be activated. Then release «AP mode» button and converter will be rebooted. After reboot converter will enter «Access point» mode. Press «NEXT» button on the mobile device screen to go to the next step.
- 5) Wait for a minute while XR-30IP connects your mobile device. On the Android devices, the connection will be established automatically. On the iOS device user should connect to the door station manually. Press «Wi-Fi settings» on the iOS device to view networks list. Find the network name with UID number of the converter and connect it. Then press «NEXT» button.
- 6) The list of the available wireless networks will be displayed in the next window. Choose the network which is the IP converter will be connected and enter the password if it is needed. After that, the converter will be restarted and after a minute it will be connected to the chosen network.
- 7) Press «NEXT» button, to add the IP converter to the device list. Fill in the device information:

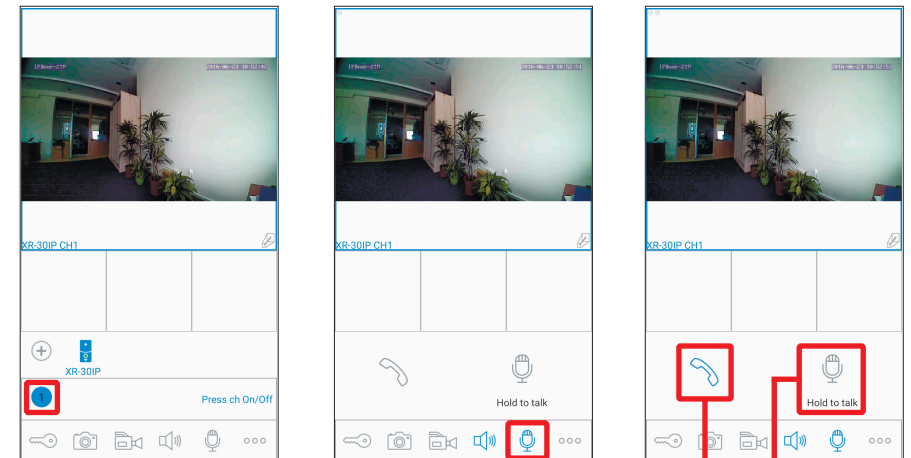
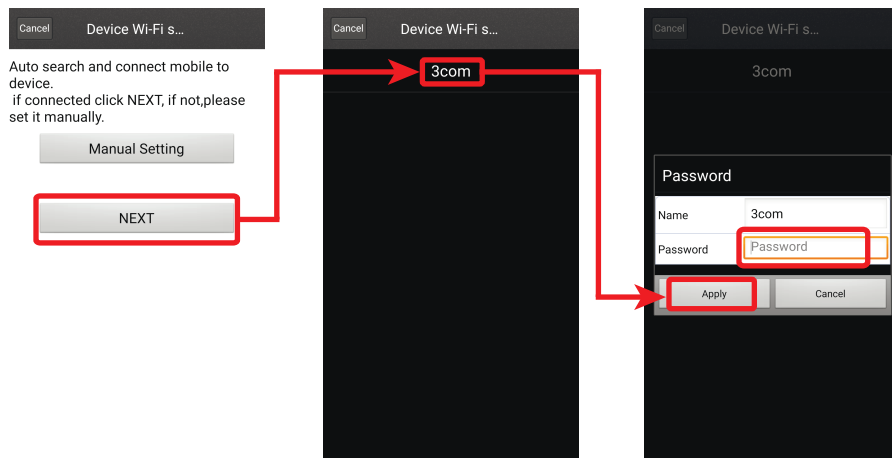
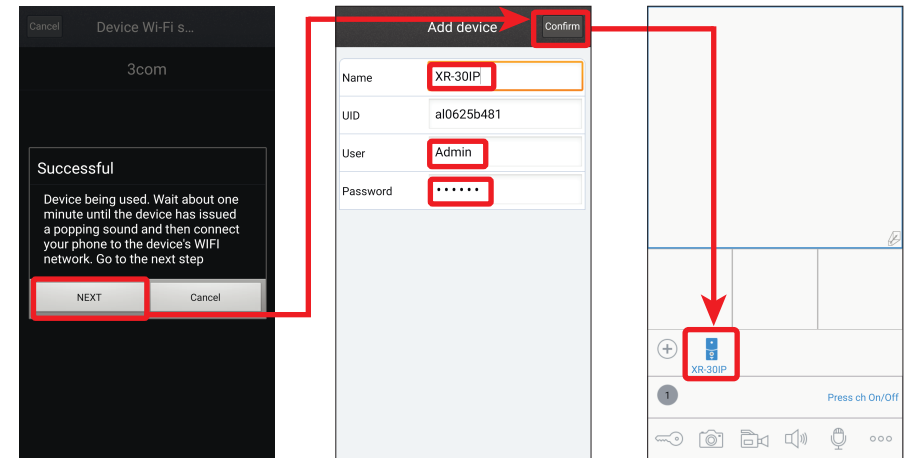
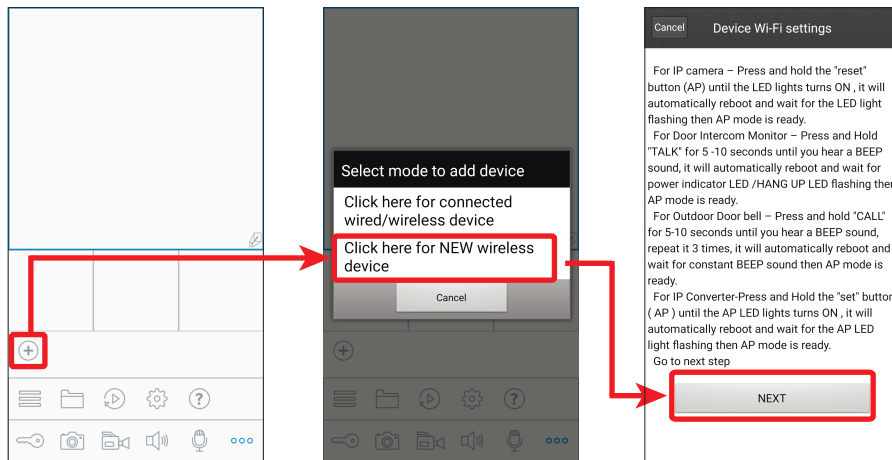
- Name: enter device name in the list
- UID: unique identification number of the device (don't change this number)
- User: **Admin** (by default)
- Password: **888888** (by default)

then push «Confirm» button.

- 8) Device will be added to the bar in the middle part of the screen. You can also switch alarm notification on or off by the blue switcher in the devices list («Switch ON/OFF notification»).
- 9) If you want to view the image from the door station press its icon on the bar and then press first channel icon to start monitoring mode. Press first channel icon again to stop monitoring mode.



Note:

If XR-30IP converter has been entered into «Access point» mode and wasn't connected to any wireless network during 10 minutes then after that time it will be returned to the normal working mode.

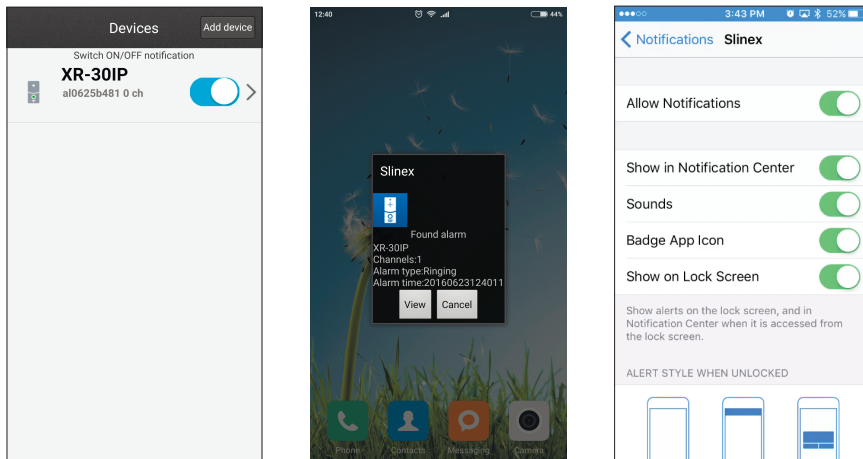


6.3 Notification messages

Check mobile device and XR-30IP converter both connected to the Internet.

Start «Slinex» application on the mobile device and press  button on the bar to display additional settings menu. Then press  button to enter device list. On the right side from the device name you will see the switch. If it has blue color then alarm notification is enabled. If it has gray color then alarm notification is disabled.

While alarm notification is enabled the user will receive the alarm message if someone presses the call button on the door station. Press «View» button to talk with the visitor or «Cancel» button to stop alarm



Note:

For the iOS mobile devices, go to «Settings» → «Notifications», then click «Slinex» icon and make sure that all the notification are turned on:

- Allow notifications;
- Show in Notification Center;
- Sounds;
- Badge App Icon;
- Show on Lock Screen.

7. Limited warranty

Manufacturer guarantees product normal functioning during the warranty period if the user keeps all safety instructions described in that manual.

Warranty period is 12 months from the moment of the product purchasing (warranty period could be extended up to 24 months or more, depending on the local regulations).

Warranty period allows user to make guarantee repair in cases when normal functioning of the product was violated by the fault of manufacturer and the user haven't offend transporting, installation and working conditions.

This limited warranty does not cover any damage to the product that results from improper installation, accident, abuse, misuse, natural disaster, insufficient or excessive electrical supply, abnormal mechanical or environmental conditions, or any unauthorized disassembly, repair or modification.

Warranty void in such cases:

- the product was damaged by the fault of the customer;
- the product wasn't properly installed according recommendations from the manual;
- the sticker on the backside of the product was broken;
- the product was not used for its intended function.

This limited warranty covers only repair, replacement, refund or credit for defective products, as provided above. Manufacturer is not liable for, and does not cover under warranty, any damages or losses of any kind whatsoever resulting from loss of, damage to, or corruption of, content or data or any costs associated with determining the source of system problems or removing, servicing or installing products. This warranty excludes third party software, connected equipment or stored data. Manufacturer is therefore not liable for any losses or damage attributable to third party software, connected equipment or stored data.

In the event a product has been discontinued, manufacturer shall either repair the product, offer to replace it with a comparable product or provide a refund at the lesser of the purchase price or the product's current value.

Repaired or replacement products will continue to be covered by this limited warranty for the remainder of the original warranty term.