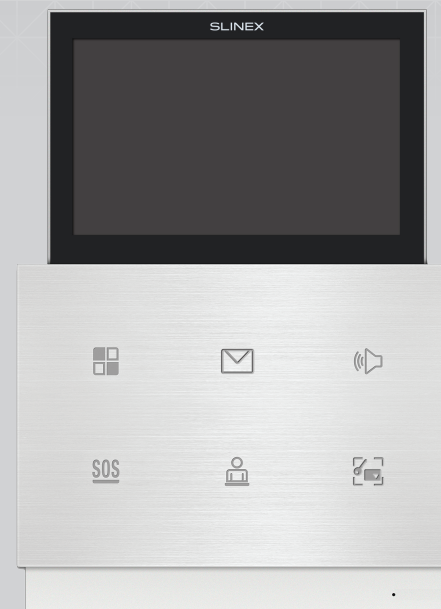
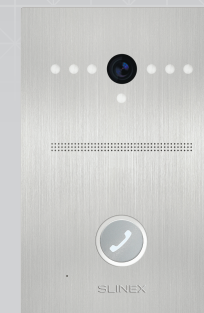


IP video intercom kit
with call redirection
to the mobile app



Zian



Uma



XR-30IP



User manual

Thank you for the
choice of our equipment

SLINEX

{ Design. Uniqueness. Innovation }

Attention!



As a result of continuous upgrades and functionality improvements, technical characteristics of the device can be changed without any preliminary declaration. This manual can contain some inaccuracy or misprint. The owner reserves the right to make corrections to the information described in the user manual and device package. The last revision of this manual is available on www.slinex.com

Safety instructions

Read and keep that manual.

The device installation process should be carried out by the qualified specialists.

Use the device from the -10 °C to +55 °C (14 °F to 131 °F), always keep it within that temperature range.

Installation surface should be free from vibration and impact influence.

Keep this device far from open sources of heat, such as radiators, heaters, and ovens.

The device can be installed near other electronic equipment in case if the temperature of the environment does not exceed previously mentioned range.

The device should be protected from the direct influence of the natural phenomena, such as direct sunlight, rain or snow.

Don't use aggressive or abradant detergent for the device surface cleaning.

Use soft wet cloth or tissue to remove strong dirt.

Don't overpower outlets. It can cause fire or electric shock.

Nature protection



Don't throw away the device with other industrial or nutritive trash if you see that symbol. Some regions have separation and recycling systems for the electronic equipment. Connect with local authorities to receive information about recycling of electronic equipment for your region.

Rights and limitation of liability

All rights reserved. Any part of that document can not be published in any form, translated into other languages or reproduced in any way including electronic or mechanical.

Document recording and copying is strictly denied without owner permission.

Table of contents

1. Zian indoor monitor	3
1.1 Package.....	3
1.2 Specification.....	3
1.3 Description	4
2. Uma outdoor panel.....	5
2.1 Package.....	5
2.2 Specification.....	5
2.3 Description	6
3. XR-30IP converter.....	7
3.1 Package.....	7
3.2 Specification.....	7
3.3 Description	8
4. VZ-50 adapter.....	9
4.1 Package.....	9
4.2 Specification.....	9
4.3 Description	10
5. Installation.....	11
5.1 Cable requirements.....	11
5.2 Schematic diagrams.....	11
6. XR-30IP software settings.....	13
6.1 Notification messages	15
7. Zian operation	16
7.1 Incoming call	16
7.2 Outdoor panel image view.....	17
7.3 Monitor menu	17
8. Limited Warranty.....	18

1. Zian indoor monitor

1.1 Package

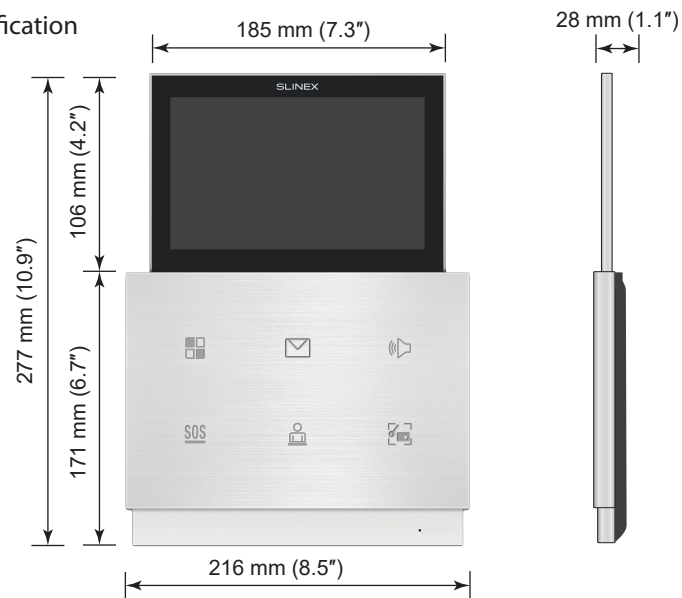
Zian indoor monitor – 1 pc.

Wall mounting bracket – 1 pc.

Connection wires – 7 pcs.

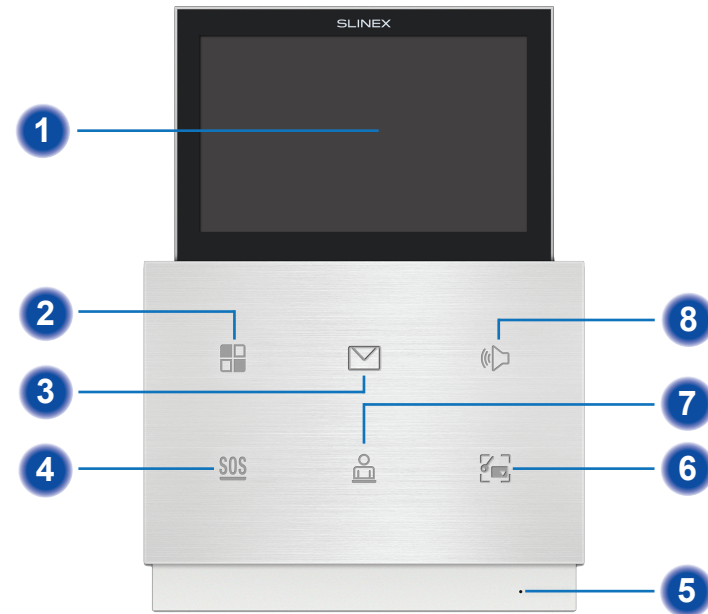
Mounting screws and wall anchors – 1 pkg.

1.2 Specification



Screen	7", color TFT with touch screen
Resolution	800×480 pixels
Standby mode power consumption	3 W
Working mode power consumption	13 W
Power	External power supply, +13 V
Mounting type	Surface mount
Size	216×277×28 mm (8.5×10.9×1.1 inch)
Working temperature	-10...+55 °C (+14...+131 °F)

1.3 Description



1	Display
2	«Settings» / «Open display» button
3	«Messages» button
4	SOS / Alarm button
5	Microphone
6	«Open / hide display» button
7	«Monitor» button
8	«Answer» button

2. Uma outdoor panel

2.1 Package

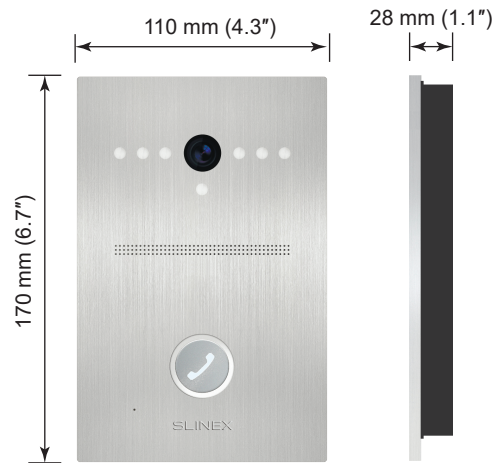
Outdoor panel – 1 pc.

Flush mounting box – 1 pc.

Connection wires – 3 pcs.

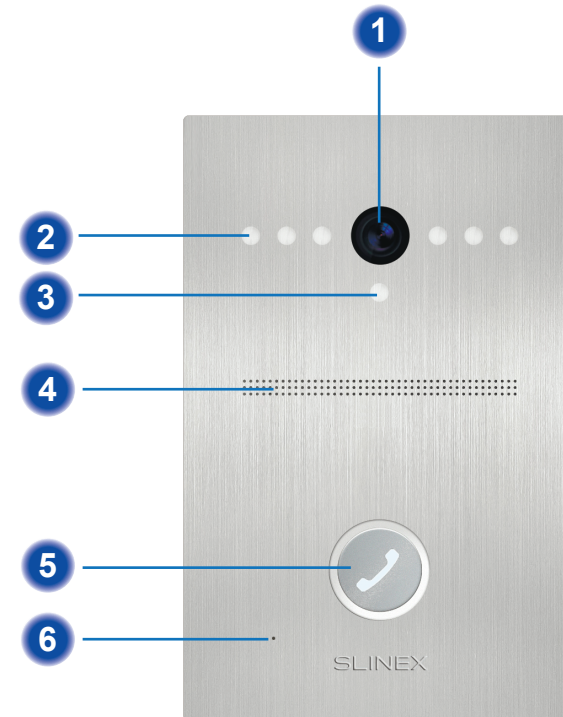
Mounting key, screws and wall anchors – 1 pkg.

2.2 Specification



Sensor type	1/3" CCD
Resolution	800 TV-lines
View angle	45°
Night backlight	Infrared LED's. 1,5 m distance
Power	+13V from the monitor
Working mode power consumption	5 W
Mounting type	Flush mount
Panel dimensions	110×170×28 mm (6.7×4.3×1.1 inch)
Installation hole dimensions	96×156×34 mm (3.78×6.14×1.35 inch)
Working temperature	-40 ... +65 °C (-40...+149 °F)

2.3 Description



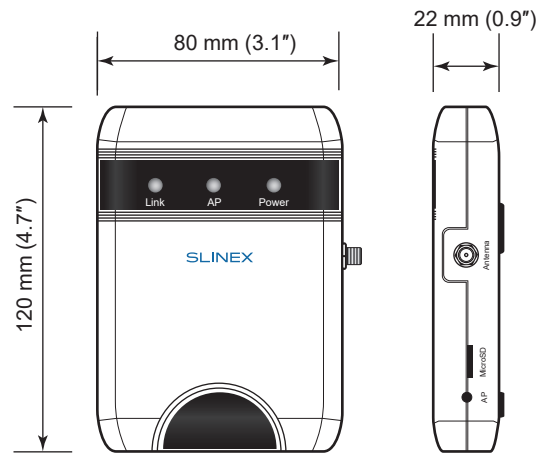
1	Video camera
2	Night infrared backlight
3	Light sensor
4	Speaker
5	Call buttons
6	Microphone

3. XR-30IP converter

3.1 Package

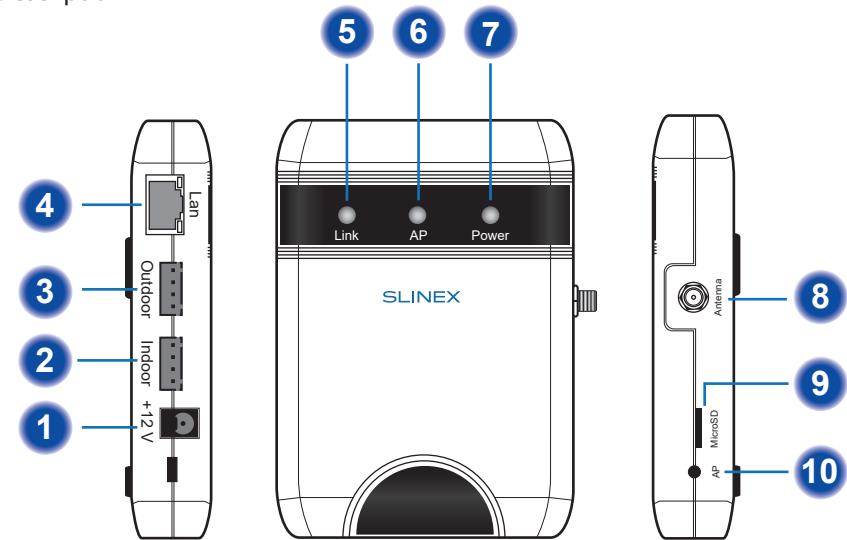
- XR-30IP converter – 1 pc.
- Power supply – 1 pc.
- Connection wires – 2 pcs.
- Mounting screws and nuts – 1 pkg.
- User manual – 1 pc.

3.2 Specification



Video system	PAL/NTSC
Network interface	Ethernet 10/100M, Wi-Fi
Memory	MicroSD card slot, up to 32GB
Standby mode power consumption	2 W
Working mode power consumption	5 W
Power	External power supply, +12 V
Mounting type	Surface mount
Size	80×120×22 mm (3.1×4.7×0.9 inch)
Working temperature	-10...+55 °C (+14...+131 °F)

3.3 Description



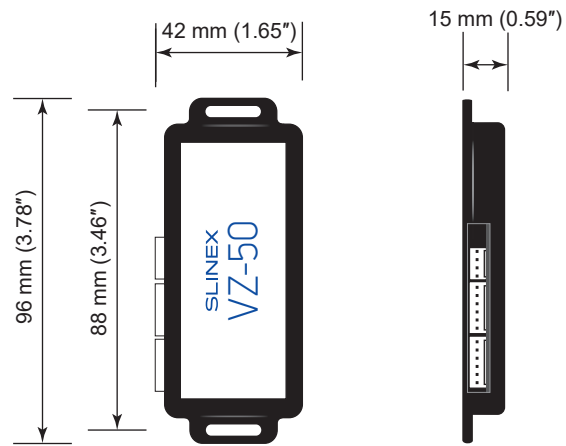
1	DC power supply input +12 V, 1 A
2	Indoor monitor plug
3	Outdoor panel plug
4	Local area network RJ-45 plug (10/100M base T Ethernet)
5	Network LED. If device is connected to wired or wireless Wi-Fi network then LED is active.
6	«Access point» mode LED. If «Access point» mode is active then LED is blinking.
7	Power LED. If the device is powered up then LED is active.
8	SMA plug for the external Wi-Fi antenna.
9	MicroSD card slot
10	«Access point» mode button. Push and hold that button until «Access point» mode LED becomes active. «Access point» mode will be activated after reboot for 10 minutes.

4. VZ-50 adapter

4.1 Package

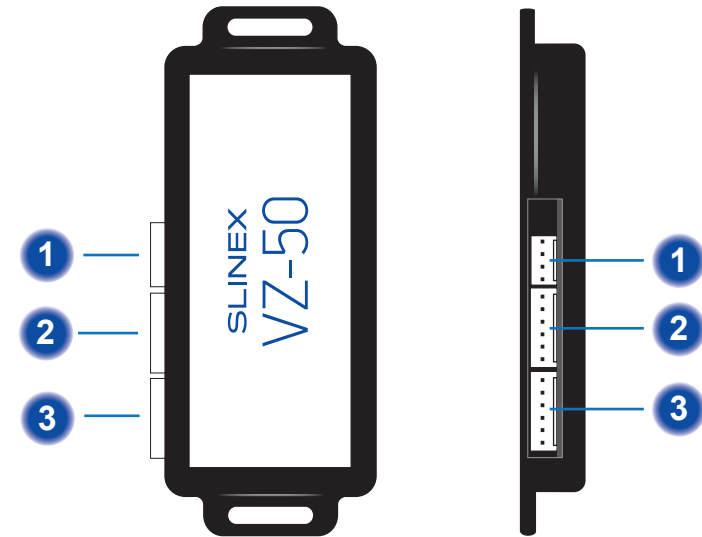
VZ-50 adapter – 1 pc.
Connection wires – 3 pcs.

4.2 Specification



Video system	PAL/NTSC
Standby mode power consumption	1 W
Working mode power consumption	3 W
Power	+13V from the monitor
Mounting type	Surface mount
Size	42×96×15mm (1.65×3.78×0.59 inch)
Working temperature	-10...+55 °C (+14...+131 °F)

4.3 Description



1	<p>XR-30IP connector</p> <p>Video</p> <p>Ground</p> <p>Audio</p> <p>Power</p>
2	<p>Zian indoor monitor connector</p> <p>Video</p> <p>Ground</p> <p>Power</p> <p>Audio</p> <p>Data</p> <p>Ground</p>
3	<p>Uma outdoor panel connector</p> <p>Video</p> <p>Ground</p> <p>Power</p> <p>Audio</p> <p>Data</p> <p>Ground</p>

5. Installation

5.1 Cable requirements

Disconnect all power cables before devices installation.

Devices can be connected with such cable types depends on the distance between indoor monitor and outdoor panel:

- a) Use the cables with such parameters:
 - distance up to 25 meters (80 ft.) use a cable with 0,22 mm² square of one wire (AWG24);
 - distance 25 to 50 meters (80 to 160 ft.) use a cable with 0,41 mm² square of one wire (AWG21);
 - distance 50 to 100 (160 to 330 ft.) meters use a cable with 0,75 mm² square of one wire (AWG18).
- b) If the distance between door monitor and door panel is between 80 and 100 meters (260 and 330 ft.) then use a cable with 0,75 mm² square of one wire (AWG18) and RG-59 or RG-6 coaxial cable for the video signal.
- c) Shielded or non-shielded twisted pair (not recommended):
 - distance up to 25 meters (80 ft.) non-shielded twisted pair can be used;
 - distance 25 to 50 meters (80 to 160 ft.) only shielded twisted pair should be used.

5.2 Schematic diagrams

Diagram 1. XR-30IP network connection.

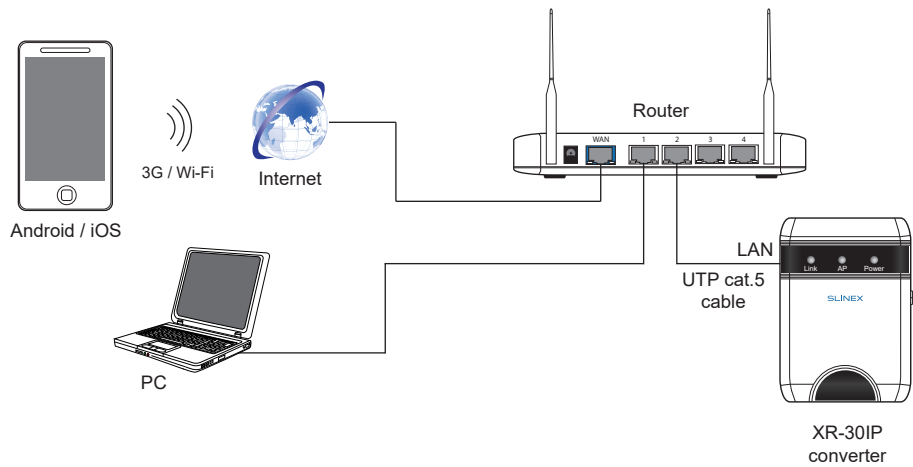
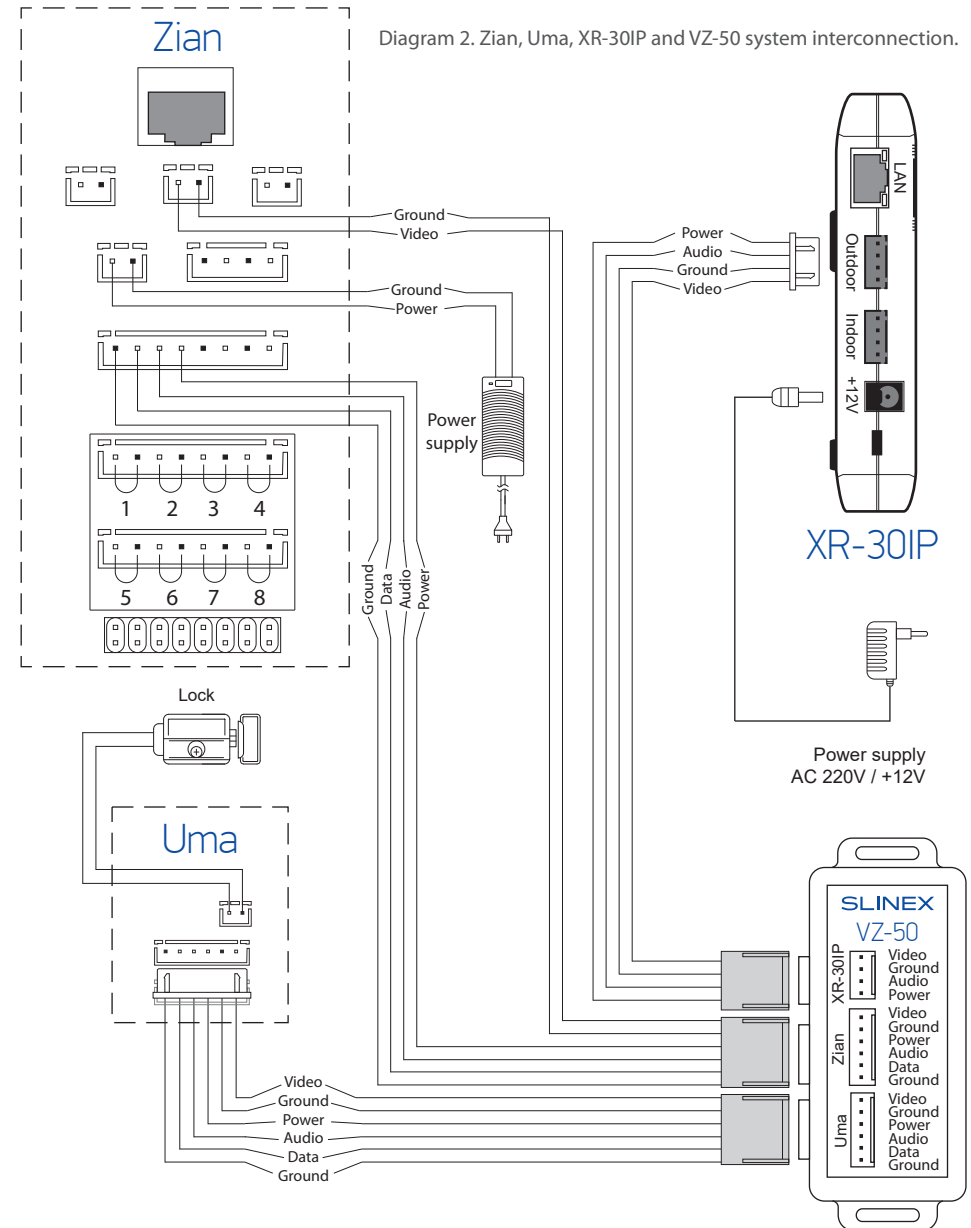


Diagram 2. Zian, Uma, XR-30IP and VZ-50 system interconnection.



6. XR-30IP software settings

Use twisted pair CAT5 or CAT6 cable to connect XR-30IP converter to the local network according to the diagram on page 11.

Wired network setup includes next steps:

- 1) Enter «GooglePlay» (for Android) or «AppStore» (for iOS) and search for «Slinex» application, then install this application on your mobile device.
- 2) Connect mobile device to the local network, which is XR-30IP connected.
- 3) Run «Slinex» application on your mobile device and press (+) icon to add a new device.
- 4) Press «Click here for connected wired/wireless device» button, then press «LAN search» button.
- 5) When new device have been found, choose its number in the list and fill in the device information:

Name: enter device name in the list

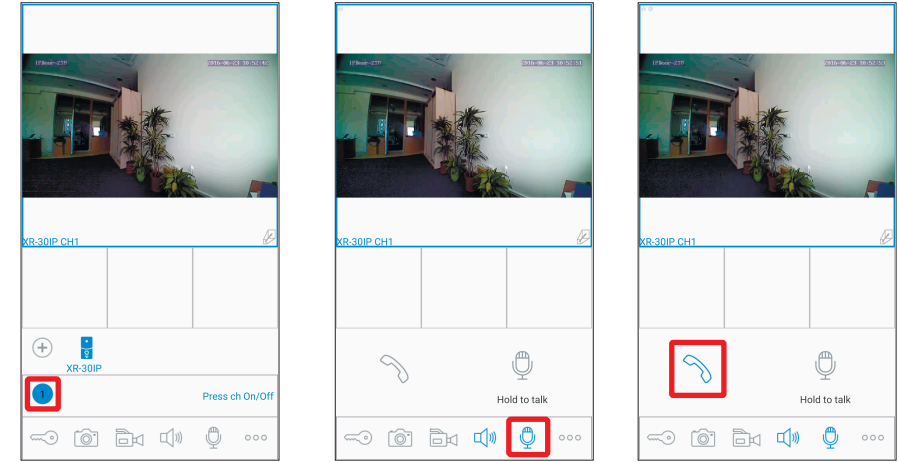
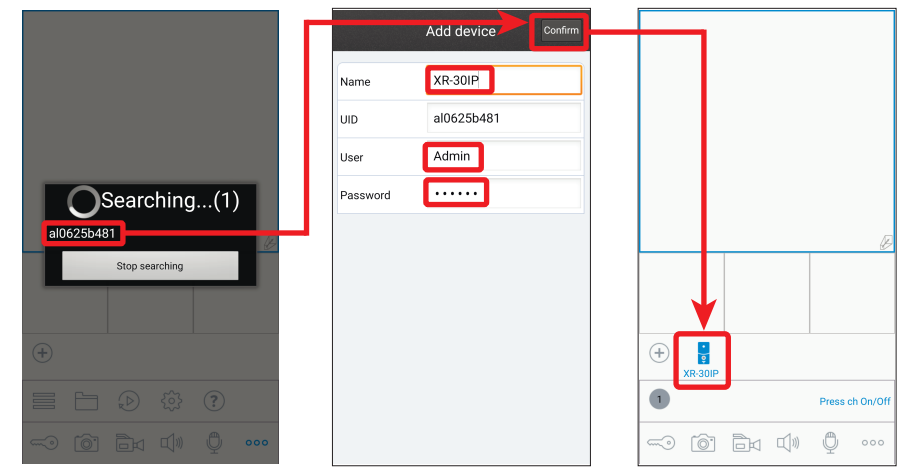
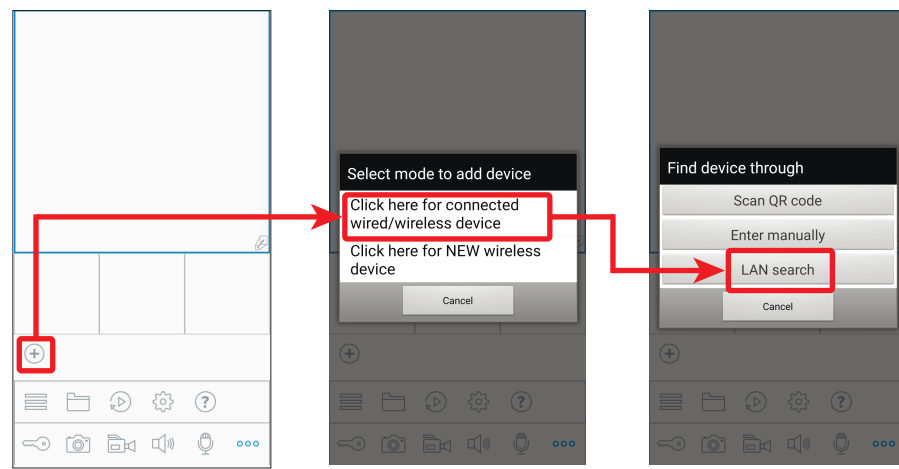
UID: unique identification number of the device

User: **Admin** (by default)

Password: **888888** (by default)

then press «Confirm» button.



- 6) Device will be added to the bar on the middle part of the screen. You can also turn alarm notification on or off by the switcher near device name in the devices list («Switch ON/OFF notification»).



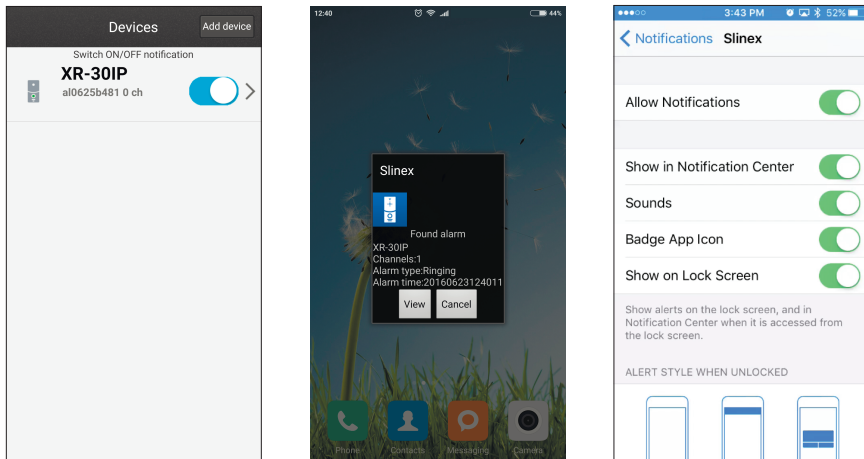
- (+) – add new device
- 🔑 – door unlock
- 📷 – snapshot
- 📹 – start/stop video recording
- 🔊 – turn on the sound from the door station
- 🔊 – press again to turn off the sound
- 🗣️ + 🗣️ – start conversation
- 🗣️ – press again to stop conversation
- ⋮ – additional settings
- ☰ – device list
- 📁 – local snapshots and video
- ▶️ – remote snapshots and video
- ⚙️ – settings
- ℹ️ – help

6.1 Notification messages

Check mobile device and XR-30IP converter both connected to the Internet.

Start «Slinex» application on the mobile device and press  button on the bar to display additional settings menu. Then press  button to enter device list. On the right side from the device name you will see the switch. If it has blue color then alarm notification is enabled. If it has gray color then alarm notification is disabled.

While alarm notification is enabled the user will receive the alarm message if someone presses the call button on the door station. Press «View» button to talk with the visitor or «Cancel» button to disable alarm message.



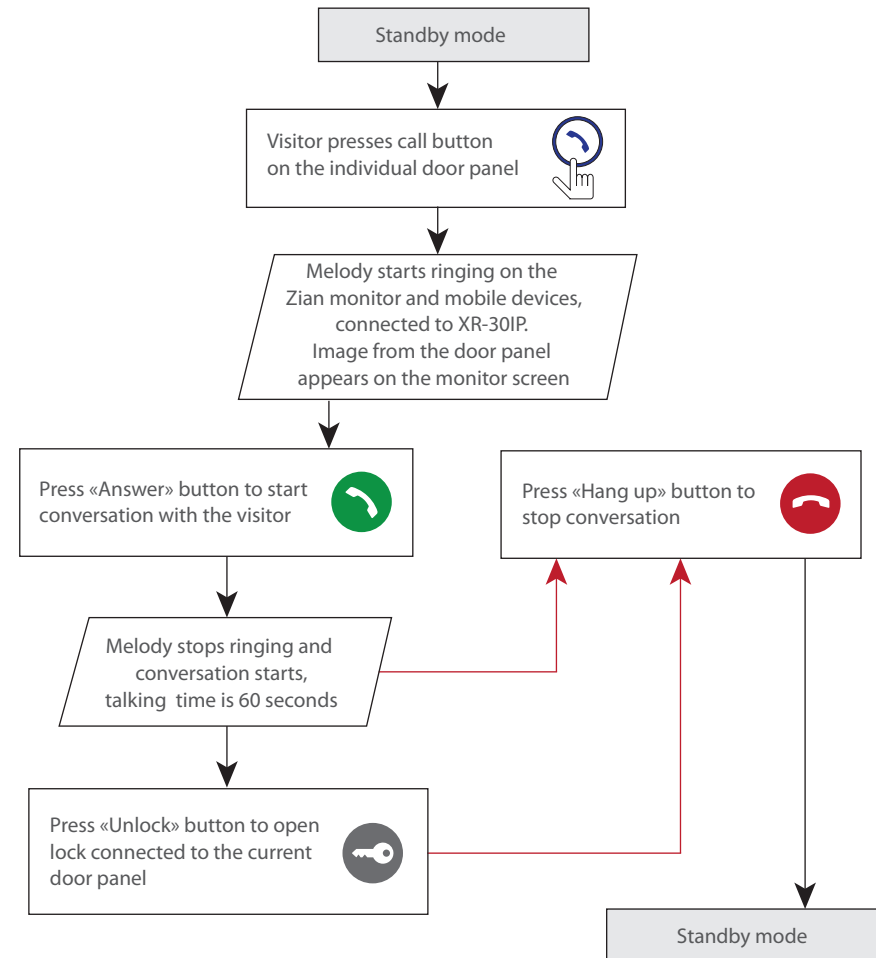
Note:

For the iOS mobile devices, go to «Settings» → «Notifications», then click «Slinex» icon and make sure that all the notification are turned on:

- Allow notifications;
- Show in Notification Center;
- Sounds;
- Badge App Icon;
- Show on Lock Screen.

7. Zian operation

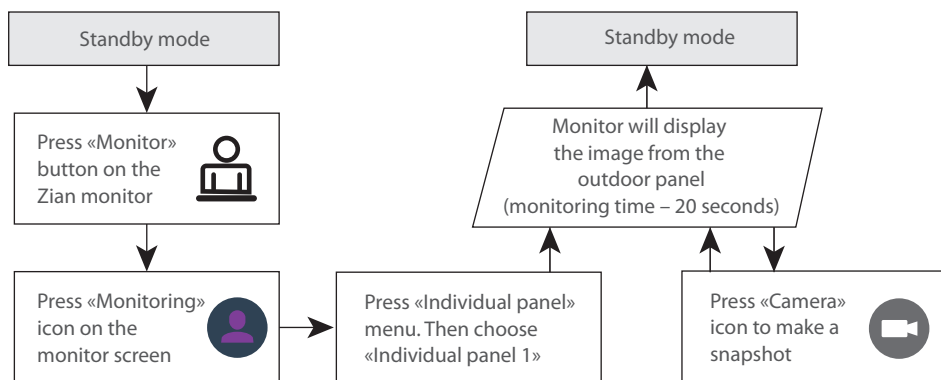
7.1 Incoming call



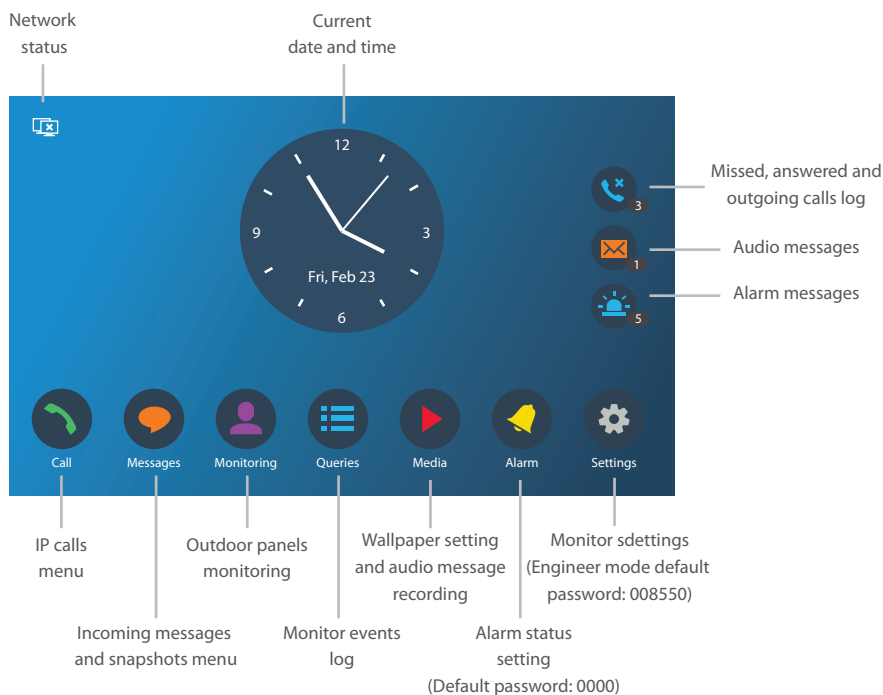
Notes:

- 1) Monitor will be automatically switched into standby mode if the user doesn't answer incoming call during 30 seconds;

7.2 Outdoor panel image view



7.3 Monitor menu



8. Limited warranty

Manufacturer guarantees product normal functioning during the warranty period if the user keeps all safety instructions described in that manual.

Warranty period is 12 months from the moment of the product purchasing (warranty period could be extended up to 24 months or more, depending on the local regulations).

Warranty period allows user to make guarantee repair in cases when normal functioning of the product was violated by the fault of manufacturer and the user haven't offend transporting, installation and working conditions.

This limited warranty does not cover any damage to the product that results from improper installation, accident, abuse, misuse, natural disaster, insufficient or excessive electrical supply, abnormal mechanical or environmental conditions, or any unauthorized disassembly, repair or modification.

Warranty void in such cases:

- the product was damaged by the fault of the customer;
- the product wasn't properly installed according recommendations from the manual;
- the sticker on the backside of the product was broken;
- the product was not used for its intended function.

This limited warranty covers only repair, replacement, refund or credit for defective products, as provided above. Manufacturer is not liable for, and does not cover under warranty, any damages or losses of any kind whatsoever resulting from loss of, damage to, or corruption of, content or data or any costs associated with determining the source of system problems or removing, servicing or installing products. This warranty excludes third party software, connected equipment or stored data. Manufacturer is therefore not liable for any losses or damage attributable to third party software, connected equipment or stored data.

In the event a product has been discontinued, manufacturer shall either repair the product, offer to replace it with a comparable product or provide a refund at the lesser of the purchase price or the product's current value.

Repaired or replacement products will continue to be covered by this limited warranty for the remainder of the original warranty term.